

333m² Office for Rent in Germasogeia, Limassol District

Luxury office for rent in a new business center, which is located in the elite Germasogeia district on Kolonakiou Street next to the Sklavenitis supermarket and has a 360° panoramic view of the sea and mountains from the 4th floor. Project features: raised floors, ceiling and lighting, air conditioning systems (Daikin), two small kitchens on each floor and several bathrooms, two new KONE elevators, reception, access control and CCTV surveillance. The project stands out for its modern design and the use of high-quality materials, luxurious finishes with European accents, the latest multimedia systems and high-speed Wi-Fi, the upper floor with special roof gardens and panoramic views of th...

Property Info

Covered Area **333**
Energy Efficiency **A**

Plot / Area Info

Additional info

Reference Number **126676**
Property type **Office**
Condition **Brand New**

Amenities

Location

Location: Germasogeia Region: **Limassol**

Price: €16 650 + VAT

VAT for this property is €2,114 or €3,164. VAT usually is 19%. If it is your first purchase of property, you can have VAT reduced to 5% for the first 150sq.m. of the property.

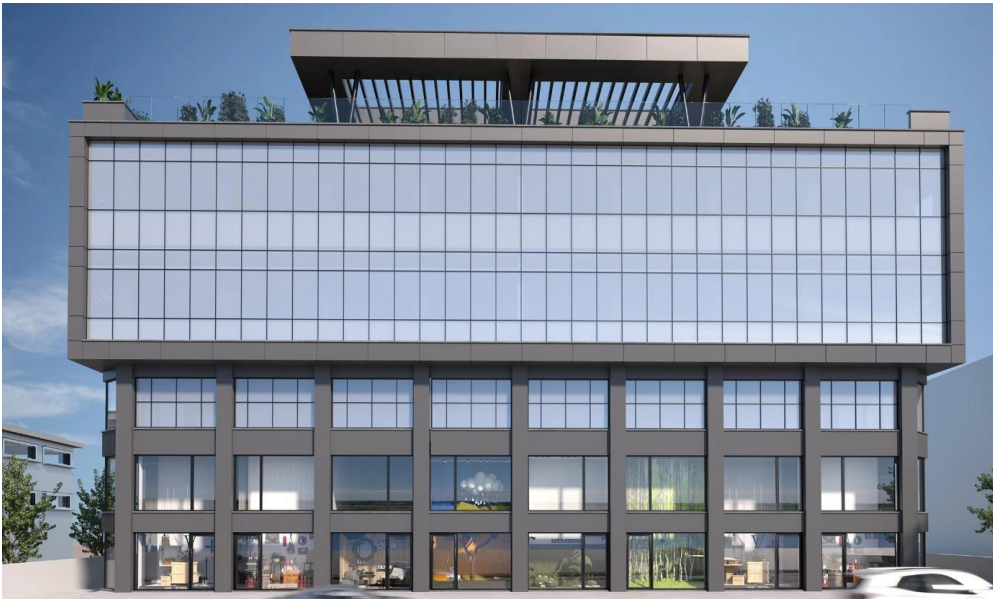
VAT	Excluded	Title transfer fee	None	Common expenses	None
		Price per SQM	€50.00/m²		

Representative: DOM Real Estate

Registration number	397	Email	info@dom.com.cy
License number	338/E	Legal name	N/A
Phone: +35796644888			

Price change history

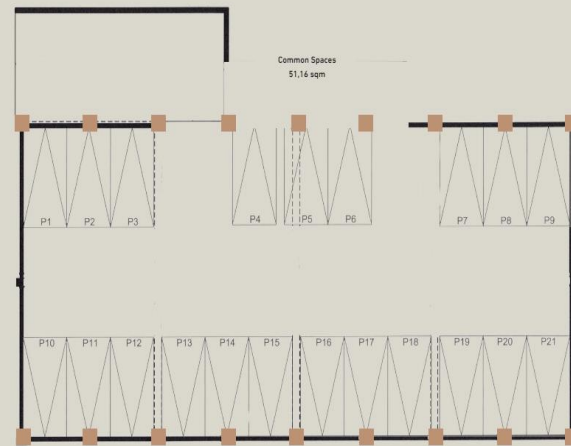
€16 650 on Feb 9, 2025



Basement

500,84 sqm

21 underground parking places



Floor 1

The first floor features two distinct offices, each designed to accommodate unique needs and functionalities. These office spaces are tailored to meet the specific requirements of their occupants, whether for individual workstations, collaborative projects, or client meetings

Floor 1 Offices

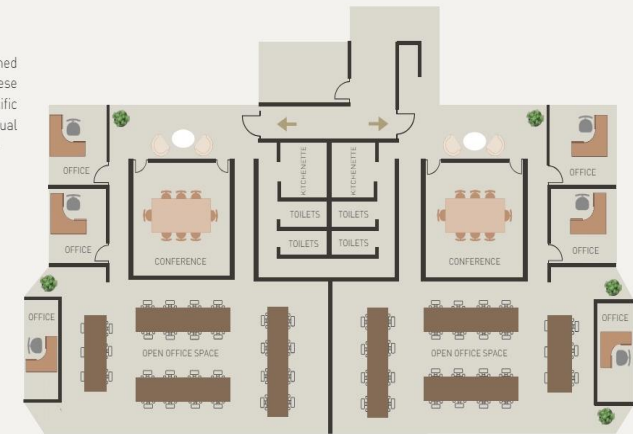
- Large open-plan working spaces
- Enclosed Offices
- Reception Area
- Kitchenette
- Toilets
- Conference Rooms

OFFICE 1

- A total of 265,96 sqm.

OFFICE 2

- A total of 239,91 sqm.



Floor 2

The second floor features two distinct offices or a whole floor open plan office, with additional room facilities.

Floor 2 Offices

- Large open-plan working spaces
- Directors' Offices
- Impressive Reception Area
- Kitchenette
- Server Room
- Toilets and Disabled WC
- Conference Rooms
- Sea Views

OFFICE 3

A total of 265,33 sqm.

OFFICE 4

A total of 269,46 sqm.

