

462m² Office for Rent in Limassol - Neapolis

Position your business at the forefront of innovation in one of Limassol’s most advanced commercial towers. The 10th floor offers a net office space of 285 m², complemented by an additional 177 m² of finished common areas, including a modern lobby, high-spec restrooms, and dedicated storage space—all located on the same floor for maximum convenience.



Designed for today’s businesses, the tower redefines the workplace experience with 12,600 m² of flexible office space, an executive business centre, and fully equipped meeting facilities. Tenants benefit from premium amenities, including landscaped green areas, a gym, and dedicated social hubs that foster wellness and pr...

Property Info		Plot / Area Info		Additional info		
Covered Area	462	Parking	Covered, Yes	Reference Number	7912	
Floor Number	10			Property type	Office	
Total Number of Floors	25			Condition	Under Construction	
Amenities		Location				
• Parking		Location: Limassol - Neapolis				
		Region: Limassol				
		Coordinates: 34.687419127325 / 33.050715857427				

Price: €20 500 + VAT

VAT for this property is **€2,963** or **€3,895**. VAT usually is 19%. If it is your first purchase of property, you can have VAT reduced to 5% for the first 150sq.m. of the property.

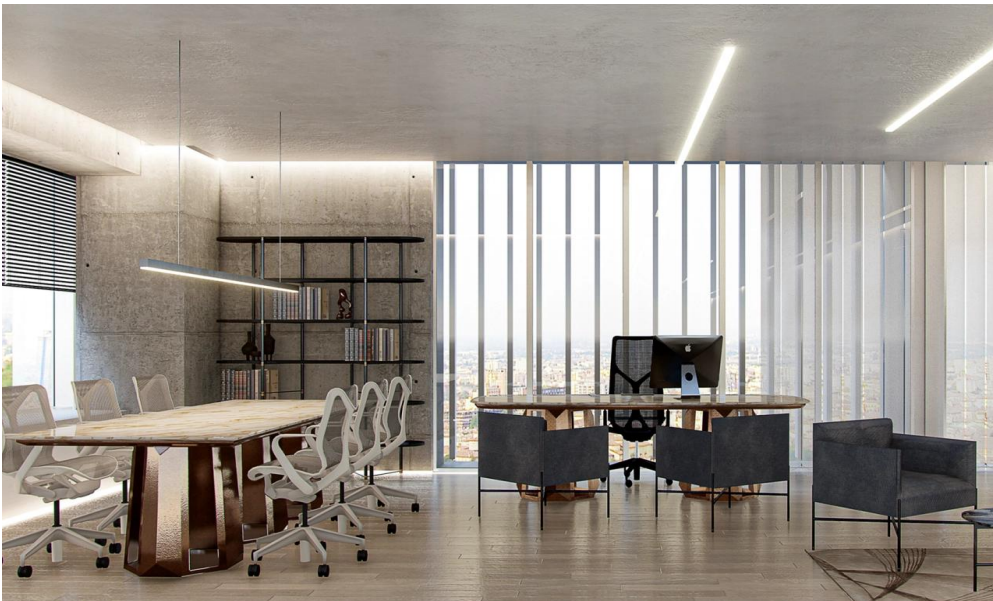
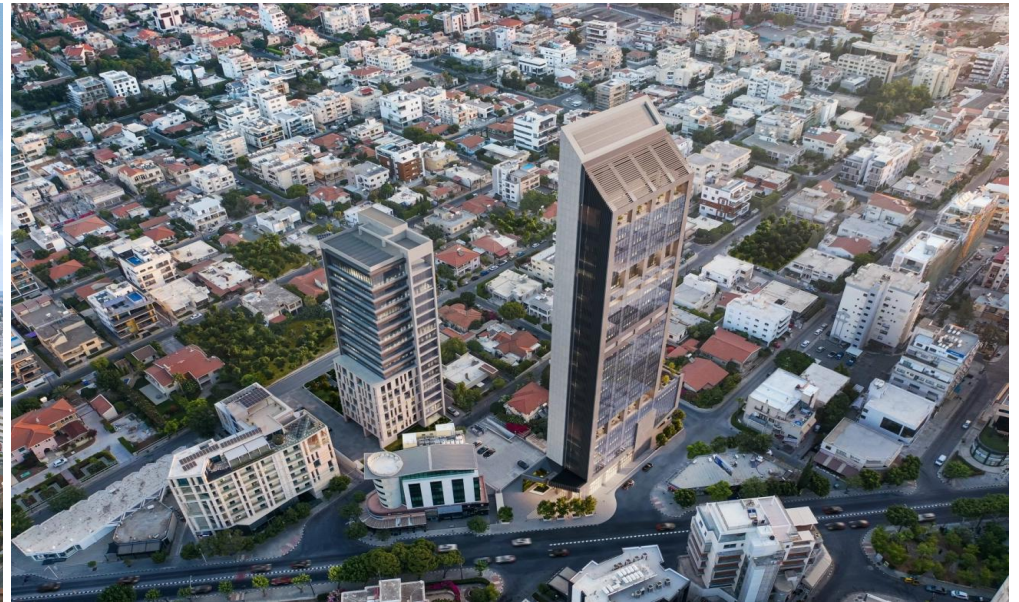
VAT	Excluded	Title transfer fee	None	Common expenses	None
		Price per SQM	€44.00/m²		

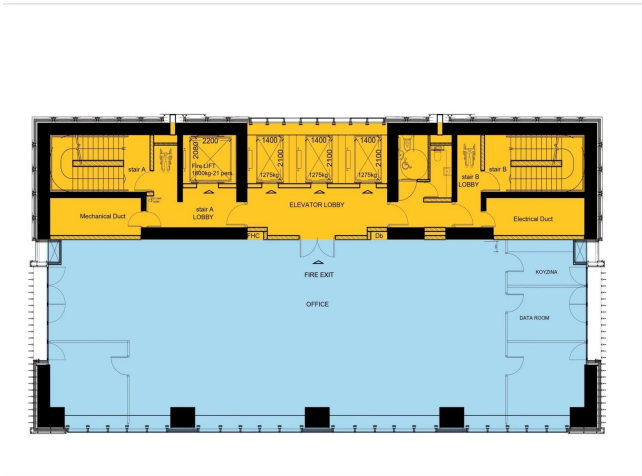
Representative: RealDeal Estates

Registration number	1311	Email	info@realdeal.cy
License number	347/E	Legal name	Esperia Estates (Limassol-Paphos) Limited
Phone: +35725255505, +35794001333			

Price change history

€20 500 on Jul 22, 2025





10th OFFICE FL. PLAN	
OFFICE- NET AREA	285 sq.m.
COMMONS AREA	177 sq.m.
GROSS AREA	= 462 sq.m.