

## 389m<sup>2</sup> Office for Rent in Limassol - Agios Athanasios

For rent a room for a store (0 floor + mezzanine) in a luxury business center. The commercial complex is located on Spyrou Kyprianou Avenue, one of the busiest streets in the prestigious area of Limassol city center. There are many office buildings with representatives of various financial, legal, insurance and IT companies. Indoor covered area of the lower level: 260m<sup>2</sup> plus mezzanine: 129m<sup>2</sup>. Covered parking for 7 cars. Technical specification: Earthquake-resistant natural stone floor in common areas. The floors and walls in the toilet are made of ceramic tiles. High-standard plumbing from well-known brands. Raised floor for the street with a ceramic countertop. High-quality kitchen cabine...

### Property Info

Covered Area **389**

Energy Efficiency **A**

### Plot / Area Info

### Additional info

Reference Number **168336**

Property type **Office**

Condition **Brand New**

### Amenities

### Location

**Location:** Limassol - Agios Athanasios Region: **Limassol**

Price: €21 700 + VAT

VAT for this property is €2,952 or €4,123. VAT usually is 19%. If it is your first purchase of property, you can have VAT reduced to 5% for the first 150sq.m. of the property.

VAT	Excluded	Title transfer fee	None	Common expenses	None
		Price per SQM	€56.00/m²		

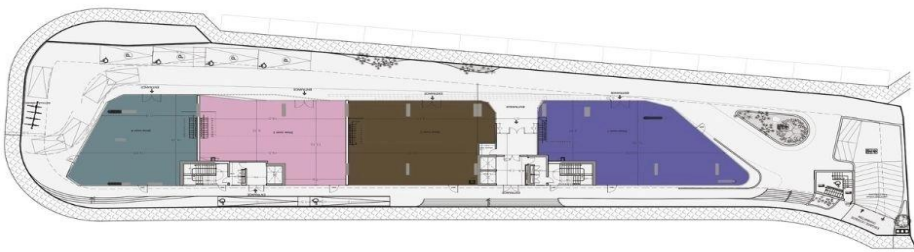
Representative: DOM Real Estate

Registration number	397	Email	info@dom.com.cy
License number	338/E	Legal name	N/A
Phone: +35796644888			

Price change history

€21 700 on Jul 26, 2025

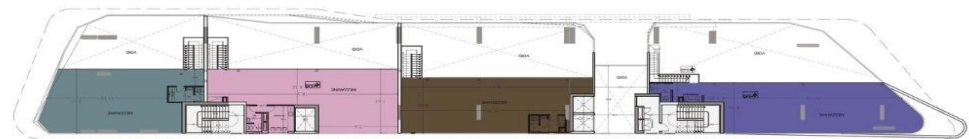




Ground Floor

Covered inside area, m <sup>2</sup>	
shop 1	265,0
shop 2	233,0
shop 3	212,0
shop 4	189,0
Total covered area, m <sup>2</sup>	
shop 1	393,0
shop 2	349,0
shop 3	318,0
shop 4	300,0

20



MEZZANINE

Covered veranda / mezzanine, m <sup>2</sup>	
shop 1	128,0
shop 2	116,0
shop 3	106,0
shop 4	111,0
Covered Parking Place	
shop 1	7
shop 2	6
shop 3	5
shop 4	5