

150m² Office for Rent in Paphos - Agios Theodoros

Rent a new office in the historical center of Paphos. The building is located just a few steps from the main square of the city and the cozy city park, surrounded by key government and business institutions, making it an ideal choice for doing business. The office meets all modern requirements for commercial real estate. The building is fully equipped with engineering systems: distribution panels, technical lighting, an electrical conditioning system are installed, and cable trays are laid for the convenience of placing IT equipment. Mechanical systems include central air conditioning, ventilation, heating and a rainwater drainage system, which ensures comfortable operation throughout the ...

Property Info

Covered Area **150**
Energy Efficiency **A**

Plot / Area Info

Additional info

Reference Number **170224**
Property type **Office**
Condition **Brand New**

Amenities

Location

Location: Paphos - Agios Theodoros Region: **Paphos**

Price: €6 000 + VAT

VAT for this property is **€300** or **€1,140**. VAT usually is 19%. If it is your first purchase of property, you can have VAT reduced to 5% for the first 150sq.m. of the property.

VAT	Excluded	Title transfer fee	None	Common expenses	None
		Price per SQM	€40.00/m²		

Representative: DOM Real Estate

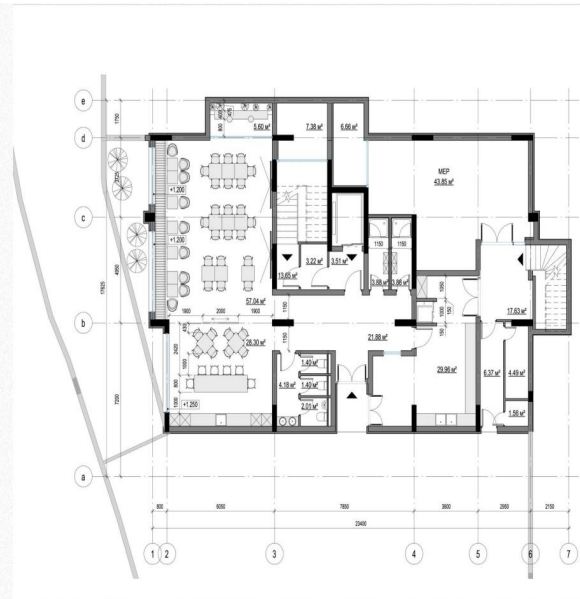
Registration number	397	Email	info@dom.com.cy
License number	338/E	Legal name	N/A
Phone: + 35796644888			

Price change history

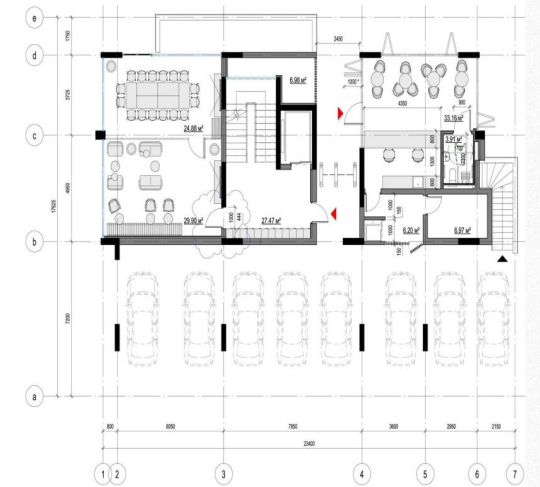
€6 000 on Aug 2, 2025



Roof floor
Sixth floor
Fifth floor
Fourth floor
Third floor
Second floor
First floor : office 4 tenants
First floor : office 2 tenants
First floor: office 1 tenant/sharing
Ground floor
Floor basement



Roof floor
Sixth floor
Fifth floor
Fourth floor
Third floor
Second floor
First floor : office 4 tenants
First floor : office 2 tenants
First floor: office 1 tenant/sharing
Ground floor
Floor basement



Roof floor
Sixth floor
Fifth floor
Fourth floor
Third floor
Second floor
First floor : office 4 tenants
First floor : office 2 tenants
First floor: office 1 tenant/sharing
Ground floor
Floor basement

