

## 180m<sup>2</sup> Office for Rent in Limassol District

This prime location alongside the main highway and adjacent to the Mesa Geitonia intersection was the obvious choice for a building with such visual presence. Accessibility is easy for both employees and clients from all Limassol suburbs as well as from Nicosia Larnaca and Paphos. All commercial government and municipal resources are within easy reach. And for convenience many banking shopping and dining establishments are close by. Thoughtfully designed as a high performance office building this Business Tower delivers enhanced opportunities for high levels of employee satisfaction greater productivity and improved mental and physical well being. To accomplish these objectives it benefit...

### Property Info

Covered Area	<b>180</b>
Floor Number	<b>1</b>
Total Number of Floors	<b>6</b>
Energy Efficiency	<b>A</b>

### Plot / Area Info

### Additional info

Reference Number **VL49775**  
Property type **Office**

### Amenities

### Location

Region: **Limassol**

## Price: €8 000 + VAT

VAT for this property is **€587** or **€1,520**. VAT usually is 19%. If it is your first purchase of property, you can have VAT reduced to 5% for the first 150sq.m. of the property.

VAT	<b>Excluded</b>	Title transfer fee	<b>~€120.00</b>	Common expenses	<b>None</b>
		Price per SQM	<b>€44.00/m²</b>		

## Representative: Nicolaou Estates

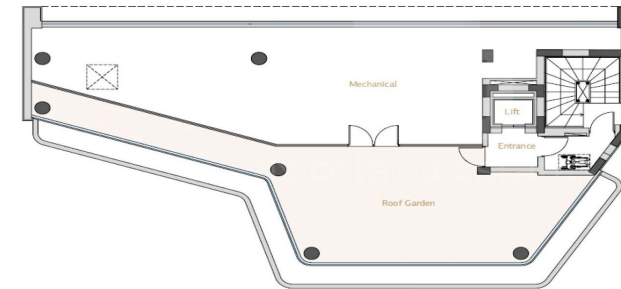
Registration number	<b>693</b>	Email	<b>pnicolaou@nicolaouestates.com</b>
License number	<b>365/E</b>	Legal name	<b>Nicolaou Estates LTD</b>
Phone:			

## Price change history

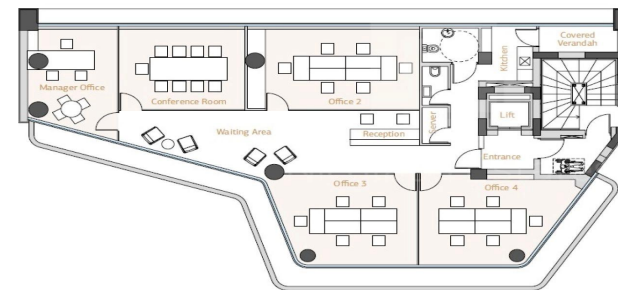
€8 000 on Aug 26, 2025



ROOF  
GARDEN



OFFICE  
FLOORS



## GROUND FLOOR

