

4241m² Office for Rent in Limassol - Mesa Geitonia

We offer for rent a premium office building in the dynamic municipality of Mesa Geitonia, Limassol. This is a modern business center, which includes four floors of office space with the possibility of individual space customization. There is a double-height lobby on the ground floor, and there are 19 underground parking spaces in the basement. There is a garden on the roof with a place for a restaurant or warehouse. The building is also equipped with a fully equipped gym and recreation areas for employees on the mezzanine. Inspiring and flexible workspaces. The project provides an excellent location, just minutes from the seafront, marina and Limassol central business district, surrounded...

Property Info

Covered Area **4241**

Energy Efficiency **A**

Plot / Area Info

Additional info

Reference Number **175704**

Property type **Office**

Condition **Brand New**

Amenities

Location

Location: Limassol - Mesa Geitonia Region: **Limassol**

Price: €212 050 + VAT

VAT for this property is **€39,240** or **€40,290**. VAT usually is 19%. If it is your first purchase of property, you can have VAT reduced to 5% for the first 150sq.m. of the property.

VAT	Excluded	Title transfer fee	None	Common expenses	None
		Price per SQM	€50.00/m²		

Representative: DOM Real Estate

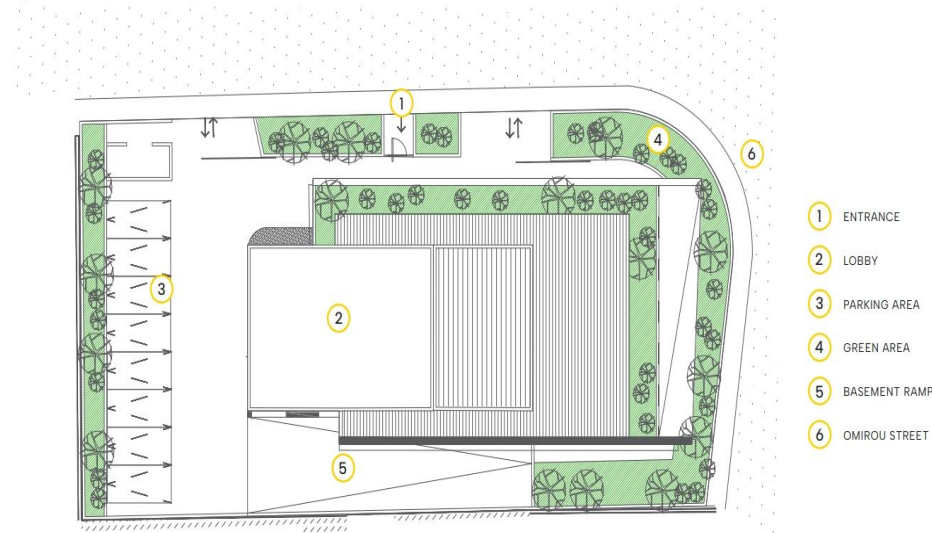
Registration number	397	Email	info@dom.com.cy
License number	338/E	Legal name	N/A
Phone: + 35796644888			

Price change history

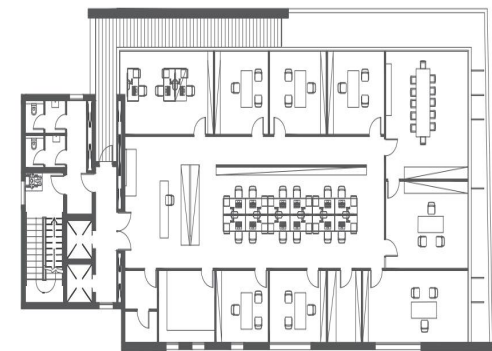
€212 050 on Sep 17, 2025



MASTERPLAN



TYPICAL FLOOR PLAN



Total Interior Area 370 sqm

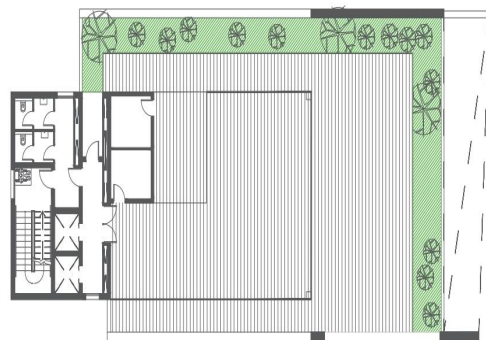
Covered Veranda 28-42 sqm*

Total Covered Area 398-412 sqm*

* Depending on the floor

* Optional design layout, flexible for custom-made to the company's operation needs.

ROOF TOP



Total Interior Area 81 sqm

Covered Veranda 57 sqm

Uncovered Veranda & Garden 138 sqm

Total Covered Area 222 sqm