

## 2 Bedroom Apartment for Rent in Limassol - Panthea

One-bedroom apartment of 99 m2 for rent in Panthea, Limassol. The apartment includes a spacious living room combined with a modern open—plan kitchen, two bedrooms and two bathrooms, one of which is en-suite in the master bedroom. The second bedroom has its own balcony. The apartment is fully furnished and equipped with modern appliances, and a spacious covered veranda of 18 m2 serves as an extension of the living room. The location is a ten-minute drive from the city center and provides convenient access to Limassol’s infrastructure.

### Property Info

Covered Area	<b>99</b>
Furnishing	<b>Furnished</b>
Energy Efficiency	<b>A</b>
Air Conditioning	<b>No</b>

### Plot / Area Info

Parking	<b>Covered, Yes</b>
---------	---------------------

### Additional info

Reference Number	<b>180598</b>
Property type	<b>Apartment</b>
Condition	<b>Brand New</b>
Bathrooms	<b>2</b>

### Amenities

#### Location

**Location:** Limassol - Panthea Region: **Limassol**

## Price: €1 800 + VAT

VAT for this property is **€90** or **€342**. VAT usually is 19%. If it is your first purchase of property, you can have VAT reduced to 5% for the first 150sq.m. of the property.

VAT	<b>Excluded</b>	Title transfer fee	<b>None</b>	Common expenses	<b>None</b>
		Price per SQM	<b>€18.00/m<sup>2</sup></b>		

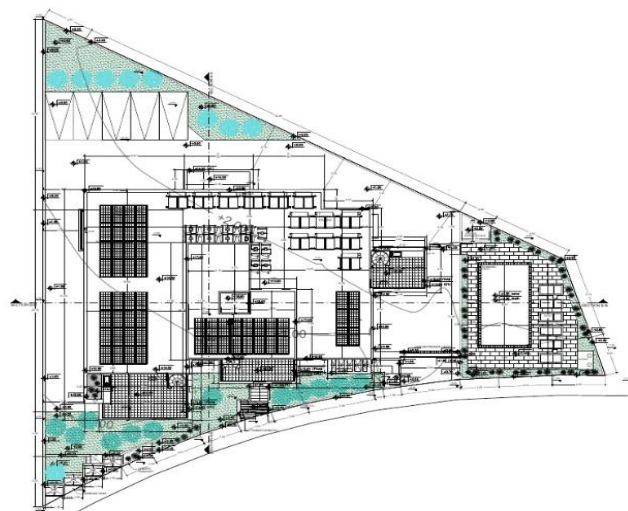
## Representative: DOM Real Estate

Registration number	<b>397</b>	Email	<b>info@dom.com.cy</b>
License number	<b>338/E</b>	Legal name	<b>N/A</b>
Phone: + <b>35796644888</b>			

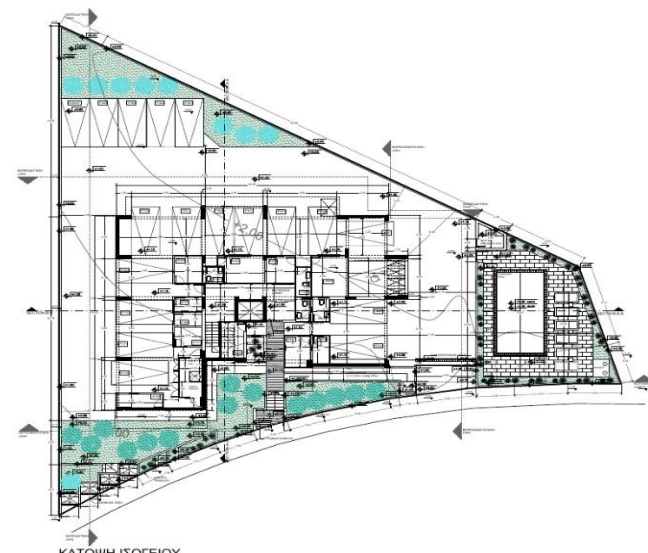
## Price change history

€1 800 on Oct 10, 2025

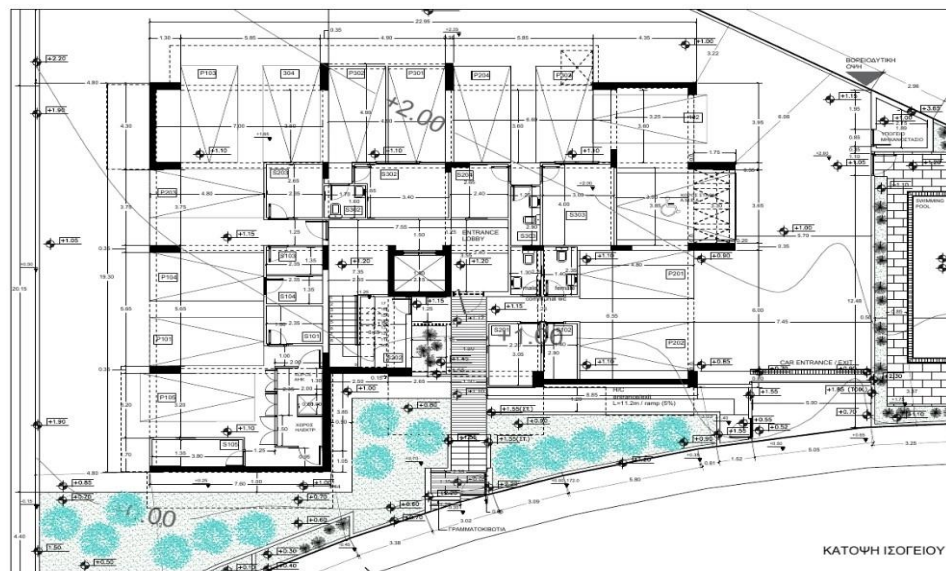




ΧΩΡΟΤΑΞΙΚΟ ΣΧΕΔΙΟ



ΚΑΤΟΨΗ ΙΣΟΓΕΙΟΥ



ΚΑΤΟΨΗ ΙΣΟΓΕΙΟΥ