

885m² Office for Rent in Limassol - Agios Athanasios

Experience a premium open-plan workspace in one of Cyprus’s most prestigious and accessible business locations. This modern commercial building stands out for its expansive floor plate — the only one of its kind in the country — designed to optimise productivity, comfort, and efficiency.



Key Features:

- Half-floor open-plan layout ideal for tailor-made office configurations
- Exceptional parking capacity — 365 spaces (3x more than required by law)
- Highly efficient design with no wasted corridor areas
- Multi-functional veranda perfect for meetings, events, or breakouts
- On-demand meeting rooms available within the building

...

Property Info

Covered Area	885
Floor Number	4
Total Number of Floors	7
Energy Efficiency	A

Plot / Area Info

Additional info

Reference Number	10577
Property type	Office
Condition	Under Construction

Amenities

- Elevator

Location

Location: Limassol - Agios Athanasios Region: **Limassol**
Coordinates: **34.707716036242 / 33.06203485947**

Price: €53 130 + VAT

VAT for this property is **€8,834** or **€10,095**. VAT usually is 19%. If it is your first purchase of property, you can have VAT reduced to 5% for the first 150sq.m. of the property.

VAT	Excluded	Title transfer fee	None	Common expenses	None
		Price per SQM	€60.00/m²		

Representative: RealDeal Estates

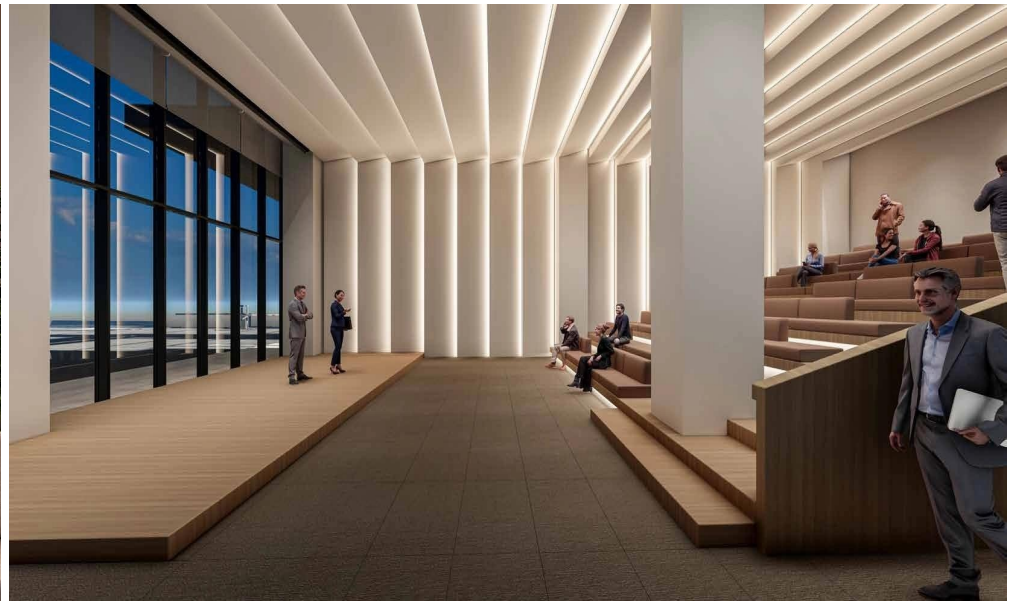
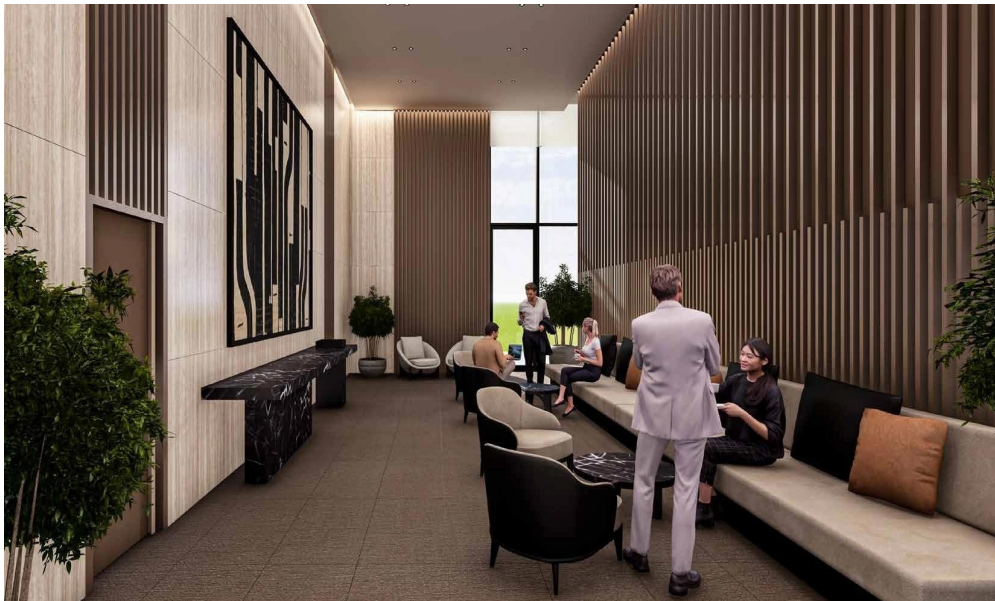
Registration number	1311	Email	info@realdeal.cy
License number	347/E	Legal name	Esperia Estates (Limassol-Paphos) Limited
Phone:	+35725255505, +35794001333		

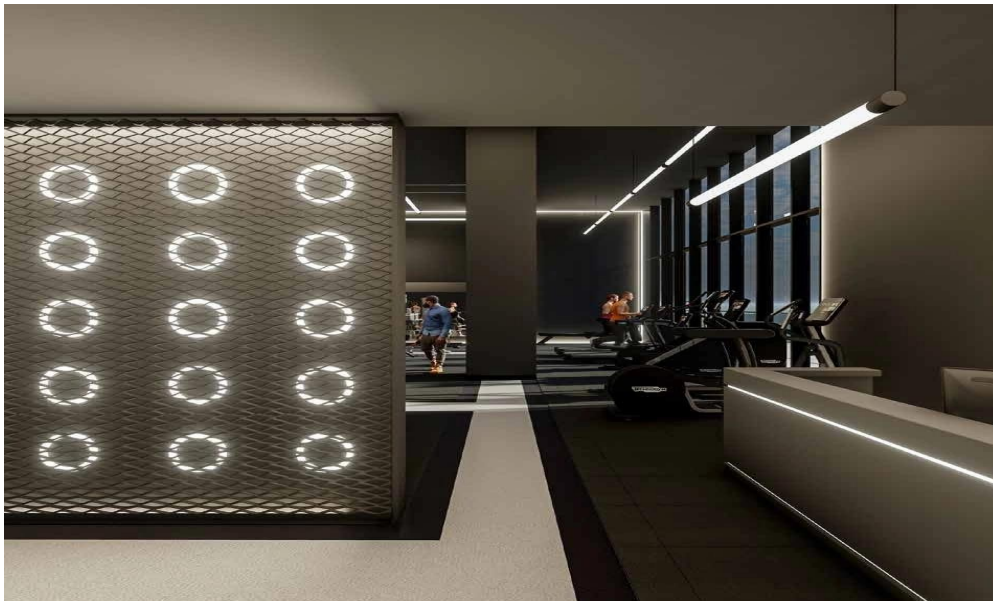
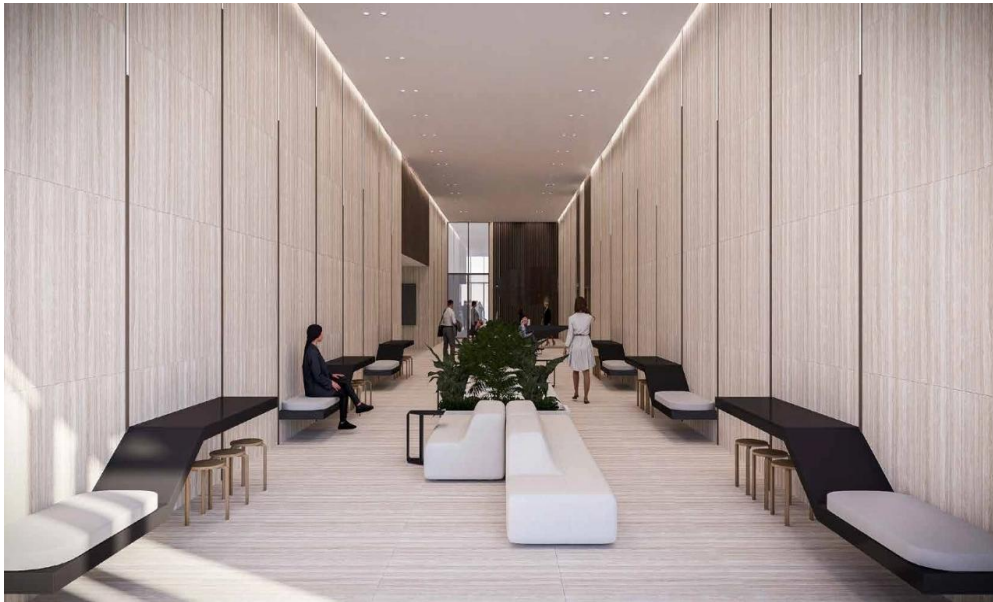
Price change history

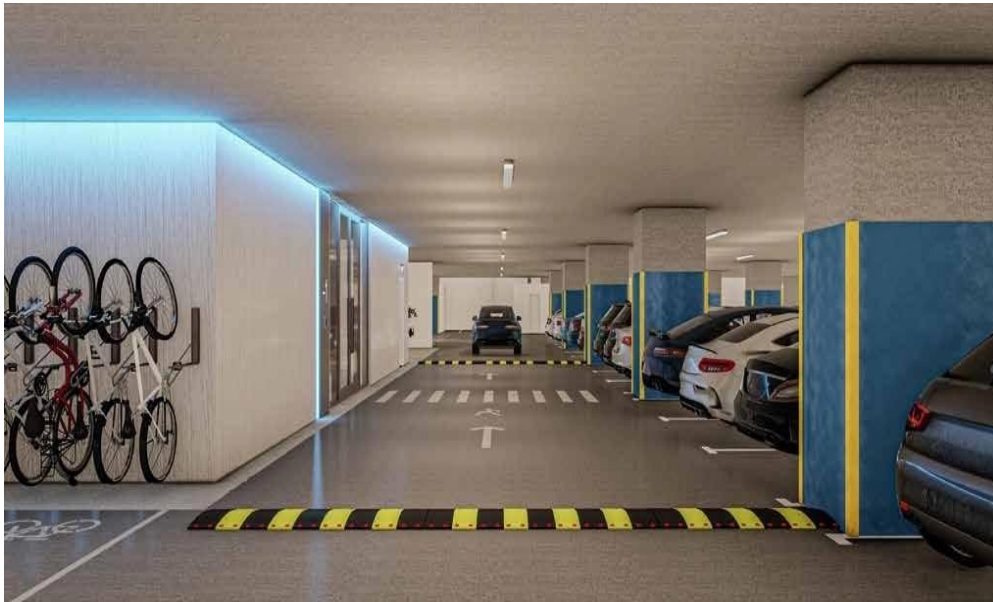
€53 130 on Nov 28, 2025









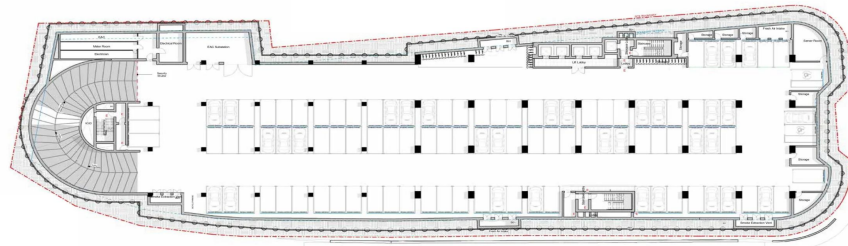


Typical Basement Parking

Ground Floor



- 01 Reception
- 02 Conference Centre
- 03 Auditorium
- 04 Executive Room
- 05 Meeting Rooms
- 06 Boardroom
- 07 Cafeteria
- 08 Gym
- 09 Offices



- 01 Reception
- 02 Conference Centre
- 03 Auditorium
- 04 Executive Room
- 05 Meeting Rooms
- 06 Boardroom
- 07 Cafeteria
- 08 Gym
- 09 Offices

+ 0 0

