


## 2792m<sup>2</sup> Building for Rent in Limassol - Mesa Geitonia

Building with Class A Offices for Rent in Prime Location of Mesa Geitonia area, Limassol. Located at a thriving business hub, close to all amenities such as schools, major supermarket, banks, pharmacies etc. Only few minutes away from the center of Limassol with easy access to highway. 

Entire commercial building for rent in Mesa Geitonia area, Limassol. The building comprises six floors with a total gross area of 2.792 sq.m and provides 23 covered parking spaces.

The basement level accommodates parking and storage areas.

The ground floor features a high-quality common lobby with a reception area, toilets, two storage rooms, and additional parking spaces.

Floor...

### Property Info

Covered Area  
Air Conditioning

**2792**  
**All rooms, Yes**

### Plot / Area Info

Parking

**Covered, Yes**

### Additional info

Reference Number  
Property type  
Condition  
View

**54608**  
**Building**  
**Brand New**  
**City view**

### Amenities

- Elevator

### Location

**Location:** Limassol - Mesa Geitonia  
Coordinates: **34.695641719034 / 33.030907814416**

Region: **Limassol**

## Price: €79 758 + VAT

VAT for this property is **€14,554** or **€15,154**. VAT usually is 19%. If it is your first purchase of property, you can have VAT reduced to 5% for the first 150sq.m. of the property.

VAT	<b>Excluded</b>	Title transfer fee	<b>None</b>	Common expenses	<b>None</b>
		Price per SQM	<b>€29.00/m<sup>2</sup></b>		

## Representative: Kalogirou Real Estate

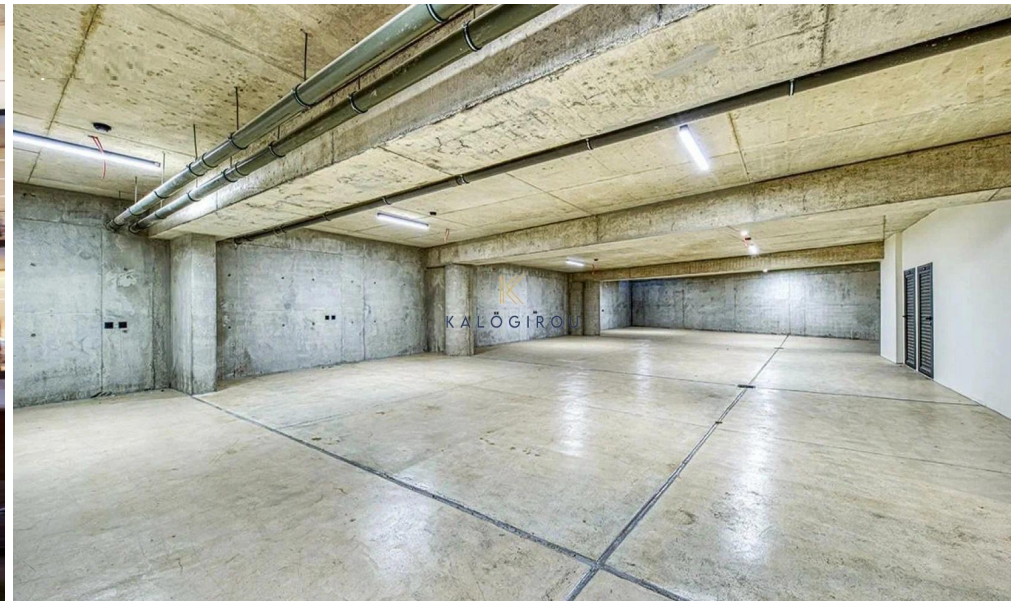
Registration number	<b>1104</b>	Email	<b>info@kalogirourealestate.com</b>
License number	<b>569/E</b>	Legal name	<b>N/A</b>
Phone: +35724003723			

## Price change history

€79 758 on Jan 17, 2026







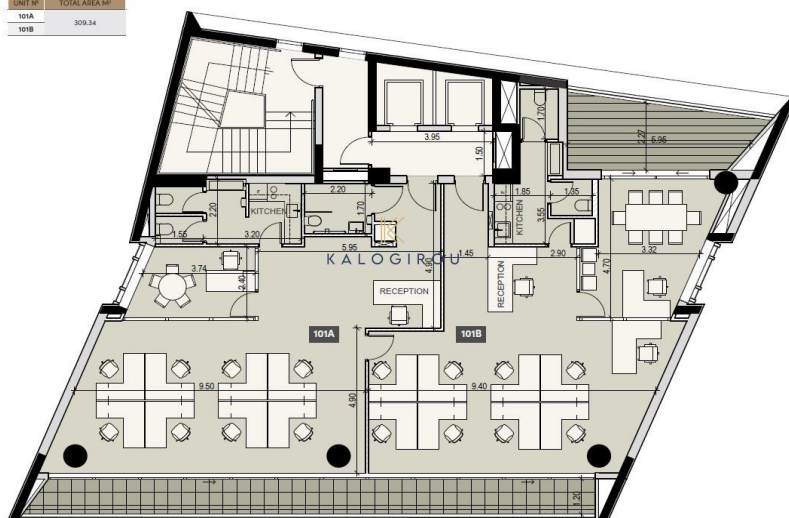


ground floor



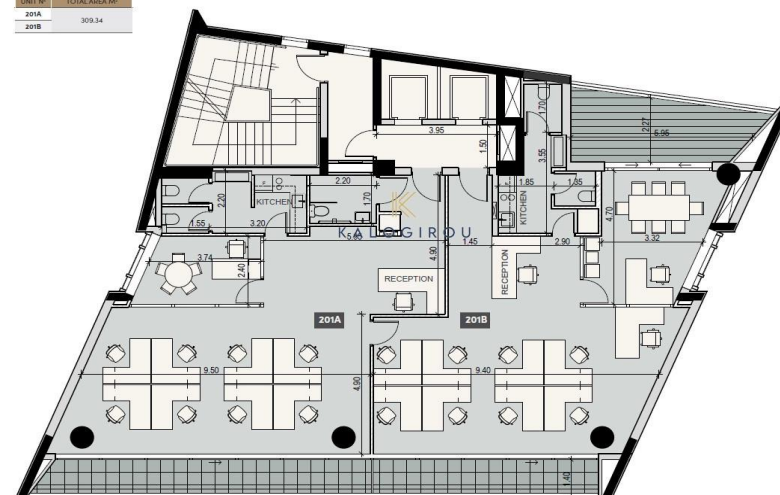
floor 1

UNIT Nº	TOTAL AREA M²
101A	309.34
101B	



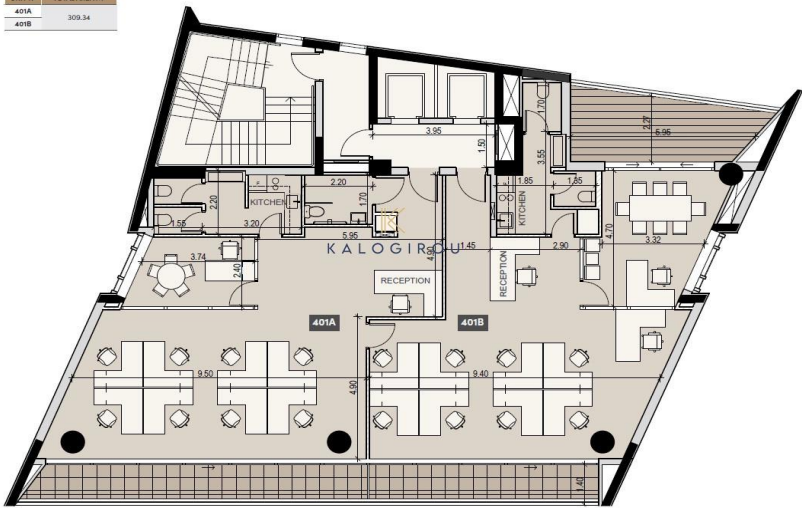
floor 2

UNIT Nº	TOTAL AREA M²
201A	309.34
201B	



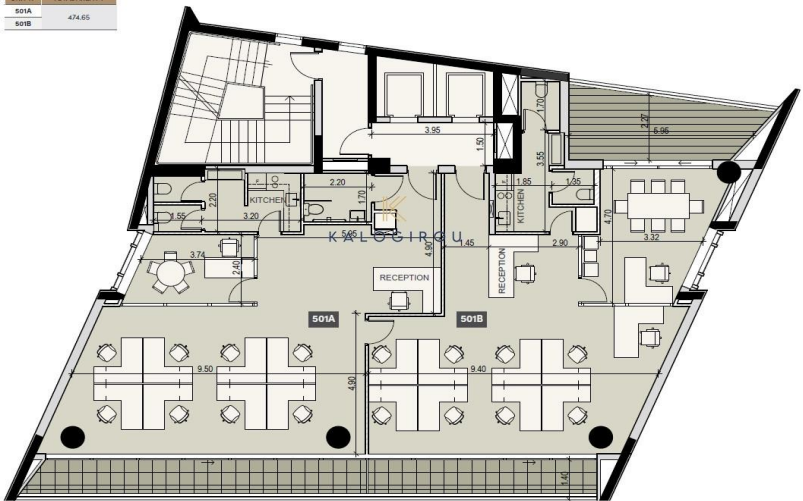
floor 4

UNIT N°	TOTAL AREA M²
401A	309.34
401B	



floor 5

UNIT N°	TOTAL AREA M²
501A	474.65
501B	



floor 6

