


## 494m<sup>2</sup> Office for Rent in Limassol - Mesa Geitonia

Two Floors of Office Spaces for Rent in Central area of Mesa Geitonia, Limassol. Located at a thriving business hub, close to all amenities such as schools, major supermarket, banks, pharmacies etc. Only few minutes away from the center of Limassol with easy access to highway. 

Available for rent are two floors with four office units in total. Each floor comprised of two office units. Each unit consists of a reception area, open-plan workspace, enclosed office/conference room, kitchen, toilets, and a covered veranda. The total gross leasable area is 494 sqm.

Additionally, the offices have the right of use of 8 parking spaces and two storages.

The offices are part of a ...

### Property Info

Covered Area **494**  
 Air Conditioning **All rooms, Yes**

### Plot / Area Info

Parking **Covered, Yes**

### Additional info

Reference Number **54609**  
 Property type **Office**  
 Condition **Brand New**  
 View **City view**

### Amenities

- Elevator

### Location

**Location:** Limassol - Mesa Geitonia      Region: **Limassol**  
 Coordinates: **34.695641719034 / 33.030907814416**

## Price: €29 376 + VAT

VAT for this property is **€4,333** or **€5,581**. VAT usually is 19%. If it is your first purchase of property, you can have VAT reduced to 5% for the first 150sq.m. of the property.

VAT	<b>Excluded</b>	Title transfer fee	<b>None</b>	Common expenses	<b>None</b>
		Price per SQM	<b>€59.00/m<sup>2</sup></b>		

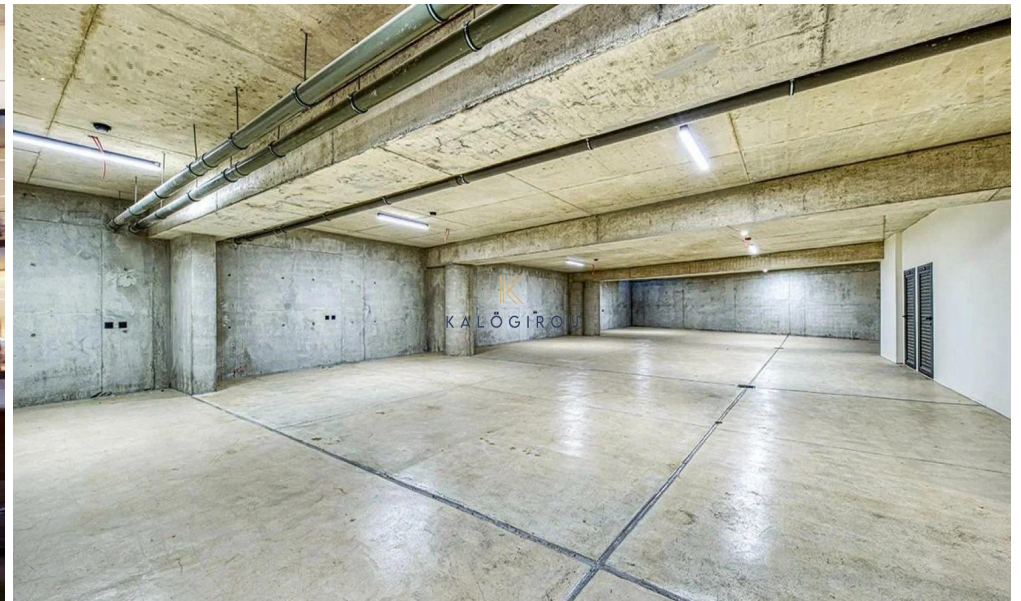
## Representative: Kalogirou Real Estate

Registration number	<b>1104</b>	Email	<b>info@kalogirourealestate.com</b>
License number	<b>569/E</b>	Legal name	<b>N/A</b>
Phone: <b>+35724003723</b>			

## Price change history

€29 376 on Jan 17, 2026





basement

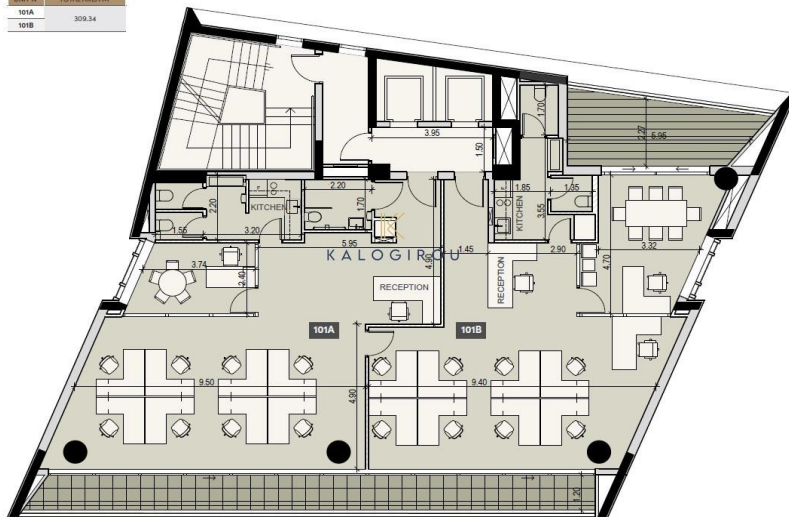


ground floor



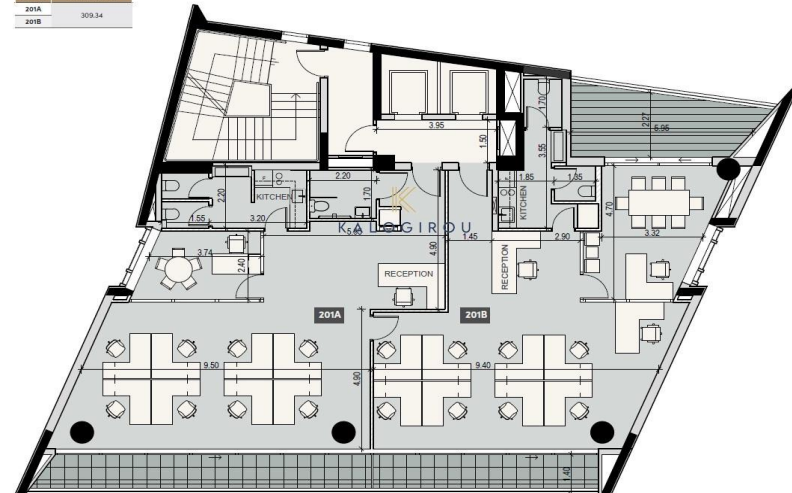
floor 1

UNIT N°	TOTAL AREA M <sup>2</sup>
101A	309.34
101B	



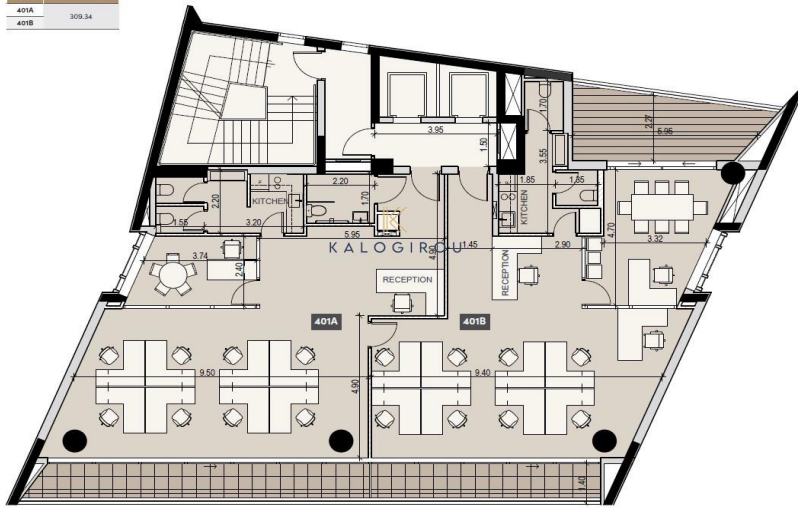
floor 2

UNIT N°	TOTAL AREA M <sup>2</sup>
201A	309.34
201B	



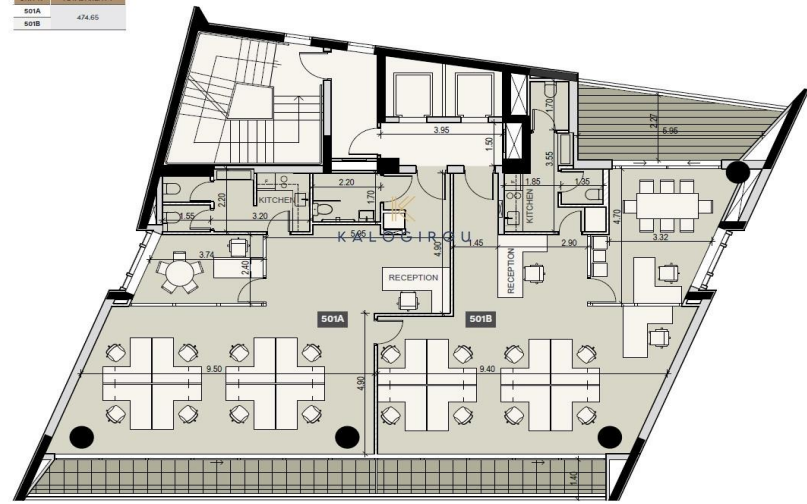
floor 4

UNIT N°	TOTAL AREA M <sup>2</sup>
401A	309.34
401B	



floor 5

UNIT N°	TOTAL AREA M <sup>2</sup>
501A	474.65
501B	



floor 6

