


Office for Rent in Limassol - Petrou kai Pavlou

This office in Petrou Kai Pavlou, Limassol is available for rent, offering a modern open-plan workspace occupying the entire 4th floor of a newly built,  standalone office building with panoramic views of the sea and the city.

The building consists of 4 floors plus a communal roof garden, with each floor designed as a spacious open-plan layout of 170 m², ideal for flexible office use.

Office features:

- ✓ Entire 4th floor office
- ✓ Open-plan space: 170 m²
- ✓ Covered veranda: 23 m²
- ✓ Air conditioning system
- ✓ 2 WCs
- ✓ Kitchen
- ✓ Covered underground parking: 3 spaces (option to increase)
- ✓ CCTV system

Building ...

Property Info

Plot / Area Info

Additional info

Covered Veranda	23	Reference Number	12916
Floor Number	4	Property type	Office
Total Number of Floors	4		

Amenities

Location

- Elevator

Location: Limassol - Petrou kai Pavlou Region: **Limassol**
Coordinates: 34.69616126 / 33.03110362

Price: €8 600 + VAT

VAT	Excluded	Title transfer fee	~€129.00	Common expenses	None
		Price per SQM	N/A		

Representative: RealDeal Estates

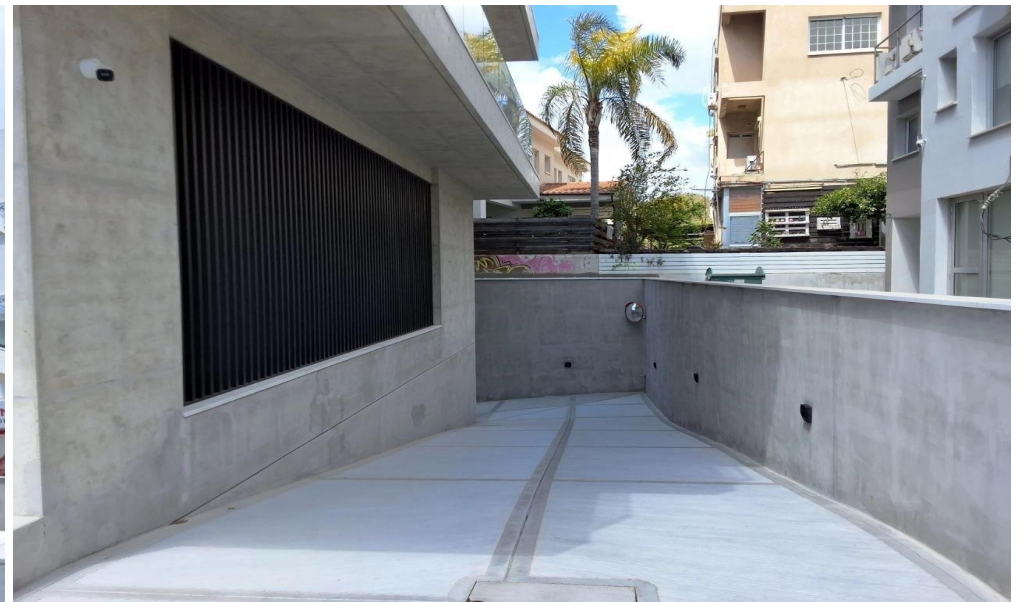
Registration number	1311	Email	info@realdeal.cy
License number	347/E	Legal name	Esperia Estates (Limassol-Paphos) Limited
Phone: +35725255505, +35794001333			

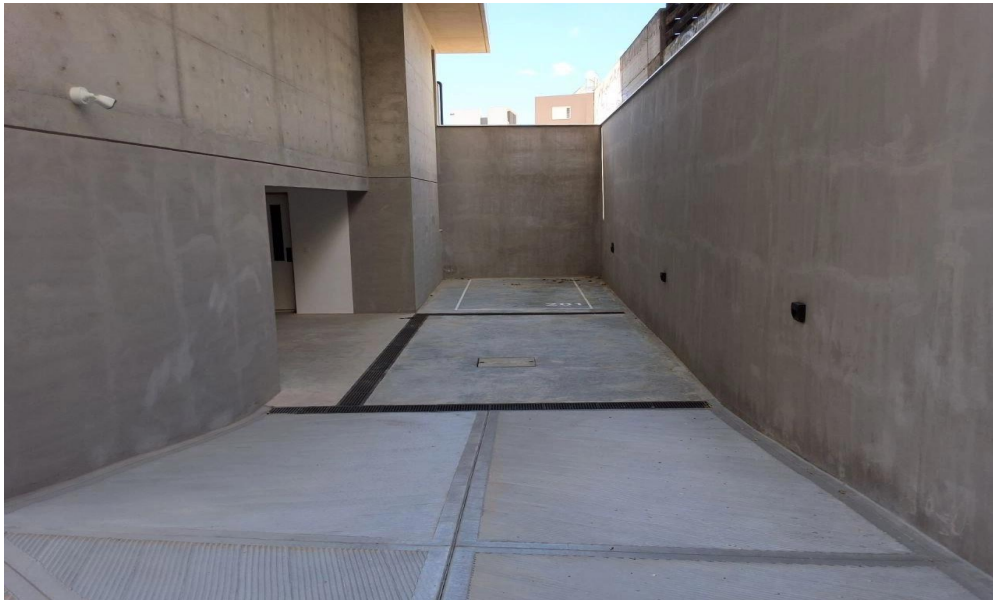
Price change history

€8 600 on Apr 12, 2026



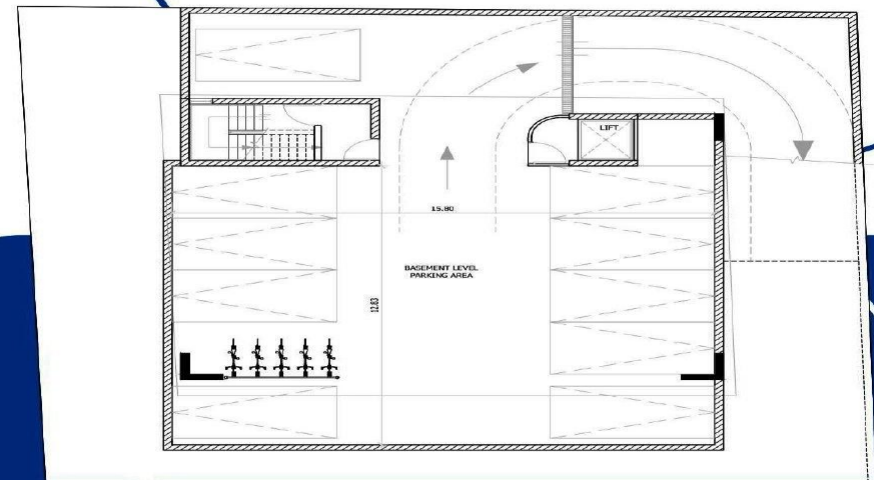
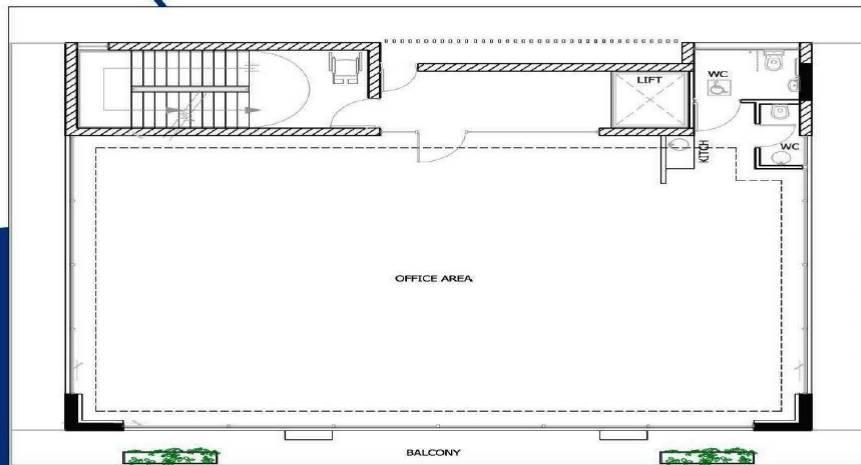






1st,2nd,3rd,4th FLOOR PLAN

BASEMENT PLAN



ROOF GARDEN PLAN

