


253m² Office for Rent in Limassol District

This whole fourth floor office in Chalkoutsa, Limassol is available for rent, situated within a contemporary commercial development currently under construction in one of the city's most vibrant business areas. 

The project occupies a prominent corner location surrounded by retail shops, banks, insurance companies, law firms, cafes, and schools. It also benefits from excellent connectivity, with close proximity to Spyrou Kyprianou Avenue, Limassol city centre, and the highway.

Designed with premium materials and modern technical specifications, the building offers a professional and energy-efficient working environment with integrated green spaces and a spacious high-rise r...

Property Info

Covered Area	253
Covered Veranda	10
Floor Number	4
Total Number of Floors	5
Energy Efficiency	A

Plot / Area Info

Additional info

Reference Number	13519
Property type	Office
Condition	Under Construction

Amenities

- Elevator

Location

Region: **Limassol**
 Coordinates: **34.69573785 / 33.05034042**

Price: €8 100 + VAT

VAT for this property is **€867** or **€1,539**. VAT usually is 19%. If it is your first purchase of property, you can have VAT reduced to 5% for the first 150sq.m. of the property.

VAT	Excluded	Title transfer fee	None	Common expenses	None
		Price per SQM	€32.00/m²		

Representative: RealDeal Estates

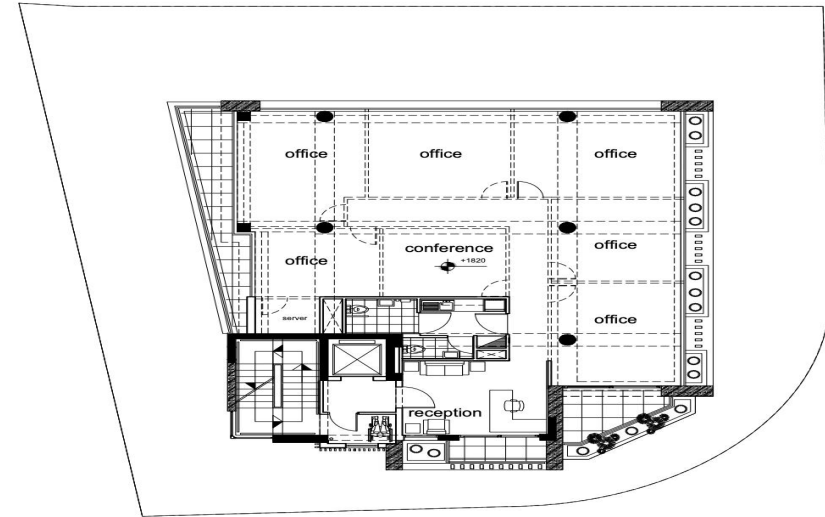
Registration number	1311	Email	info@realdeal.cy
License number	347/E	Legal name	Esperia Estates (Limassol-Paphos) Limited
Phone: +35725255505, +35794001333			

Price change history

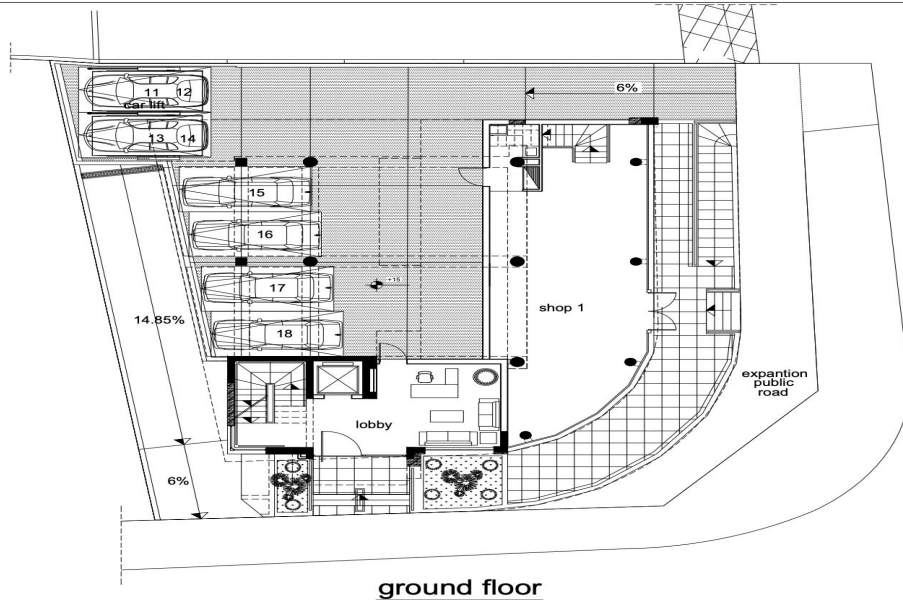
€8 100 on May 11, 2026



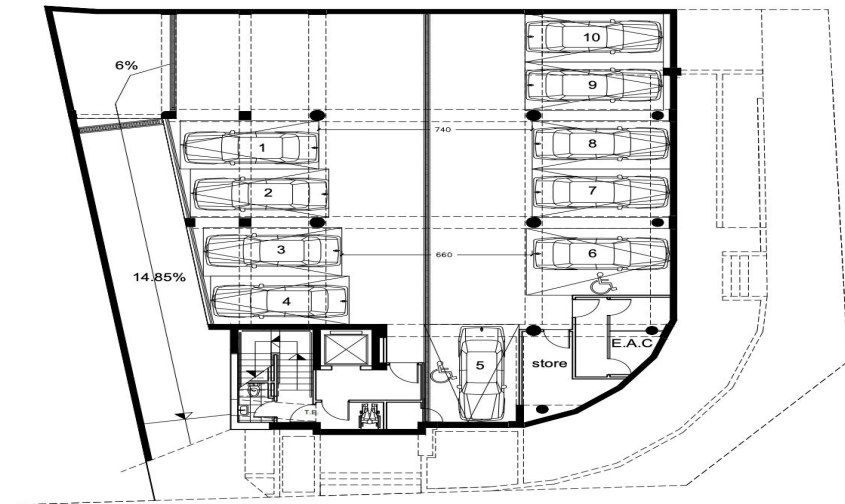




4rt floor - office



ground floor



basement