


# 1 Bedroom Apartment for Rent in Potamos Germasogeias, Limassol District

This 1-bedroom apartment in Potamos Germasogeias, Limassol is available for rent, located on the 9th floor of a prestigious 25-storey luxury residential tower in one of Limassol's most desirable coastal areas. 

Designed with contemporary architecture and premium specifications, the development offers an exceptional lifestyle experience combining comfort, privacy, and high-end hotel-style amenities. Residents enjoy breathtaking sea and city views together with access to extensive leisure and wellness facilities within a secure gated community.

The apartment is fully furnished and features elegant interiors, high ceilings, and a spacious covered veranda, creating a bright and...

### Property Info

Covered Area	<b>73</b>
Covered Veranda	<b>18</b>
Floor Number	<b>9</b>
Total Number of Floors	<b>25</b>
Furnishing	<b>Furnished</b>

### Plot / Area Info

Pool	<b>Common, Yes</b>
Parking	<b>Covered, Yes</b>

### Additional info

Reference Number	<b>13705</b>
Property type	<b>Apartment</b>
Condition	<b>Brand New</b>
Bathrooms	<b>1</b>

### Amenities

- Parking

### Location

**Location:** Potamos Germasogeias      Region: **Limassol**  
 Coordinates: **34.70492892 / 33.10459615**

## Price: €4 000 + VAT

VAT for this property is **€200** or **€760**. VAT usually is 19%. If it is your first purchase of property, you can have VAT reduced to 5% for the first 150sq.m. of the property.

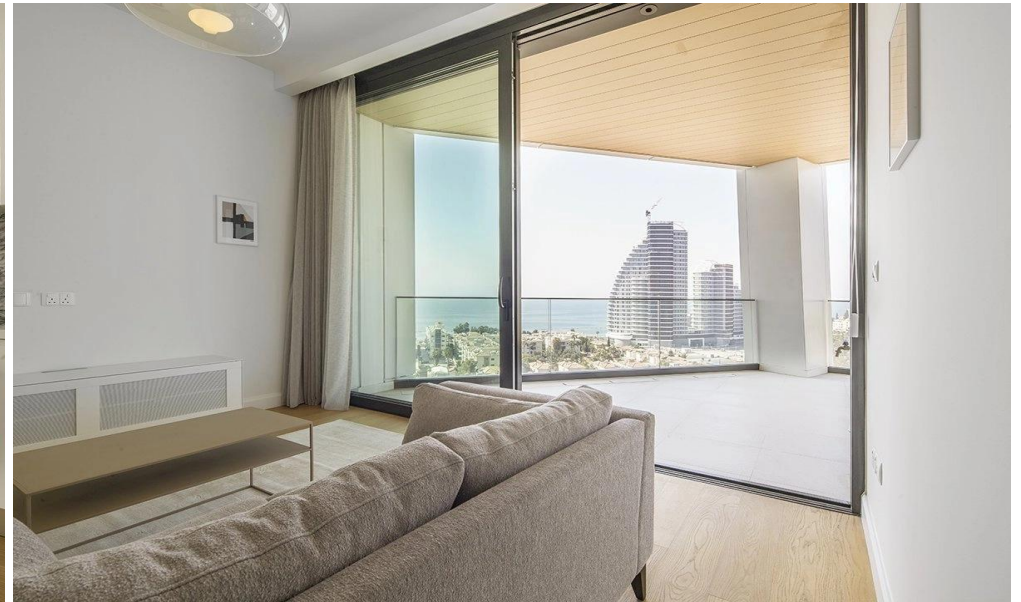
VAT	<b>Excluded</b>	Title transfer fee	<b>None</b>	Common expenses	<b>None</b>
		Price per SQM	<b>€55.00/m<sup>2</sup></b>		

## Representative: RealDeal Estates

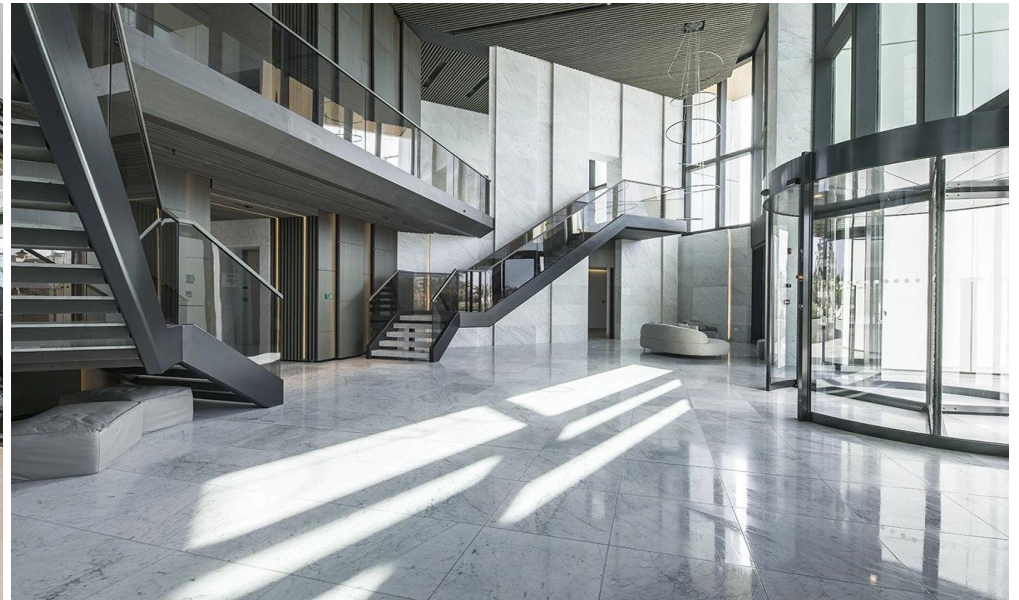
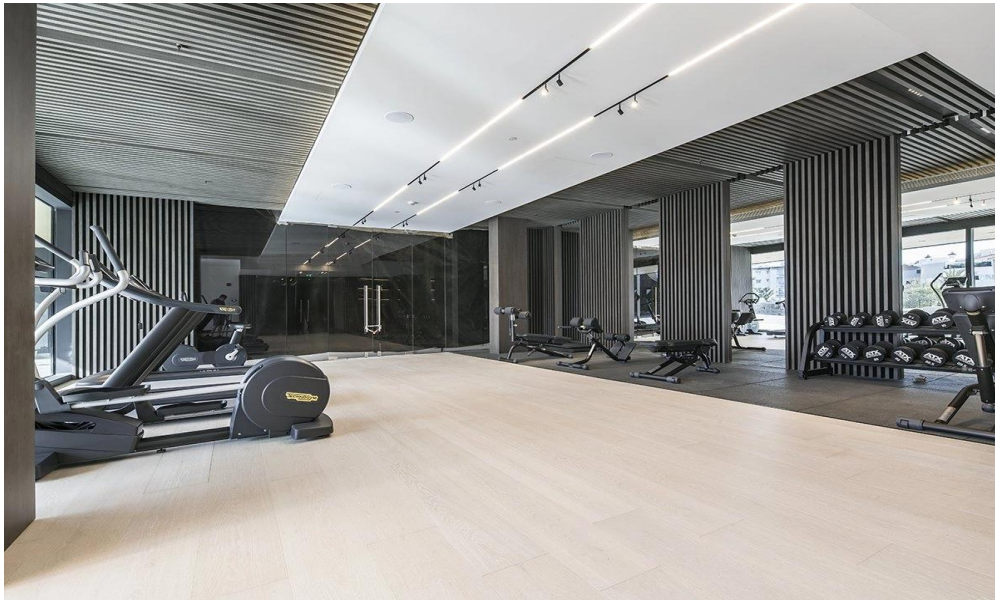
Registration number	<b>1311</b>	Email	<b>info@realdeal.cy</b>
License number	<b>347/E</b>	Legal name	<b>Esperia Estates (Limassol-Paphos) Limited</b>
Phone: <b>+35725255505, +35794001333</b>			

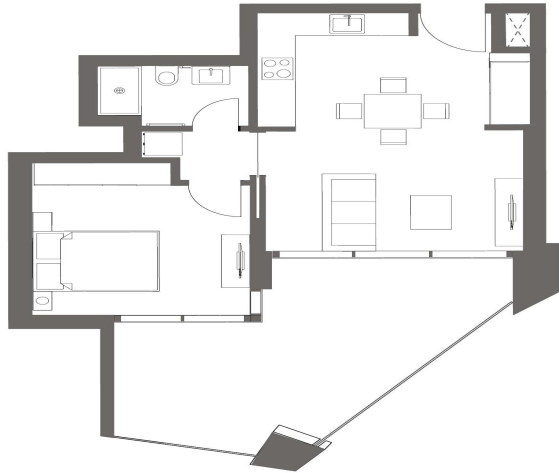
## Price change history

€4 000 on May 20, 2026









1 BEDROOM APARTMENT

INDOOR AREA	52.10 to 52.20 sq m	Living / Dining / Kitchen	6.70 m x 4.25 m
Covered veranda	From 13.70 to 24.15 sq m	Master Bedroom	4.30 m x 3.35 m
		Bathroom 01	1.50 m x 2.30 m

