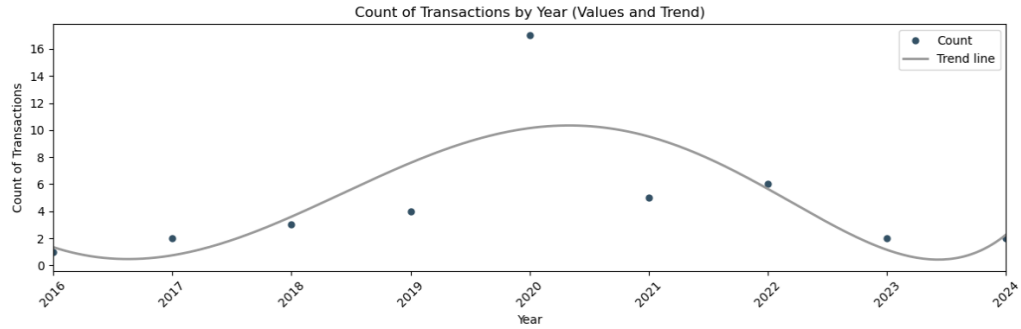


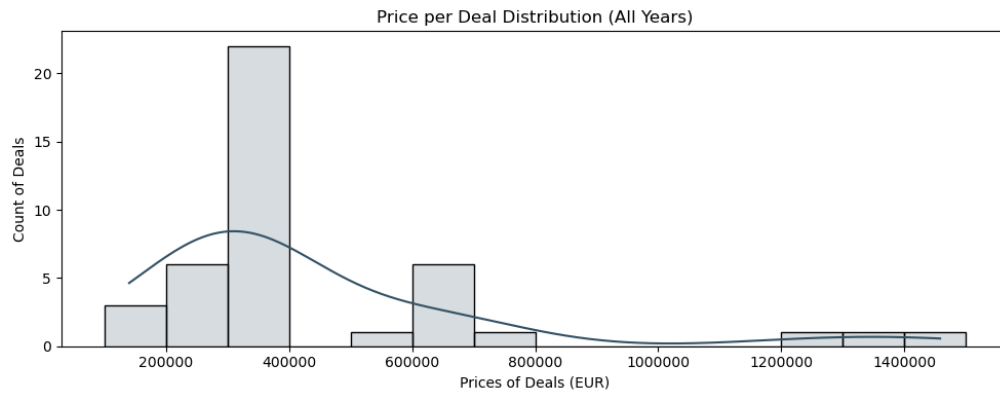


2. History of Object

2.1. Number of deals



2.2. Deals prices



2.3. Now on Sale in Object

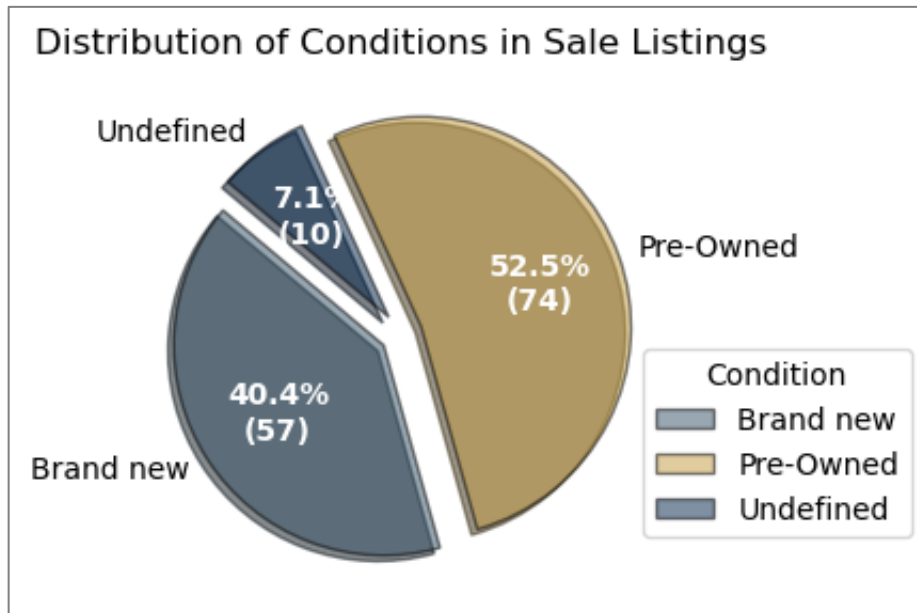
| Type | Bedrooms | Property area | Price | Price per sqm | Link |
|-----------|----------|---------------|---------|---------------|---|
| House | 2 | 98 | 390 000 | 4 000 | https://www.bazaraki.com/adv/5388983_2-bedroom-semi-detached-for-sale/ |
| Apartment | 3 | 114 | 522 000 | 4 600 | https://index.cy/sale/2579806-3-bedroom-apartment-for-sale-in-tala-paphos-district/ |
| House | 2 | 100 | 352 000 | 3 500 | https://index.cy/sale/2579792-2-bedroom-house-for-sale-in-tala-paphos-district/ |
| House | 2 | 98 | 390 000 | 4 000 | https://index.cy/sale/4131071-2-bedroom-house-for-sale-in-tala-paphos-district/ |



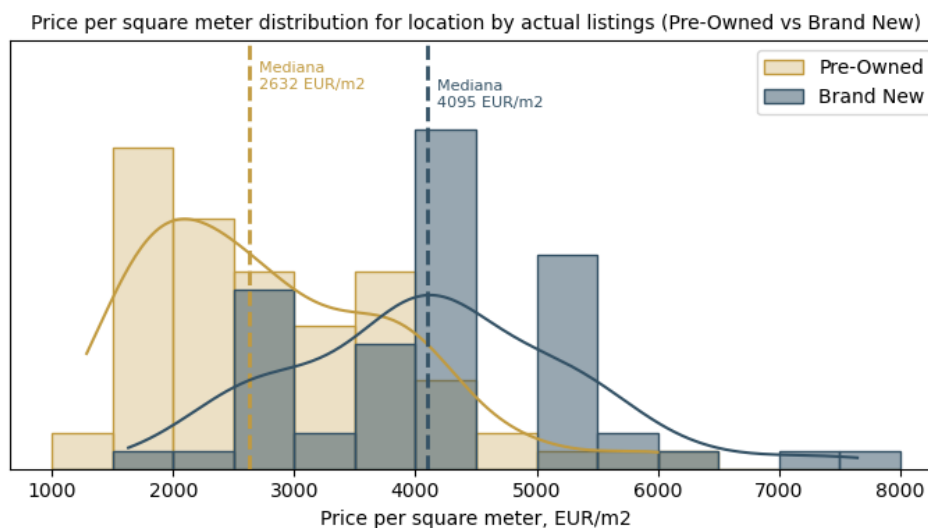
3. Vicinity information

3.1. Sale listings in vicinity (look to Picture № 1 for borders)

There are in listings offers: 141 ads



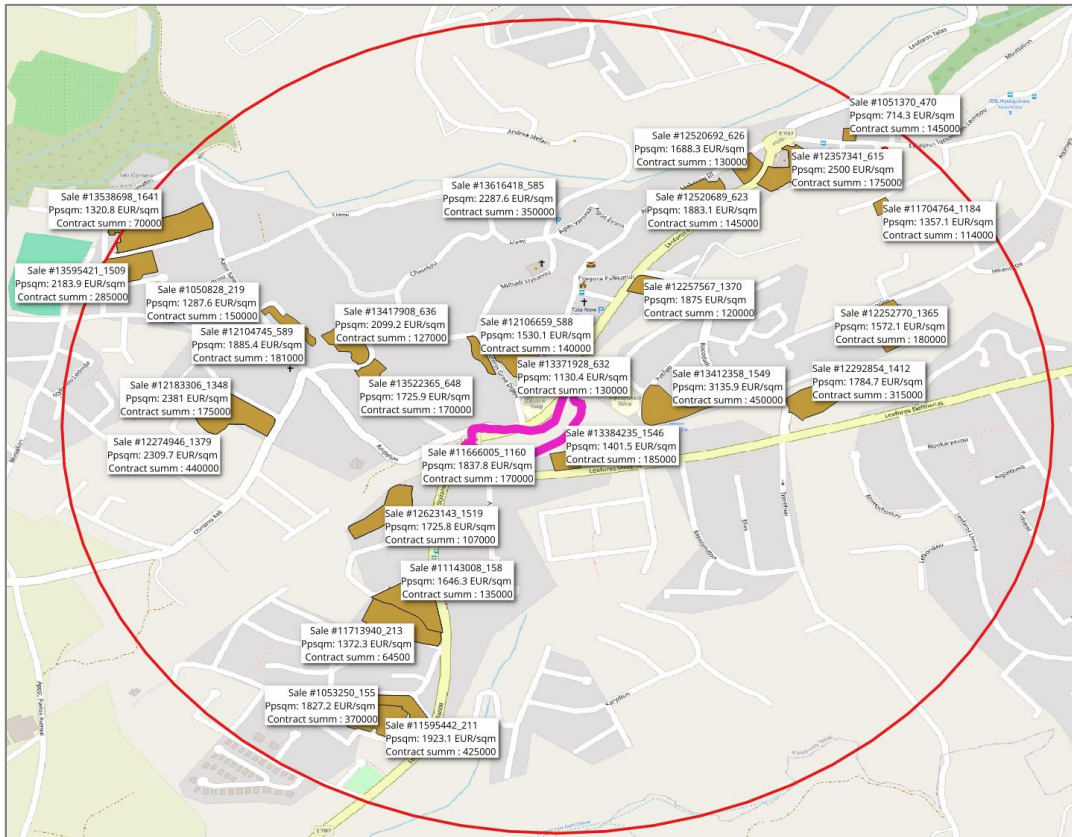
Distribution of Price per sqm, Gap between Brand New and Pre-Owned



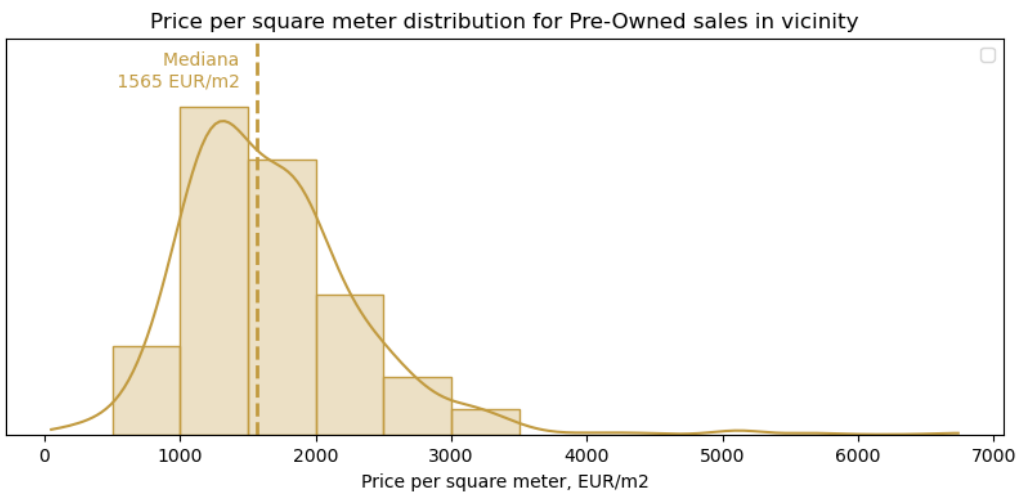


3.2. Deals with Pre-owned in vicinity

Number of deals: 64 deals in Y2023 - 9m2024



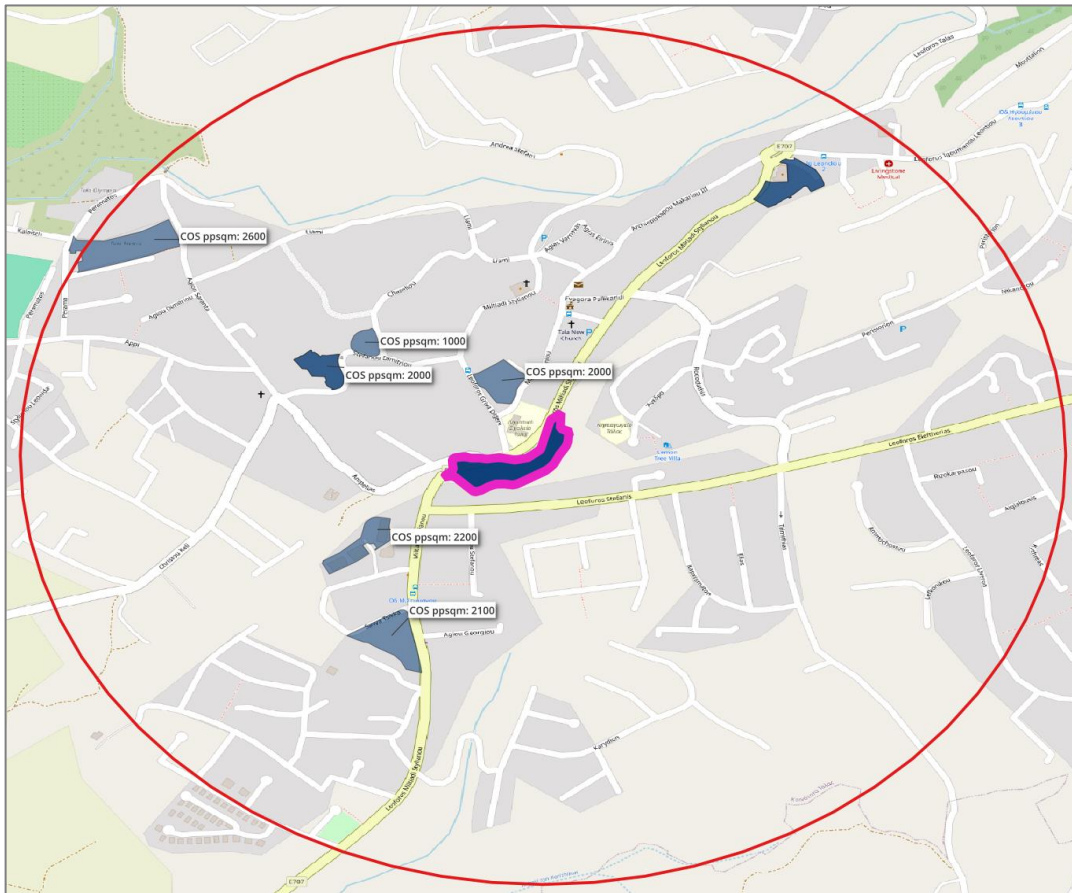
Distribution by Price per sqm of Pre-Owned Sales in Y2023 - 8m2024



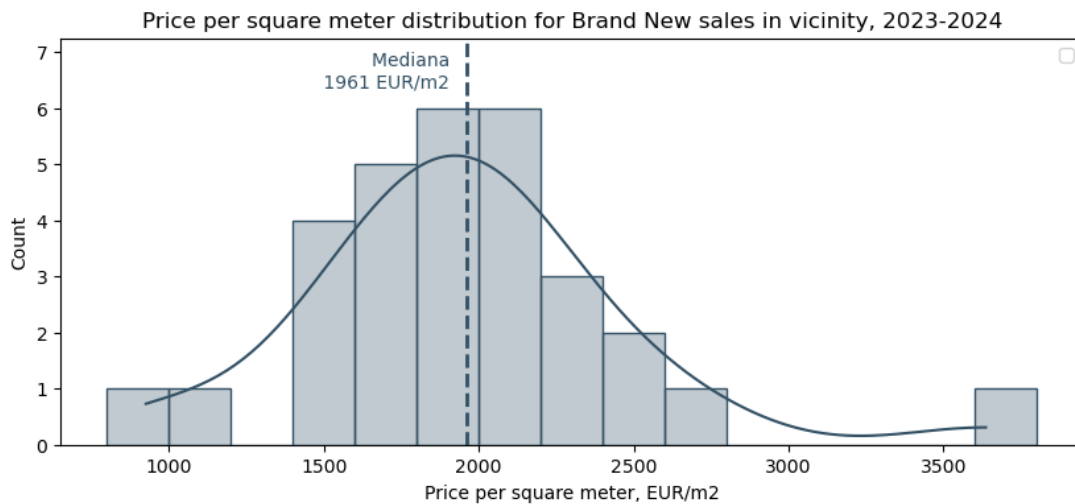


3.3. Deals with Brand New in vicinity (contract of sale)

Number of deals: 64 deals in Y2023 - 9m2024



Distribution by Price per sqm of Brand New Contracts in Y2023 - 8m2024





4. Price opportunity

4.1. Object characteristics

Location: on the Picture 1

Property area (enclose): 200 sqm

Property area (summary): 228 sqm

Bedrooms: 3

Bathrooms: Not Defined

Pool: Yes

View: Sea view

Energy efficiency: Not defined (defined as default for this region)

Air condition: Yes

Furnishing: Yes

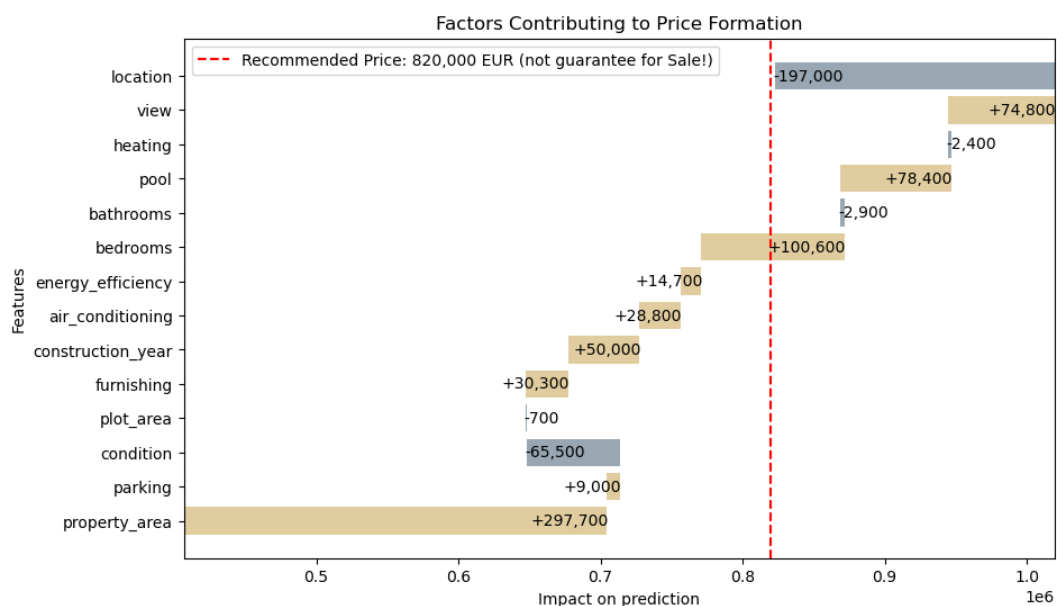
Condition: Pre-owned

Construction year: 2020

Parking: Yes

4.2. Price forecast for the listing

Recommended price for listing (real price in Deal can be less): 820,000 EUR

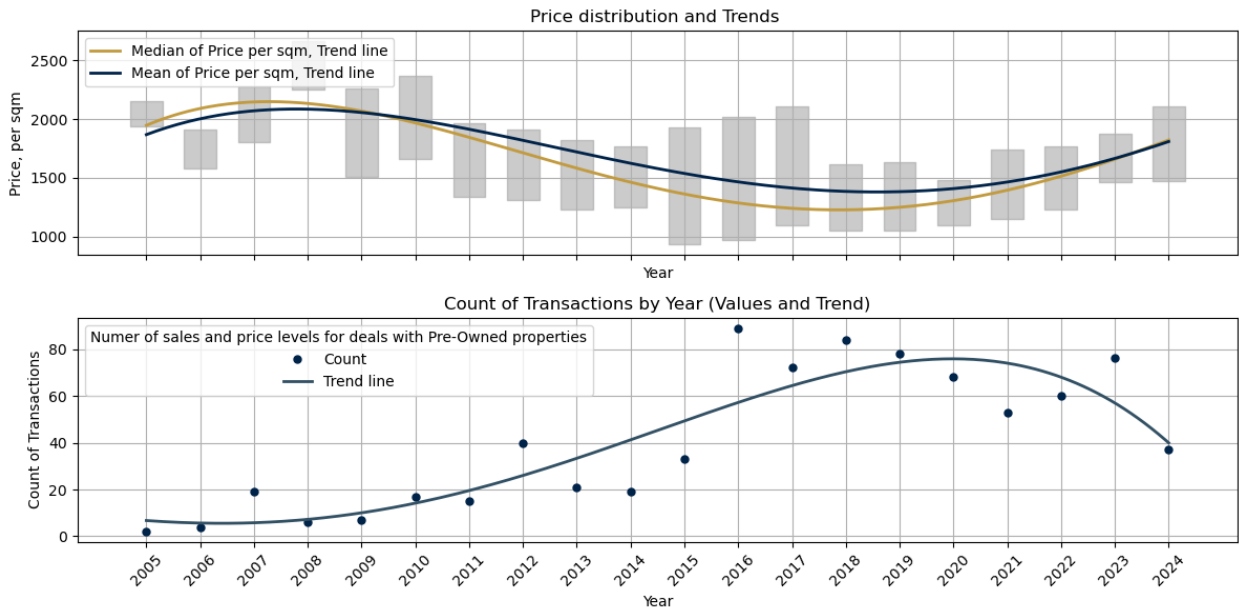


Note: Location price reduction reflects the specific characteristics of the property in comparison to the average parameters of the considered area.

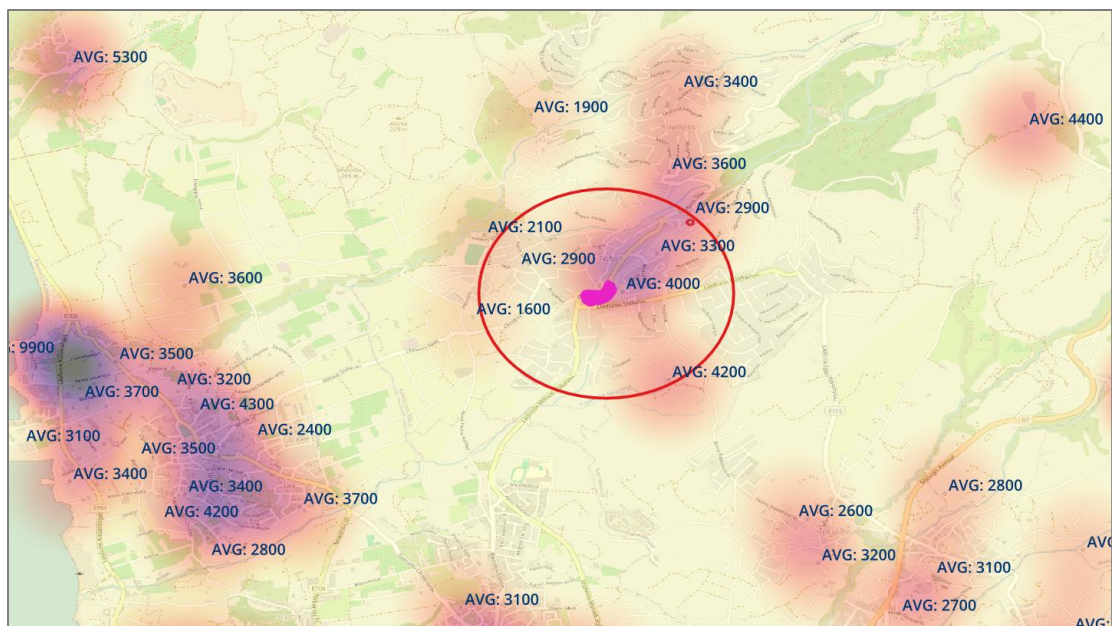


5. Investment characteristics of area

5.1. Long time trends:



5.2. Vicinity on the map:





Disclaimer

The information contained in this report is provided for informational purposes only and on an “as is” basis. It is not intended to constitute investment advice, financial guidance, professional opinion, consultation, or any other form of professional advice. The data reflects the current real estate market and should not be relied upon as a basis for making investment decisions. The recipient acknowledges that they assume full responsibility for any actions taken based on the information provided in this report. The provider disclaims all liability for any decisions made or actions taken by the recipient in reliance on this report.

The contents of this report are confidential and intended solely for the recipient. The report may not be reproduced, distributed, or disclosed to any third party without the prior written consent of the provider.