

## 2 Bedroom Apartment for Sale in Limassol - Panthea

2-Bedroom Apartment – Ideal for Living or Investment



Designed for functionality and style, this two-bedroom apartment includes a spacious living/dining area, a modern kitchen, two comfortable bedrooms, and a generous veranda. With covered parking, a storage room, and proximity to schools and amenities, it's a smart choice for families or rental investment.

### Property Info

Covered Area **92**  
 Floor Number **2**  
 Total Number of Floors **3**  
 Energy Efficiency **A**  
 Air Conditioning **All rooms, Yes**

### Plot / Area Info

Parking **Covered, Yes**

### Additional info

Reference Number **2514**  
 Property type **Apartment**  
 Condition **Under Construction**  
 Construction Year **2027**

### Amenities

- Parking

### Location

**Location:** Limassol - Panthea      Region: **Limassol**  
 Coordinates: **34.7110587 / 33.0308113**

## Price: €310 000 + VAT

VAT for this property is **€15,500** or **€58,900**. VAT usually is 19%. If it is your first purchase of property, you can have VAT reduced to 5% for the first 150sq.m. of the property.

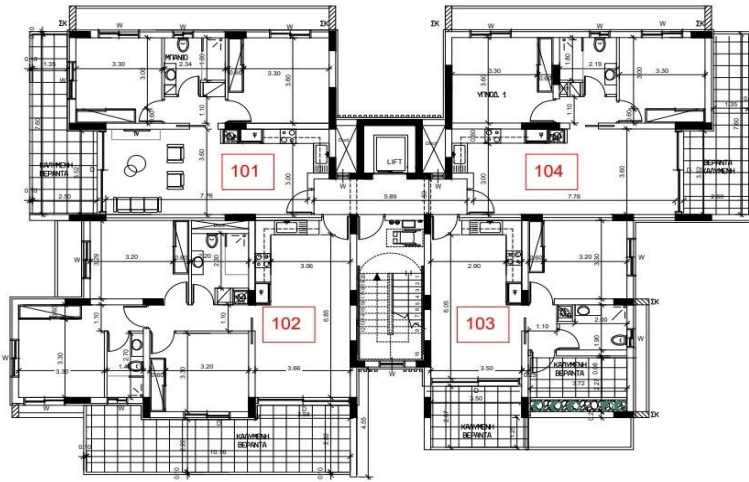
VAT	<b>Excluded</b>	Title transfer fee	<b>None</b>	Common expenses	<b>None</b>
		Price per SQM	<b>€3 370.00/m<sup>2</sup></b>		

## Representative: MySpace

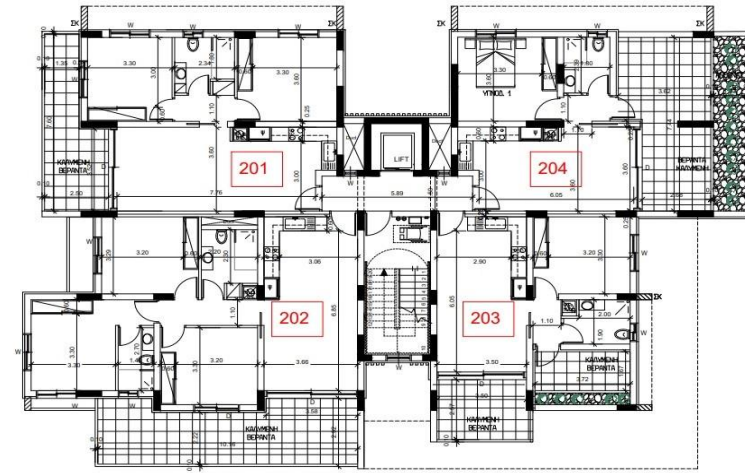
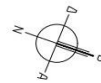
Registration number	<b>229/E</b>	Email	<b>myspace.cyprus@gmail.com</b>
License number	<b>1047</b>	Legal name	<b>MYSPLACE Real Estate/ A.SP.Thinkrealty ltd</b>
Phone:	<b>+35795129336, +35799409010</b>		

## Price change history

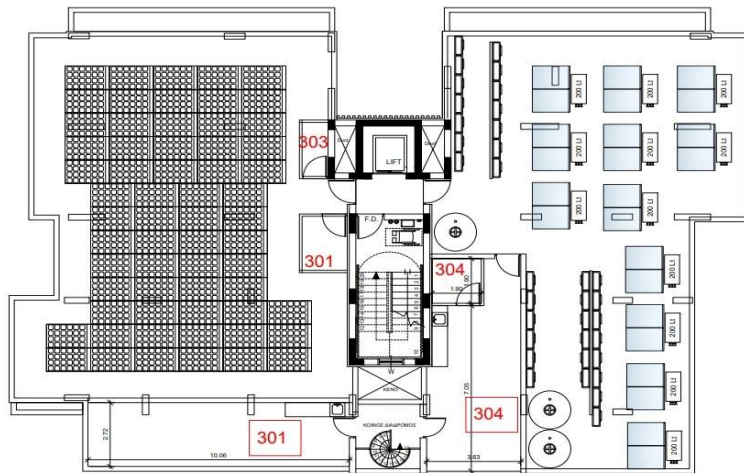
€269 000 on Dec 14, 2023  
€199 000 on Dec 29, 2023  
€254 000 on Jan 24, 2024  
€290 000 on Jul 6, 2025  
€310 000 on Jan 14, 2026



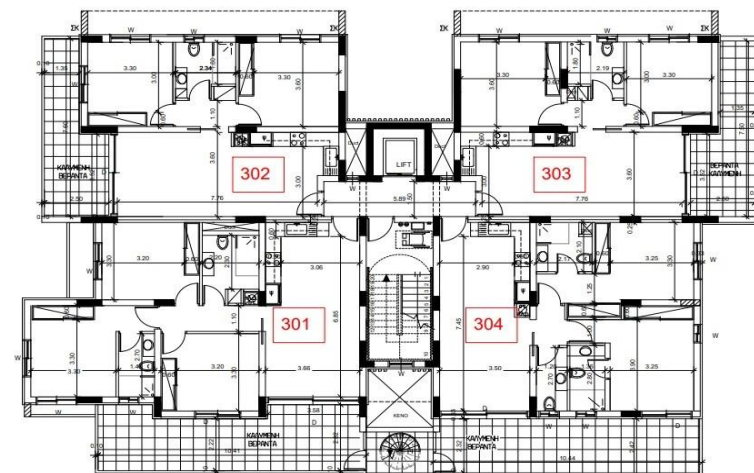
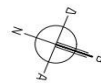
ΚΑΤΟΨΗ 1ου ΟΡΟΦΟΥ



ΚΑΤΟΨΗ 2ου ΟΡΟΦΟΥ



ΚΑΤΟΨΗ ΟΡΟΦΗΣ



ΚΑΤΟΨΗ 3ου ΟΡΟΦΟΥ

