

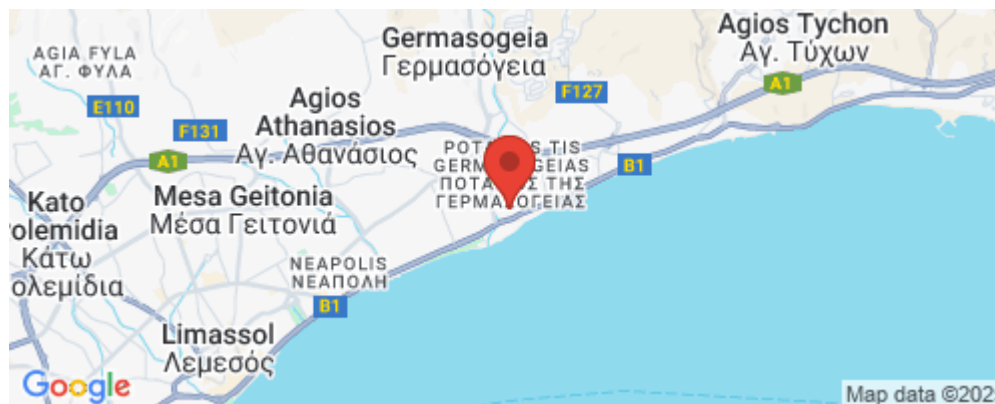
4 Bedroom Apartment for Sale in Germasogeia - Tourist Area, Limassol District

Spacious 4 bedroom apartment penthouse in 23-25 floors in a new high-rise building in Limassol, Germasogeia area, within walking distance of sandy beaches, cafes and the best restaurants. Only 10 minutes away from City Center.

All apartments have extensive south-facing covered verandas or roof gardens and panoramic sea and city views. Unique building design. First-class quality materials are used to ensure that the high standards and expectations of our customers are met.

- Common swimming pool
- Spa: sauna, hamam
- Massage
- Nail Bar
- Hair salon
- Fully equipped gym

Residents and guests will find full ra...



Property Info

Covered Area	286
Covered Veranda	84
Floor Number	23
Total Number of Floors	25
Energy Efficiency	A

Plot / Area Info

Pool	Common, Yes
Parking	Uncovered, Yes

Additional info

Reference Number	1961
Property type	Apartment
Condition	Under Construction
Construction Year	2024
Bathrooms	4
View	Mountains view

Amenities

- Parking

Location

Location: Germasogeia - Tourist Area
Coordinates: **34.698160560431 / 33.091084762976**

Region: **Limassol**

Price: €4 723 100 + VAT

VAT for this property is **€550,588** or **€897,389**. VAT usually is 19%. If it is your first purchase of property, you can have VAT reduced to 5% for the first 150sq.m. of the property.

VAT	Excluded	Title transfer fee	None	Common expenses	None
		Price per SQM	€16 514.00/m²		

Representative: MySpace

Registration number	229/E	Email	myspace.cyprus@gmail.com
License number	1047	Legal name	MYSPLACE Real Estate/ A.SP.Thinkrealty ltd
Phone: +35795129336, +35799409010			

Price change history

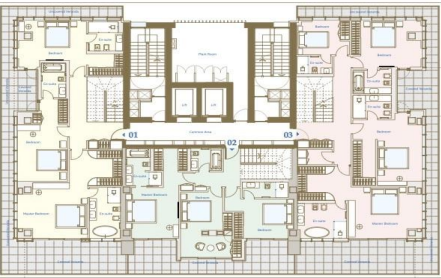
€4 298 000 on Dec 14, 2023

€4 727 250 on Feb 13, 2025

€4 723 100 on May 23, 2025

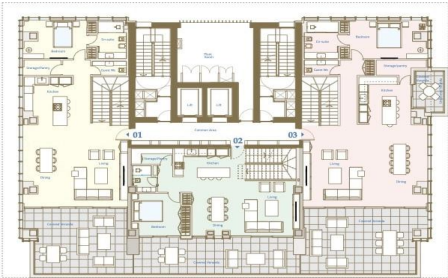


LEVEL 23rd Penthouse Apartments - Bedrooms



APARTMENT 01	APARTMENT 02	APARTMENT 03
Bedrooms: 4	Bedrooms: 4	Bedrooms: 5
Bathrooms: incl. 5	Bathrooms: incl. 4	Bathrooms: incl. 5
Total Covered area: 354.3 m ²	Total Covered area: 286.5 m ²	Total Covered area: 418.3 m ²
Covered Area: 284 m ²	Covered Area: 202 m ²	Covered Area: 326 m ²
Verandas: 70.3 m ²	Verandas: 84.5 m ²	Verandas: 92.3 m ²
Storage: 1	Storage: 1	Storage: 1
Outdoor Parking: 1	Outdoor Parking: 1	Outdoor Parking: 1
Covered Parking: 2	Covered Parking: 2	Covered Parking: 2
Carbans: 1	Carbans: 1	Carbans: 1

Penthouse Apartments - Living 24th LEVEL



LEVEL 25th Penthouse Roof Gardens



APARTMENT 01	APARTMENT 02	APARTMENT 03
Roof Garden	Roof Garden	Roof Garden
Un-Covered Area: 76 m ²	Un-Covered Area: 37 m ²	Un-Covered Area: 99 m ²
1. Kitchen Bar	1. Kitchen Bar	1. Kitchen Bar
2. Lounge / Dining	2. Lounge / Dining	2. Lounge / Dining
3. Jacuzzi	3. Jacuzzi	3. Jacuzzi
4. Storage	4. Storage	4. Storage
5. Shower	5. Shower	5. Shower
6. W.C.	6. W.C.	6. W.C.
7. Private Stairs to Apartment	7. Private Stairs to Apartment	7. Private Stairs to Apartment

