

## 3 Bedroom Apartment for Sale in Limassol District

- 3 bedrooms
- 3 W/C
- Internal Area 130m<sup>2</sup>
- Covered Veranda 22m<sup>2</sup>
- Roof Garden & Storage Area 28+14m<sup>2</sup>
- Covered Parking
- Communal Swimming Pool
- Panoramic Views
- Close to the beach



### Property Info

Covered Area  
Heating  
Air Conditioning

**130**  
**Central Heating, Yes**  
**All rooms, Yes**

### Plot / Area Info

Pool  
Parking

**Yes**  
**Covered, Yes**

### Additional info

Reference Number  
Property type  
Condition  
Bathrooms

**6603**  
**Apartment**  
**Brand New**  
**3**

### Amenities

- Guest WC

### Location

Region: **Limassol**  
Coordinates: **34.7227518 / 33.0845277**

## Price: €735 000 + VAT

VAT for this property is **€36,750** or **€139,650**. VAT usually is 19%. If it is your first purchase of property, you can have VAT reduced to 5% for the first 150sq.m. of the property.

VAT	<b>Excluded</b>	Title transfer fee	<b>None</b>	Common expenses	<b>None</b>
		Price per SQM	<b>€5 654.00/m<sup>2</sup></b>		

## Representative: Kadis Estates

Registration number	<b>506</b>	Email	<b>info@kadis.com.cy</b>
License number	<b>62/E</b>	Legal name	<b>N/A</b>
Phone: <b>+35722344842</b>			

## Price change history

€730 000 on Jul 12, 2024  
 €735 000 on Mar 13, 2025





## LEVEL 1

1. Swimming Pool
2. Changing Room | Women
3. Changing Room | Men
4. Disable W/C
5. Shower
6. Playground
7. Garden
8. Swimming Pool Storage
9. Block C | Entrance
10. Block D | Entrance
11. Lift
12. Vehicle Entry / Exit
13. Garbage
14. Pavement
15. Storage



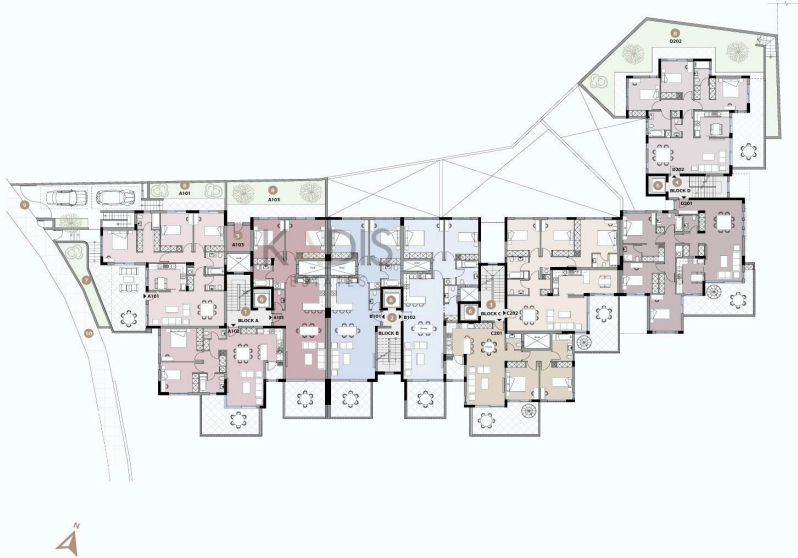
## LEVEL 2

1. Block A | Entrance
2. Block B | Entrance
3. Block C | Entrance
4. Block D | Entrance
5. Storage
6. Lift
7. Garden
8. Private Garden
9. Vehicle Entry / Exit
10. Parking Area
11. Garbage
12. Pavement



## LEVEL 3

1. Block A | Entrance
2. Block B | Entrance
3. Block C | Entrance
4. Block D | Entrance
5. Storage
6. Lift
7. Garden
8. Private Garden
9. Vehicle Entry / Exit
10. Pavement



## LEVEL 4

1. Block A | Entrance
2. Block B | Entrance
3. Block C | Entrance
4. Block D | Entrance
5. Storage
6. Lift



