

2 Bedroom Apartment for Sale in Germasogeia, Limassol District

2-Bedroom Apartment – Contemporary Elegance with a Relaxed Lifestyle



General Description

The 2-bedroom apartment offers a refined balance of space, light, and comfort, ideal for small families or professionals seeking a modern home in a secure gated community. With open-plan living areas and panoramic views from large balconies, it embodies the spirit of contemporary Mediterranean living.

Designed for year-round enjoyment, the apartment blends functionality with elegance, providing generous interiors and access to high-quality communal amenities.

Layout & Features

A spacious open-plan living and dining area connects effortlessly to the modern kitchen, c...

Property Info

Covered Area	90
Covered Veranda	24
Floor Number	3
Total Number of Floors	4
Energy Efficiency	A

Plot / Area Info

Pool	Common, Yes
Parking	Covered, Yes

Additional info

Reference Number	232641
Property type	Apartment
Condition	Under Construction
Construction Year	2026
Bathrooms	2
View	Mountains view

Amenities

- Parking

Location

Location: Germasogeia

Region: **Limassol**

Coordinates: **34.727219047444 / 33.085379080071**

Price: €448 000 + VAT

VAT for this property is **€22,400** or **€85,120**. VAT usually is 19%. If it is your first purchase of property, you can have VAT reduced to 5% for the first 150sq.m. of the property.

VAT	Excluded	Title transfer fee	None	Common expenses	None
		Price per SQM	€4 978.00/m²		

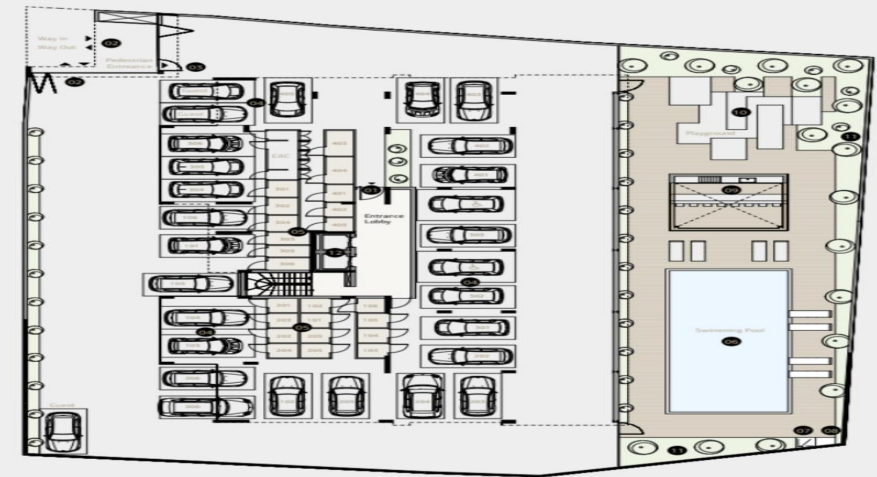
Representative: MySpace

Registration number	229/E	Email	myspace.cyprus@gmail.com
License number	1047	Legal name	MYSPACE Real Estate/ A.SP.Thinkrealty ltd
Phone: +35795129336, +35799409010			

Price change history

€392 730 on Sep 5, 2024
 €421 048 on Nov 19, 2024
 €448 000 on May 7, 2025





Ground Floor

- | | |
|-----------------------------|-------------------|
| 1. Entrance / Lobby | 7. Pool Shower |
| 2. Vehicle Entrance | 8. Foot Bath |
| 3. Pedestrian Entrance | 9. BBQ - Bar area |
| 4. Parking Area | 10. Playground |
| 5. Storages | 11. Garden |
| 6. Swimming Pool 1.40 Depth | 12. Lift |