

## 2 Bedroom Apartment for Sale in Strovolos, Nicosia District

Two-Bedroom Apartment - Contemporary Comfort in the Heart of Acropolis ✖

The two-bedroom apartments in this boutique Acropolis development redefine urban living with a touch of tranquility. Designed to combine style, functionality, and comfort, each residence offers a serene retreat just moments from the city's vibrant center.

### Design & Atmosphere

Every apartment has been meticulously crafted with open-plan layouts, creating a seamless flow between the living, dining, and kitchen areas. Expansive glass doors invite abundant natural light and open onto spacious private verandas — perfect for morning coffee, evening relaxation, or quiet time surrounded by greenery. ...

### Property Info

Covered Area	<b>173</b>
Covered Veranda	<b>45</b>
Uncovered Veranda	<b>15</b>
Floor Number	<b>4</b>
Total Number of Floors	<b>4</b>
Energy Efficiency	<b>A</b>

### Plot / Area Info

Parking **Covered, Yes**

### Additional info

Reference Number	<b>232768</b>
Property type	<b>Apartment</b>
Condition	<b>Under Construction</b>
Construction Year	<b>2026</b>
Bathrooms	<b>2</b>

### Amenities

- Parking

### Location

**Location:** Strovolos

Region: **Nicosia**

Coordinates: **35.154102889102 / 33.357324832243**

## Price: €525 000 + VAT

VAT for this property is **€36,022** or **€99,750**. VAT usually is 19%. If it is your first purchase of property, you can have VAT reduced to 5% for the first 150sq.m. of the property.

VAT	<b>Excluded</b>	Title transfer fee	<b>None</b>	Common expenses	<b>None</b>
		Price per SQM	<b>€3 035.00/m<sup>2</sup></b>		

## Representative: MySpace

Registration number	<b>229/E</b>	Email	<b>myspace.cyprus@gmail.com</b>
License number	<b>1047</b>	Legal name	<b>MYSPACE Real Estate/ A.SP.Thinkrealty ltd</b>
Phone:	<b>+35795129336, +35799409010</b>		

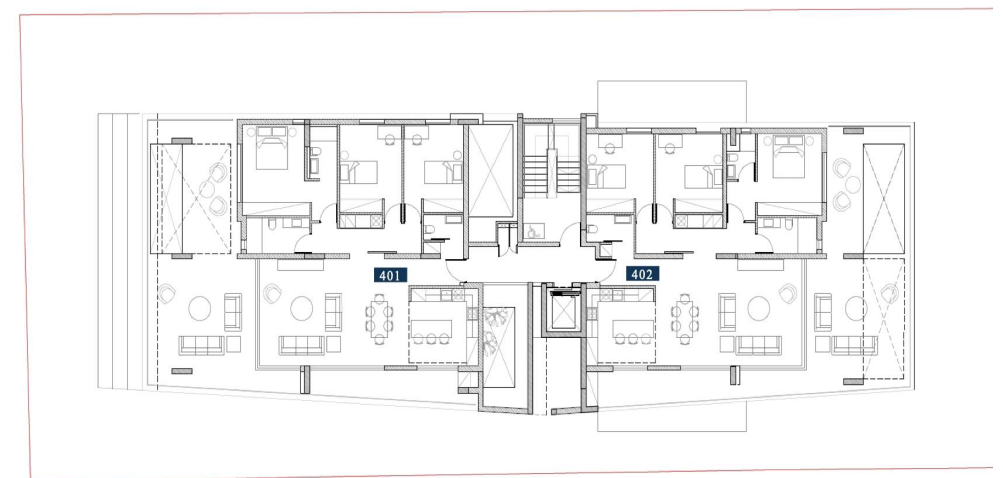
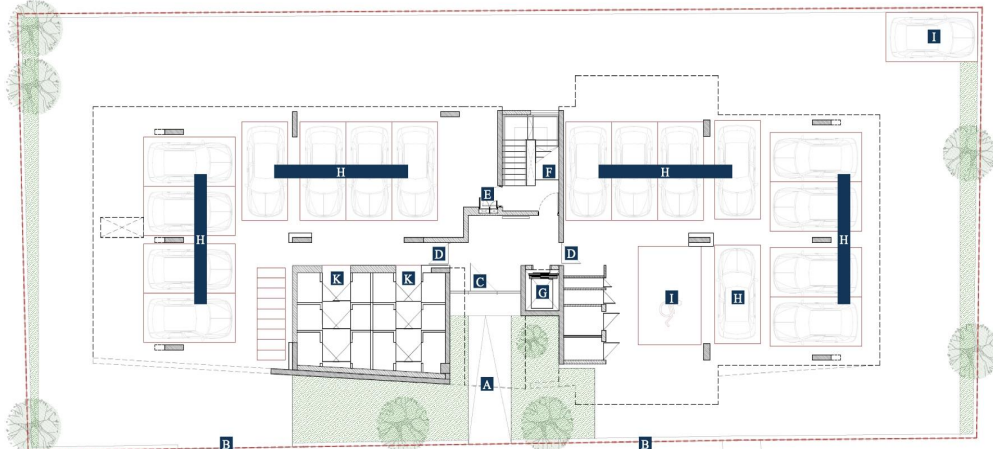
## Price change history

€525 000 on Sep 11, 2024



BUILDINGS A & B  
GROUND FLOOR

FOURTH FLOOR



- |                           |                     |                         |                         |
|---------------------------|---------------------|-------------------------|-------------------------|
| A Pedestrian entrance     | D Building entrance | G Lift                  | J Visitor parking space |
| B Parking entrance / exit | E Emergency exit    | H Parking space         | K Storerooms            |
| C Building main entrance  | F Staircase         | I Disable parking space |                         |