

2 Bedroom Apartment for Sale in Limassol District

- 2 bedrooms
- 2 W/C
- Internal Area 76m²
- Covered Verandas 23m²
- Covered Parking
- Storage
- Energy Efficiency "A"



Property Info

Covered Area
Heating
Air Conditioning

76
Central Heating, Yes
All rooms, Yes

Plot / Area Info

Parking **Covered, Yes**

Additional info

Reference Number **8725**
Property type **Apartment**
Condition **Brand New**
Bathrooms **2**

Amenities

- Elevator

Location

Region: **Limassol**
Coordinates: **34.672315698563 / 33.017726640352**

Price: €275 000 + VAT

VAT for this property is **€13,750** or **€52,250**. VAT usually is 19%. If it is your first purchase of property, you can have VAT reduced to 5% for the first 150sq.m. of the property.

| | | | | | |
|-----|-----------------|--------------------|--------------------------------|-----------------|-------------|
| VAT | Excluded | Title transfer fee | None | Common expenses | None |
| | | Price per SQM | €3 618.00/m² | | |

Representative: Kadis Estates

| | | | |
|---------------------|-------------|------------|--------------------------|
| Registration number | 506 | Email | info@kadis.com.cy |
| License number | 62/E | Legal name | N/A |
| Phone: +35722344842 | | | |

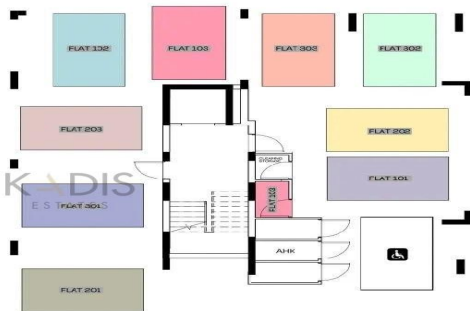
Price change history

€260 000 on Nov 15, 2024
€275 000 on Jan 31, 2026

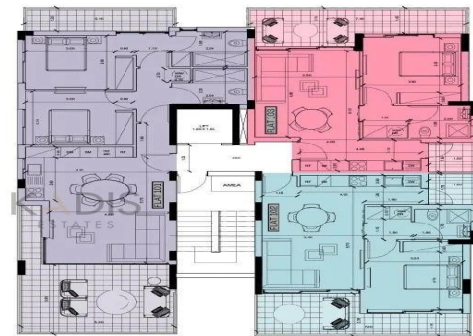




| | | |
|----------|--------------------------------|---|
| FLAT 101 | COVERED PARKING | 1 |
| FLAT 102 | COVERED PARKING | 1 |
| FLAT 103 | COVERED PARKING | 1 |
| | STORAGE ROOM (M ²) | 3 |
| FLAT 201 | COVERED PARKING | 1 |
| FLAT 202 | COVERED PARKING | 1 |
| FLAT 203 | COVERED PARKING | 1 |
| FLAT 301 | COVERED PARKING | 1 |
| FLAT 302 | COVERED PARKING | 1 |
| FLAT 303 | COVERED PARKING | 1 |



- ▲ A/C Provisions
- ▲ Bathroom Natural Ventilation
- ▲ Covered Parking
- ▲ Electric Heating Provisions
- ▲ Kitchen Natural Ventilation
- ▲ Kitchen Veranda
- ▲ Laundry Spot
- ▲ Storage Room



| | BEDROOMS | BATHROOMS | INTERNAL AREAS (M ²) | COVERED VERANDAS (M ²) | UNCOVERED VERANDAS (M ²) | ROOF GARDEN (M ²) | STORAGE ROOM (M ²) | COMMON AREAS (M ²) | TOTAL AREAS (M ²) |
|----------|----------|-----------|----------------------------------|------------------------------------|--------------------------------------|-------------------------------|--------------------------------|--------------------------------|-------------------------------|
| FLAT 101 | 2 | 2 | 78 | 23 | — | — | 3 | 7 | 109 |
| FLAT 102 | 1 | 1 | 50 | 16 | — | — | 3 | 5 | 73 |
| FLAT 103 | 1 | 1 | 50 | 16 | — | — | 3 | 5 | 73 |

