

3 Bedroom House for Sale in Agios Tychonas, Limassol District

Modern complex of nine maisonettes in the peaceful area of Agios Tychonas, Limassol. Just a short drive away from Limassol, this development provides a serene living environment with easy access to the city’s amenities.

Each unit features an additional above-ground space on the lower level, which can be converted into living quarters if desired. Plumbing installations are already in place here, although this option is not included in the standard design. Additionally, there is a separate laundry area on the roof, which can also be transformed into extra living space, such as an additional bedroom.

AVAILABILITY

Maisonettes

Internal area 128 sq.m.

Cove...

Property Info

Plot / Area Info

Covered Area **225**

Additional info

Reference Number	55377
Property type	House
Condition	Under Construction
Construction Year	2026
Bathrooms	3

Amenities

- Garden

Location

Location: Agios Tychonas Region: **Limassol**

Price: €450 000 + VAT

VAT for this property is **€43,500** or **€85,500**. VAT usually is 19%. If it is your first purchase of property, you can have VAT reduced to 5% for the first 150sq.m. of the property.

VAT	Excluded	Title transfer fee	None	Common expenses	None
		Price per SQM	€2 000.00/m²		

Representative: 1st Class Homes

Registration number

690

Email

info@1stclass-homes.com

License number

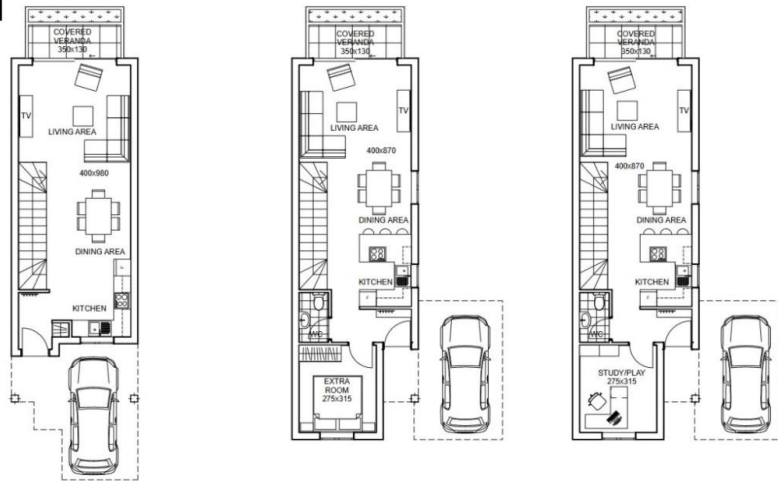
367/E

Legal name

KM FIRST CLASS HOMES LTD, KM FIRST CLASS HOMES SERVICES LTDPhone: **+35725310243, +35770000889****Price change history**

€450 000 on Dec 6, 2024

Ground floor



TYPE A
TWO BEDROOM HOUSE
parking in front
INT. COVERED AREA 46.09m²
EXT. COVERED AREAS 16.50m²

TYPE B.1
TWO BEDROOM HOUSE
parking on the site
INT. COVERED AREA 56.44m²
EXT. COVERED AREAS 6.70m²

TYPE B.2
TWO BEDROOM HOUSE
parking on the site

Roof



TYPE A.1
TWO BEDROOM HOUSE
parking in front
INTERNAL COVERED AREA 17.60M²
EXT. COVERED AREA 4.84M²
EXT. UNCOVERED AREA 36.54M²

TYPE B.1
TWO BEDROOM HOUSE
parking on the site
INTERNAL COVERED AREA 17.60M²
EXT. COVERED AREA 4.84M²
EXT. UNCOVERED AREA 36.54M²

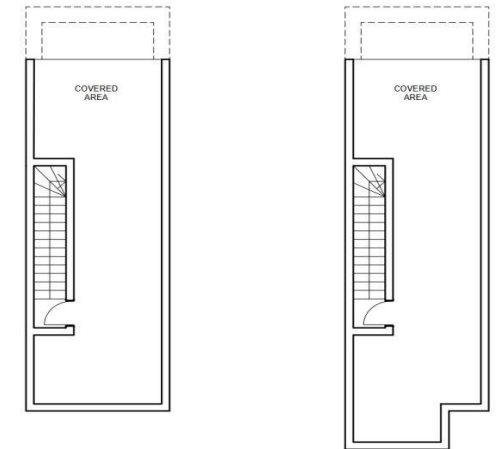
TYPE A.2
TWO BEDROOM HOUSE
parking in front

Back façade

Houses 7,8,9



Basement



TYPE A
TWO BEDROOM HOUSE
parking in front
INTERNAL COVERED AREA 9.33M²
EXT. COVERED AREA 49.65M²

TYPE B
TWO BEDROOM HOUSE
parking on the site
INTERNAL COVERED AREA 9.33M²
EXT. COVERED AREA 53.90M²



First floor

