

4 Bedroom House for Sale in Livadia Larnakas, Larnaca District

New 4-bedroom villa for sale in Livdia, Larnaca. Elegant open-plan kitchen/living room. The house is part of a small complex that consists of 5 houses. It stands on a spacious plot of 320 m2, with a garden, private pool and garage. Located in a quiet but developed area, close to all amenities. Just a few minutes from the city center. It is an ideal option for both living and investment.

Property Info

Covered Area	196
Furnishing	Unfurnished
Energy Efficiency	A
Air Conditioning	All rooms, Yes

Plot / Area Info

Parking	Covered, Yes
---------	---------------------

Additional info

Reference Number	115335
Property type	House
Condition	Brand New
Bathrooms	3

Amenities

Location

Location: Livadia Larnakas Region: **Larnaca**

Price: €545 000 + VAT

VAT for this property is **€45,157** or **€103,550**. VAT usually is 19%. If it is your first purchase of property, you can have VAT reduced to 5% for the first 150sq.m. of the property.

VAT	Excluded	Title transfer fee	None	Common expenses	None
		Price per SQM	€2 781.00/m²		

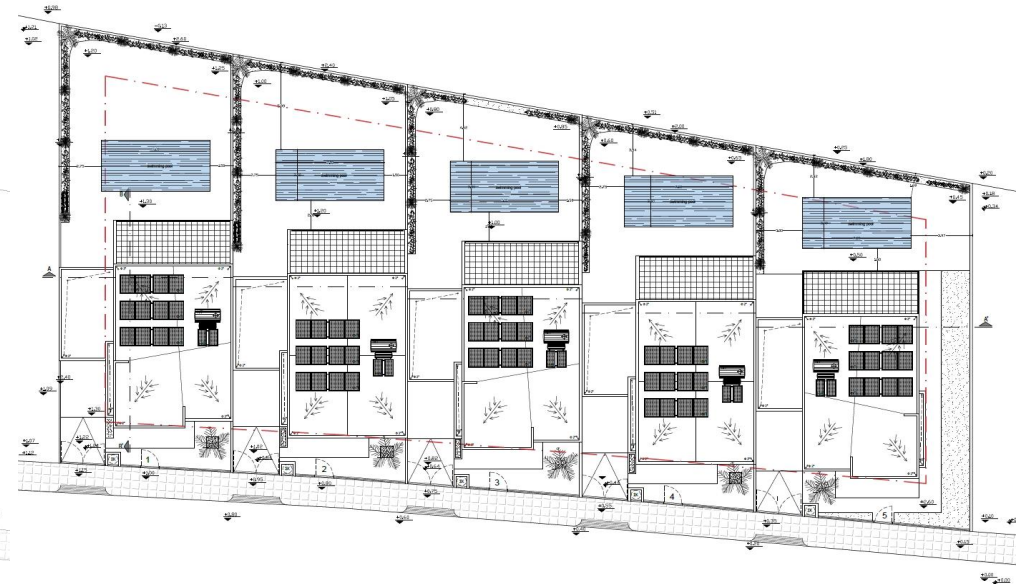
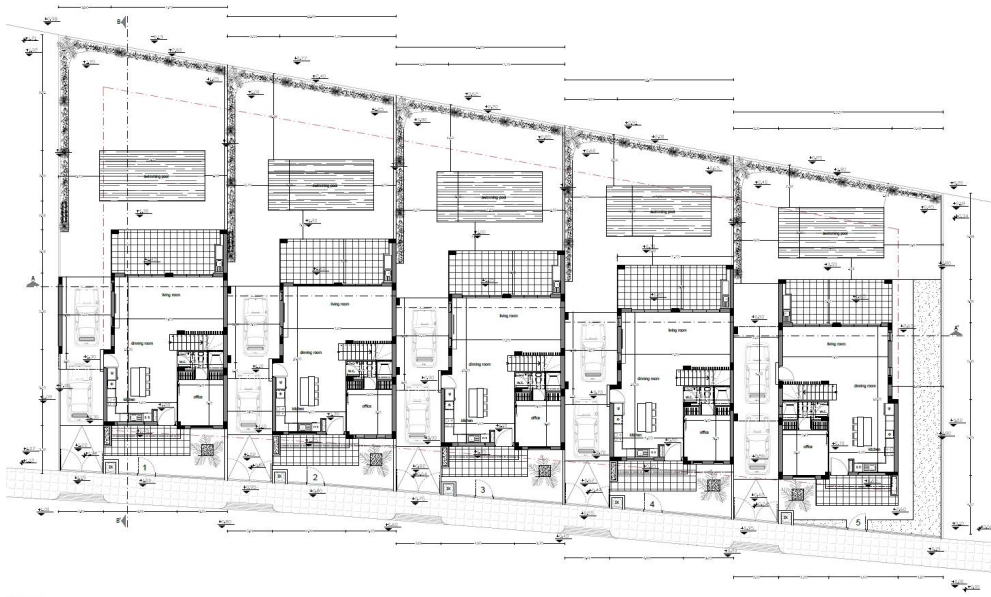
Representative: DOM Real Estate

Registration number	397	Email	info@dom.com.cy
License number	338/E	Legal name	N/A
Phone: +35796644888			

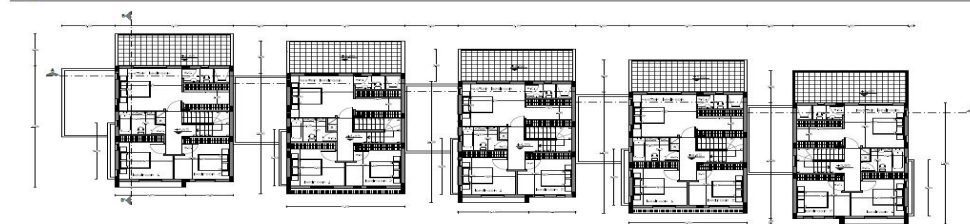
Price change history

€545 000 on Dec 10, 2024





KATOIKIA 1	KATOIKIA 2	KATOIKIA 3	KATOIKIA 4	KATOIKIA 5
<ul style="list-style-type: none"> • Πλατεϊά γκαράζ: 60.00m² • Αρδευτικό: 10.00m² • Εμβαδόν κατασκευής: 133.17m² 	<ul style="list-style-type: none"> • Πλατεϊά γκαράζ: 60.00m² • Αρδευτικό: 10.00m² • Εμβαδόν κατασκευής: 133.17m² 	<ul style="list-style-type: none"> • Πλατεϊά γκαράζ: 60.00m² • Αρδευτικό: 10.00m² • Εμβαδόν κατασκευής: 133.17m² 	<ul style="list-style-type: none"> • Πλατεϊά γκαράζ: 60.00m² • Αρδευτικό: 10.00m² • Εμβαδόν κατασκευής: 133.17m² 	<ul style="list-style-type: none"> • Πλατεϊά γκαράζ: 60.00m² • Αρδευτικό: 10.00m² • Εμβαδόν κατασκευής: 133.17m²



KATOIKIA 1	KATOIKIA 2	KATOIKIA 3	KATOIKIA 4	KATOIKIA 5
<ul style="list-style-type: none"> • Πλατεϊά γκαράζ: 60.00m² • Αρδευτικό: 10.00m² • Εμβαδόν κατασκευής: 133.17m² 	<ul style="list-style-type: none"> • Πλατεϊά γκαράζ: 60.00m² • Αρδευτικό: 10.00m² • Εμβαδόν κατασκευής: 133.17m² 	<ul style="list-style-type: none"> • Πλατεϊά γκαράζ: 60.00m² • Αρδευτικό: 10.00m² • Εμβαδόν κατασκευής: 133.17m² 	<ul style="list-style-type: none"> • Πλατεϊά γκαράζ: 60.00m² • Αρδευτικό: 10.00m² • Εμβαδόν κατασκευής: 133.17m² 	<ul style="list-style-type: none"> • Πλατεϊά γκαράζ: 60.00m² • Αρδευτικό: 10.00m² • Εμβαδόν κατασκευής: 133.17m²

