

## 1062m<sup>2</sup> Office for Sale in Limassol - Mesa Geitonia

We offer for sale an office in a first-class commercial project located on Spirou Kyprianou Avenue, just a few minutes from the Agios Athanasios intersection. The project is a five—storey building featuring 12 modern office spaces designed for maximum efficiency and filled with natural light. The elegant architecture and advantageous location create ideal conditions for companies to grow and succeed.

### Property Info

Covered Area **1062**

Energy Efficiency **A**

### Plot / Area Info

### Additional info

Reference Number **123862**

Property type **Office**

Condition **Brand New**

### Amenities

### Location

**Location:** Limassol - Mesa Geitonia Region: **Limassol**

## Price: €6 106 000 + VAT

VAT for this property is **€1,039,400** or **€1,160,140**. VAT usually is 19%. If it is your first purchase of property, you can have VAT reduced to 5% for the first 150sq.m. of the property.

VAT	<b>Excluded</b>	Title transfer fee	<b>None</b>	Common expenses	<b>None</b>
		Price per SQM	<b>€5 750.00/m²</b>		

## Representative: DOM Real Estate

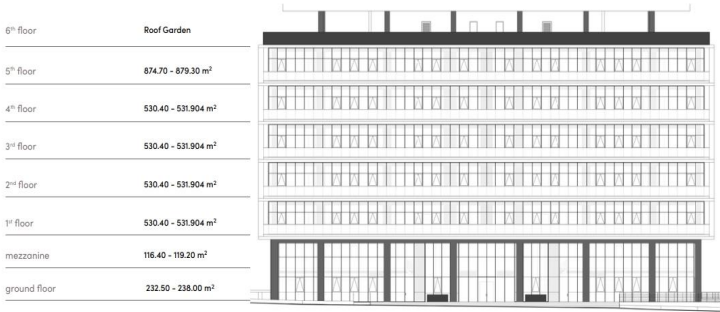
Registration number	<b>397</b>	Email	<b>info@dom.com.cy</b>
License number	<b>338/E</b>	Legal name	<b>N/A</b>
Phone: +35796644888			

## Price change history

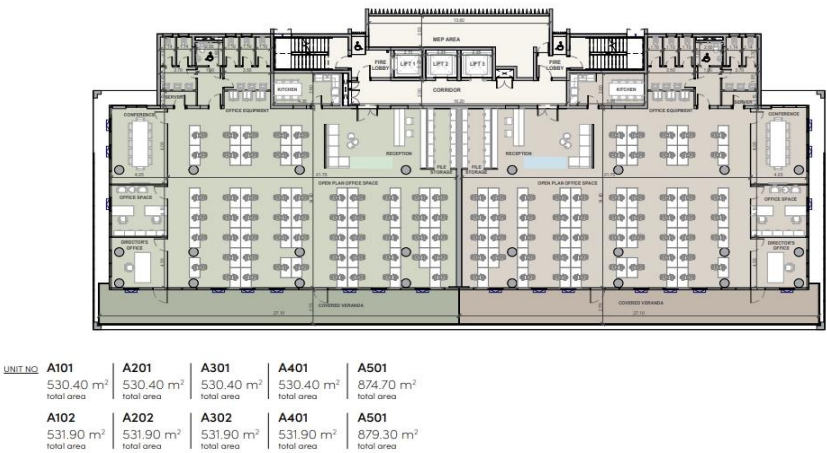
€6 106 000 on Jan 17, 2025



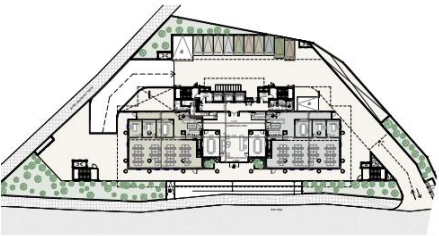
choice of properties



typical floor plan



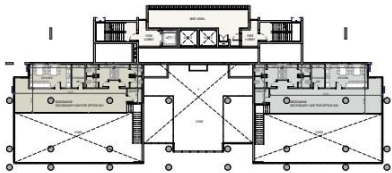
ground floor



UNIT NO	A001	A002
	348.90 m² total area	357.20 m² total area



mezzanine



UNIT NO	A001 mezzanine	A002 mezzanine
	116.40 m² total area	119.20 m² total area

