

## 2 Bedroom Apartment for Sale in Limassol - Zakaki

- 2 bedrooms
- 2 W/C
- Internal Area 84.4m<sup>2</sup>
- Covered Veranda 20.9m<sup>2</sup>
- Covered Parking
- Communal Swimming Pool
- Gym/Sauna
- Energy Efficiency "A"
- Walking distance from the beach



### Property Info

Covered Area	<b>84</b>
Heating	<b>Central Heating, Yes</b>
Air Conditioning	<b>All rooms, Yes</b>

### Plot / Area Info

Pool	<b>Yes</b>
Parking	<b>Covered, Yes</b>

### Additional info

Reference Number	<b>10167</b>
Property type	<b>Apartment</b>
Condition	<b>Brand New</b>
Bathrooms	<b>2</b>
View	<b>Sea view</b>

### Amenities

- Gym

### Location

**Location:** Limassol - Zakaki      Region: **Limassol**  
**Coordinates:** **34.6564363 / 33.0029105**

## Price: €440 000 + VAT

VAT for this property is **€22,000** or **€83,600**. VAT usually is 19%. If it is your first purchase of property, you can have VAT reduced to 5% for the first 150sq.m. of the property.

VAT	<b>Excluded</b>	Title transfer fee	<b>None</b>	Common expenses	<b>None</b>
		Price per SQM	<b>€5 238.00/m<sup>2</sup></b>		

## Representative: Kadis Estates

Registration number	<b>506</b>	Email	<b>info@kadis.com.cy</b>
License number	<b>62/E</b>	Legal name	<b>N/A</b>
Phone: +35722344842			

## Price change history

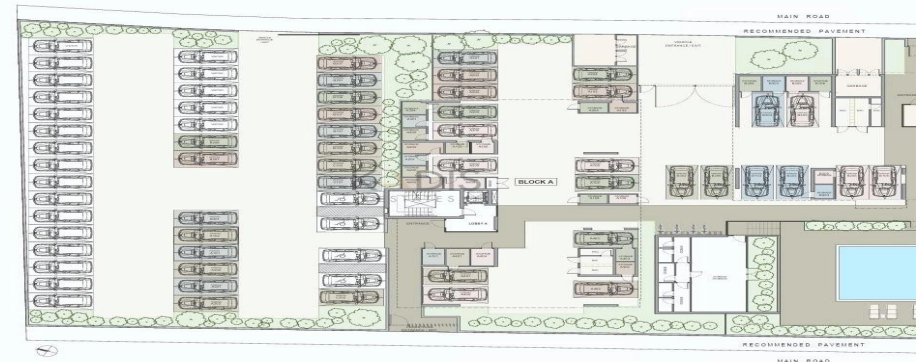
€440 000 on Feb 8, 2025







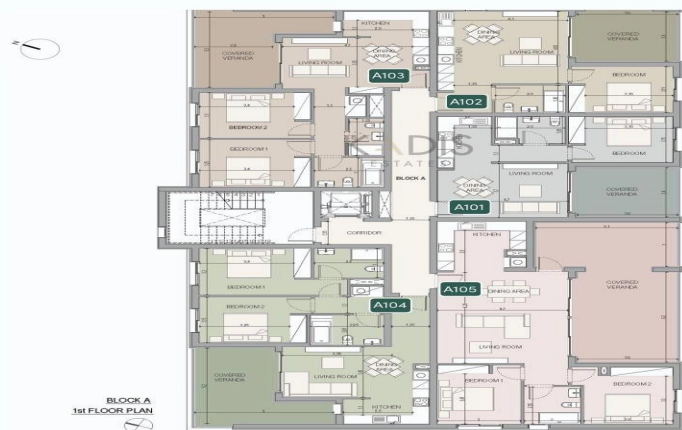
ground floor



## block a

### floor 1

UNIT N°	TOTAL AREA M <sup>2</sup>
A101	65.80
A102	66.02
A103	99.85
A104	105.26
A105	129.75



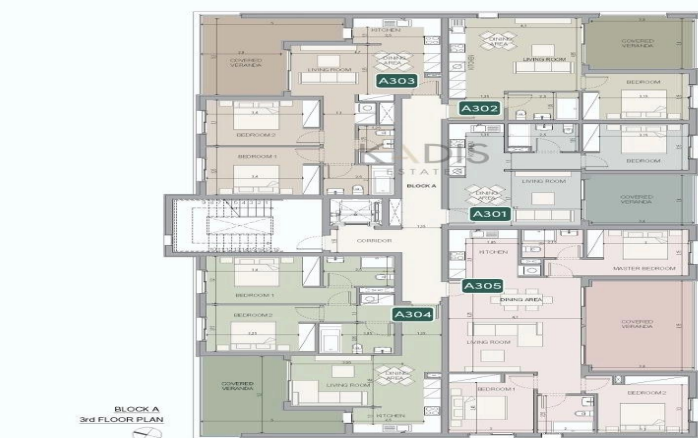
### floor 2

UNIT N°	TOTAL AREA M <sup>2</sup>
A201	65.80
A202	66.02
A203	99.85
A204	105.26
A205	129.41



### floor 3

UNIT N°	TOTAL AREA M <sup>2</sup>
A301	65.80
A302	66.02
A303	99.85
A304	105.26
A305	129.41



### floor 4

UNIT N°	TOTAL AREA M <sup>2</sup>
A401	131.44
A402	99.85
A403	105.26
A404	129.13





## floor 2

UNIT N°	TOTAL AREA M²
B201	62.99
B202	65.13
B203	103.57
B204	48.49
B205	99.19
B206	65.13
B207	65.84



BLOCK B  
2ND FLOOR PLAN  
1:100

## floor 3

UNIT N°	TOTAL AREA M²
B301	62.99
B302	65.13
B303	103.57
B304	48.49
B305	99.19
B306	65.13
B307	65.84



BLOCK B  
3RD FLOOR PLAN  
1:100

## floor 4

UNIT N°	TOTAL AREA M²
B401	116.04
B402	103.57
B403	48.49
B404	103.95
B405	117.36



BLOCK B  
4TH FLOOR PLAN  
1:100

## block c

### floor 1

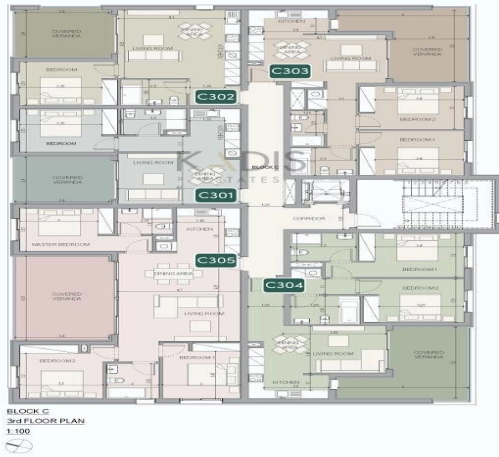
UNIT N°	TOTAL AREA M²
C101	65.80
C102	66.02
C103	99.85
C104	105.26
C105	128.75



BLOCK C  
1ST FLOOR PLAN  
1:100

## floor 3

UNIT N°	TOTAL AREA M²
C301	65.80
C302	66.02
C303	99.85
C304	105.26
C305	129.41



## floor 4

UNIT N°	TOTAL AREA M²
C401	121.44
C402	99.55
C403	105.26
C404	129.13

