

3 Bedroom Apartment for Sale in Paphos - Universal

Apartments for sale in a new complex in Paphos. It offers an exceptional location and a modern signature design focused on luxurious modern open-plan living. The complex consists of 7 two-bedroom apartments, 1 one-bedroom apartment and 2 three-bedroom apartments ranging from 55 to 104 m2, spread over three floors. Luxury amenities include smart technology, video intercom, sea views, covered parking, storage room and communal pool. Each apartment has a unique modern layout, harmoniously combining space and natural lighting, which ensures a relaxed sophistication of life. Get a chance to own these exclusive apartments and improve your lifestyle.

Property Info

Covered Area	129
Furnishing	Unfurnished
Energy Efficiency	A
Air Conditioning	No

Plot / Area Info

Parking **Covered, Yes**

Additional info

Reference Number	128876
Property type	Apartment
Condition	Brand New
Bathrooms	2

Amenities

Location

Location: Paphos - Universal Region: **Paphos**

Price: €480 000 + VAT

VAT for this property is **€24,000** or **€91,200**. VAT usually is 19%. If it is your first purchase of property, you can have VAT reduced to 5% for the first 150sq.m. of the property.

VAT	Excluded	Title transfer fee	None	Common expenses	None
		Price per SQM	€3 721.00/m²		

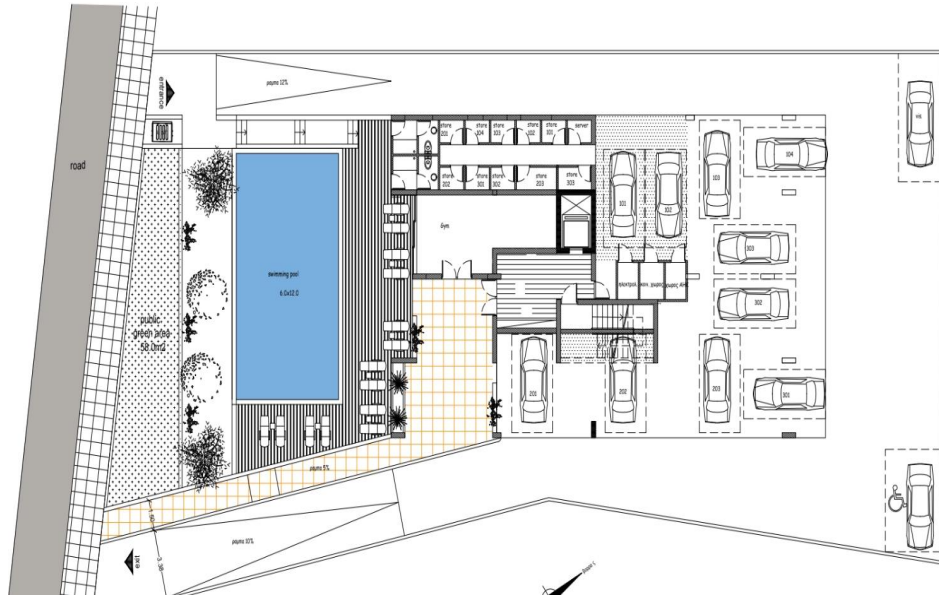
Representative: DOM Real Estate

Registration number	397	Email	info@dom.com.cy
License number	338/E	Legal name	N/A
Phone: +35796644888			

Price change history

€480 000 on Feb 22, 2025



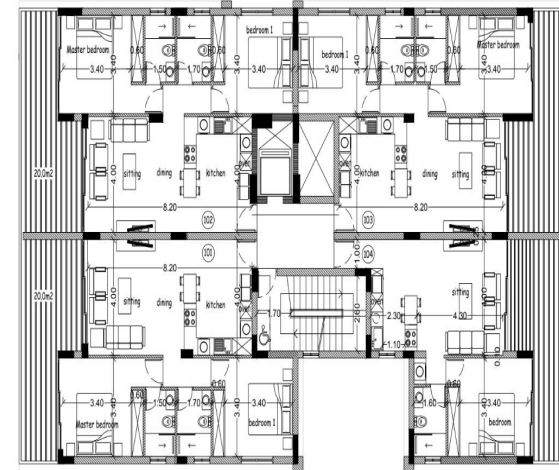


100.00 m² | Flat 101
 Living 80.00 m² | Flat 102
 Veranda 20.00 m² | Flat 103

First Floor

**2 Bedrooms/ 2 Bathrooms
 Covered Parking**

Master Bedroom	3.40x4.00
• En-suite	2.40x1.50
Bedroom 1	3.40x4.00
Living	4.00x3.75
Kitchen & Dining	4.00x4.45
Guest Bathroom	2.40x1.70
Balcony	7.50x3.10



**1 Bedroom/ 1 Bathroom
 Covered Parking**

Bedroom	3.40x4.00
Living	4.00x3.30
Kitchen & Dining	4.00x2.30
Bathroom	2.40x1.60
Balcony	7.50x3.10

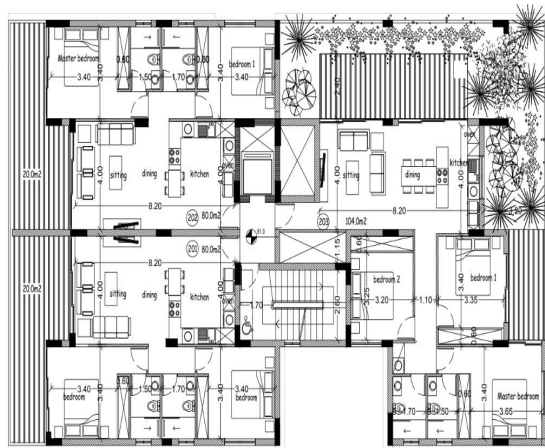
75.00 m² | Flat 104
 Living 55.00 m²
 Veranda 20.00 m²

100.00 m² | Flat 201
 Living 80.00 m² | Flat 202
 Veranda 20.00 m²

Second Floor

**2 Bedrooms/ 2 Bathrooms
 Covered Parking**

Master Bedroom	3.40x4.00
• En-suite	2.40x1.50
Bedroom 1	3.40x4.00
Living	4.00x3.75
Kitchen & Dining	4.00x4.45
Guest Bathroom	2.40x1.70
Balcony	7.50x3.10



**3 Bedrooms/ 2 Bathrooms
 Covered Parking**

Master Bedroom	3.40x4.25
• En-suite	2.40x1.50
Bedroom 1	4.00x3.35
Bedroom 2	3.85x3.20
Living	4.00x4.00
Kitchen & Dining	4.00x4.20
Guest Bathroom	2.40x1.70
Balcony	19.5x4.00 - 7.60x2.40

129.00 m² | Flat 203
 Living 104.00 m²
 Veranda 25.00 m²