

## 2 Bedroom Apartment for Sale in Empa, Paphos District

Your trusted real estate partner in Paphos

At Risera Properties, we are dedicated to transforming urban living in Paphos, the most beautiful region of Cyprus. With a passion for real estate and a commitment to excellence, we offer a diverse portfolio of high-quality residential developments that redefine modern living.

Introducing ERA – A New Standard in Urban Living

Nestled in the heart of Paphos, ERA is a boutique residential development offering a fresh perspective on contemporary lifestyle residences. Comprising 24 modern apartments, ERA has been thoughtfully designed to provide comfort, convenience, and elegance to its residents.

High-End Finishes & F...

### Property Info

### Plot / Area Info

Covered Area **114**  
Covered Veranda **29**  
Floor Number **4**

### Additional info

Reference Number **235345**  
Property type **Apartment**  
Condition **Brand New**  
Bathrooms **1**

### Amenities

### Location

**Location:** Empa Region: **Paphos**

## Price: €340 000 + VAT

VAT for this property is **€17,000** or **€64,600**. VAT usually is 19%. If it is your first purchase of property, you can have VAT reduced to 5% for the first 150sq.m. of the property.

VAT	<b>Excluded</b>	Title transfer fee	<b>None</b>	Common expenses	<b>None</b>
		Price per SQM	<b>€2 982.00/m<sup>2</sup></b>		

## Representative: MySpace

Registration number	<b>229/E</b>	Email	<b>myspace.cyprus@gmail.com</b>
License number	<b>1047</b>	Legal name	<b>MYSPLACE Real Estate/ A.SP.Thinkrealty ltd</b>
Phone: <b>+35795129336, +35799409010</b>			

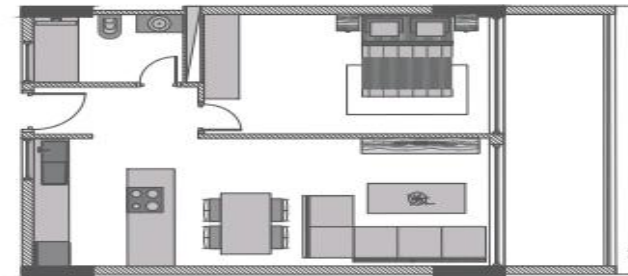
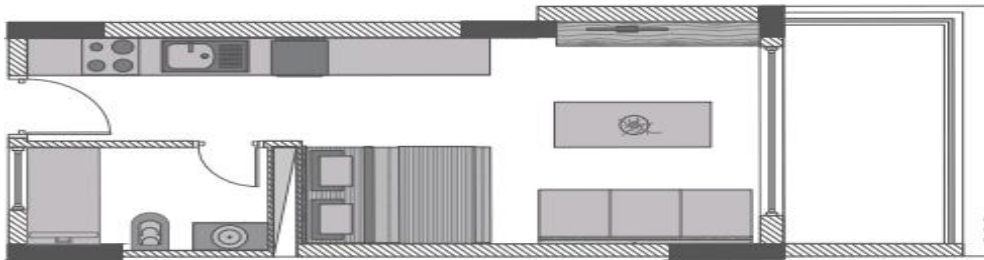
## Price change history

€340 000 on Feb 25, 2025



Risera Properties | 11

Risera Properties | 12



Risera Properties | 14

