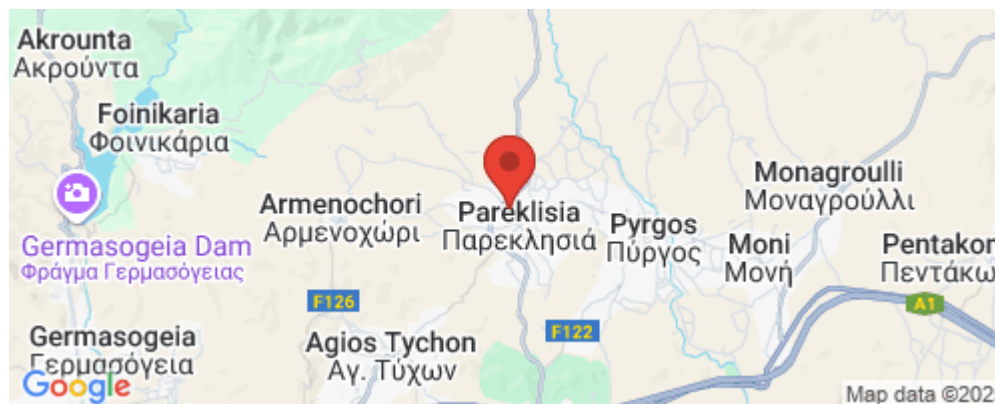


2 Bedroom Apartment for Sale in Parekklesia, Limassol District

Two Bedroom Penthouse For Sale in Parekklesia, Limassol – Title Deeds (New Build Process) The project will be composed of 3 blocks, each with eight apartments, including 2 penthouses in each block with roof gardens. The location is in a quiet residential area and a short drive from the beach and highway. - Master bedroom with fitted wardrobes and en-suite - One bedroom with fitted wardrobes - Open plan living – dining and kitchen area - Family Bathroom - Roof Garden - Unfurnished - Parking - Storage - Internal area 78 m² - Covered veranda 20 m² - ...



Property Info

Plot / Area Info

Covered Area **78**

Additional info

Reference Number **plu068n2p**
 Property type **Apartment**
 Condition **Brand New**
 Bathrooms **2**

Amenities

Location

Location: Parekklesia Region: **Limassol**
Coordinates: **34.7458 / 33.1583**

Price: €345 000 + VAT

VAT for this property is **€17,250** or **€65,550**. VAT usually is 19%. If it is your first purchase of property, you can have VAT reduced to 5% for the first 150sq.m. of the property.

VAT	Excluded	Title transfer fee	None	Common expenses	None
		Price per SQM	€4 423.00/m²		

Representative: Emerald Property Consultants

Registration number	845	Email	info@cyprusemerald.com
License number	329/E	Legal name	N/A
Phone: +35723080080			

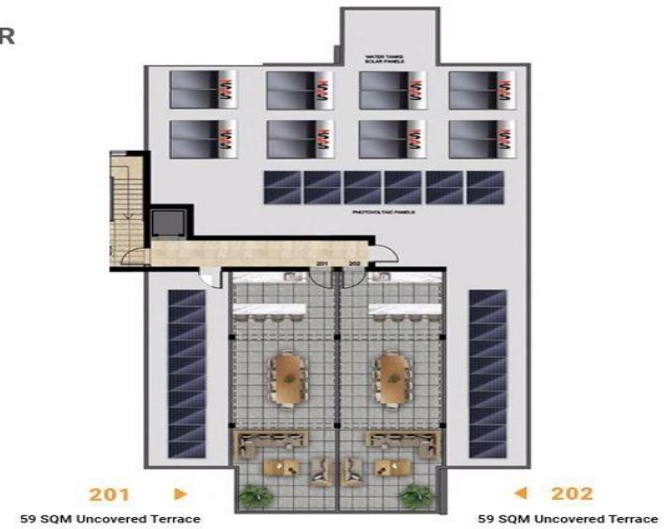
Price change history

€345 000 on Mar 18, 2025





ROOF FLOOR



2ND FLOOR

▶ 204
1 Bedroom
1 Bathroom
55 SQM Internal Area
19 SQM Covered Veranda

◀ 203
2 Bedrooms
2 Bathrooms
88 SQM Internal Area
13 SQM Covered Veranda

▶ 201
2 Bedrooms
2 Bathrooms
78.5 SQM Internal Area
20 SQM Covered Veranda

◀ 202
2 Bedrooms
2 Bathrooms
78.5 SQM Internal Area
20 SQM Covered Veranda

