

2 Bedroom Apartment for Sale in Drosia, Larnaca District

Unique, Two Bedroom Apartment with Terrace for sale in Drosia area, Larnaca. A short drive to Larnaca Town Centre, the beach and the harbour. A 7-minute drive to the airport. Great location, as all amenities, such as Greek and English schools, major supermarkets, entertainment and sporting facilities, are within close proximity. The lovely residential neighborhood is quiet and family orientated surrounded by large luxury houses and residential properties.



Apartment for sale in Drosia area, Larnaca Town. The apartment is on the third floor. It consists of an open plan kitchen, living room, dining area, covered veranda (front side), a main bathroom with shower, two bedrooms and an en...

Property Info

Covered Area **79**
Air Conditioning **All rooms, Yes**

Plot / Area Info

Parking **Covered, Yes**

Additional info

Reference Number **51060**
Property type **Apartment**
Condition **Brand New**
Bathrooms **2**

Amenities

- Guest WC

Location

Location: Drosia Region: **Larnaca**
Coordinates: **34.920608 / 33.618078**

Price: €310 000 + VAT

VAT for this property is **€15,500** or **€58,900**. VAT usually is 19%. If it is your first purchase of property, you can have VAT reduced to 5% for the first 150sq.m. of the property.

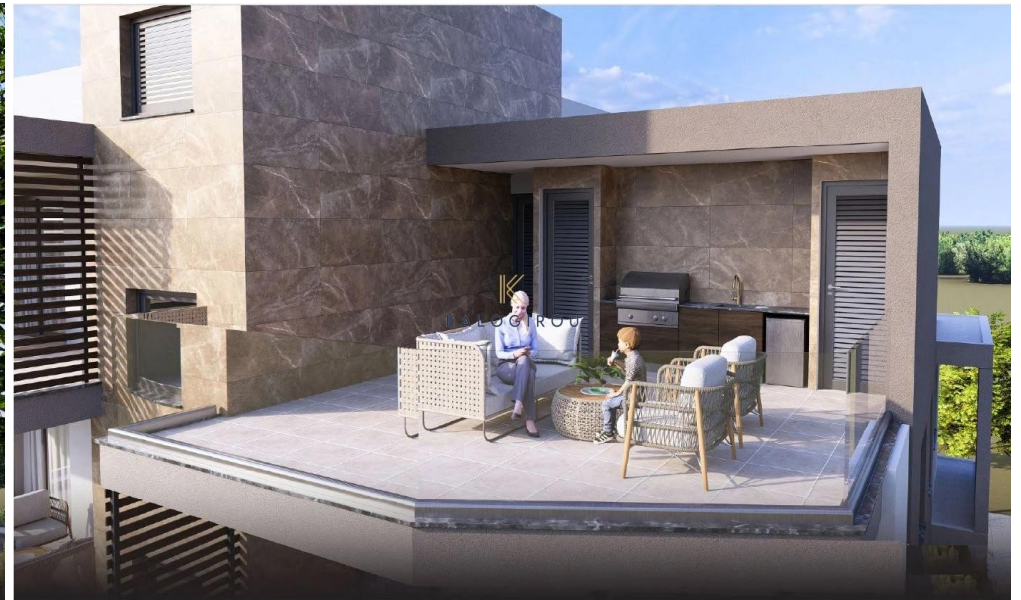
VAT	Excluded	Title transfer fee	None	Common expenses	None
		Price per SQM	€3 924.00/m²		

Representative: Kalogirou Real Estate

Registration number	1104	Email	info@kalogirourealestate.com
License number	569/E	Legal name	N/A
Phone: +35724003723			

Price change history

€310 000 on Mar 22, 2025





3rd FLOOR PLAN

Apartment No.	Bedrooms	Bathrooms	Internal covered Area (m2)	Covered balconies (m2)	Uncovered balconies (m2)	Roof garden (m2)	Common areas(m2)	Parking	Storage
301	2	2	78.9	19.2	-	-	27	YES	-
302	2	2	78.8	26	27.5	10.7	-	YES	YES



4th FLOOR PLAN

Apartment No.	Bedrooms	Bathrooms	Internal covered Area (m2)	Covered balconies (m2)	Uncovered balconies (m2)	Roof garden (m2)	Common areas(m2)	Parking	Storage
401	2	2	79.1	27.9	42.3	10.7	27	YES	YES



GROUND FLOOR PLAN