

6+ Bedroom House for Sale in Pegeia, Paphos District

The project is just a short drive from Paphos finest sandy beaches. The strategic location perfectly marries tranquility with convenience, allowing residents to enjoy a calm and luxurious lifestyle without being far from essential amenities and experiences.



At project, we offer more than just homes; we offer an experience. Every aspect of this exclusive enclave, from the design to the location, is curated to provide a lifestyle steeped in luxury and intimately connected with nature. The concept revolves around providing a harmonious blend of comfort, luxury, and stunning aesthetics, all within a backdrop of unparalleled natural beauty.

- 17 villas — 4 to 6 bedrooms

Price: €2 835 000 + VAT

VAT	Excluded	Title transfer fee	None	Common expenses	None
		Price per SQM	N/A		

Representative: RealDeal Estates

Registration number	1311	Email	info@realdeal.cy
License number	347/E	Legal name	Esperia Estates (Limassol-Paphos) Limited
Phone: +35725255505, +35794001333			

Price change history

€2 835 000 on Apr 8, 2025







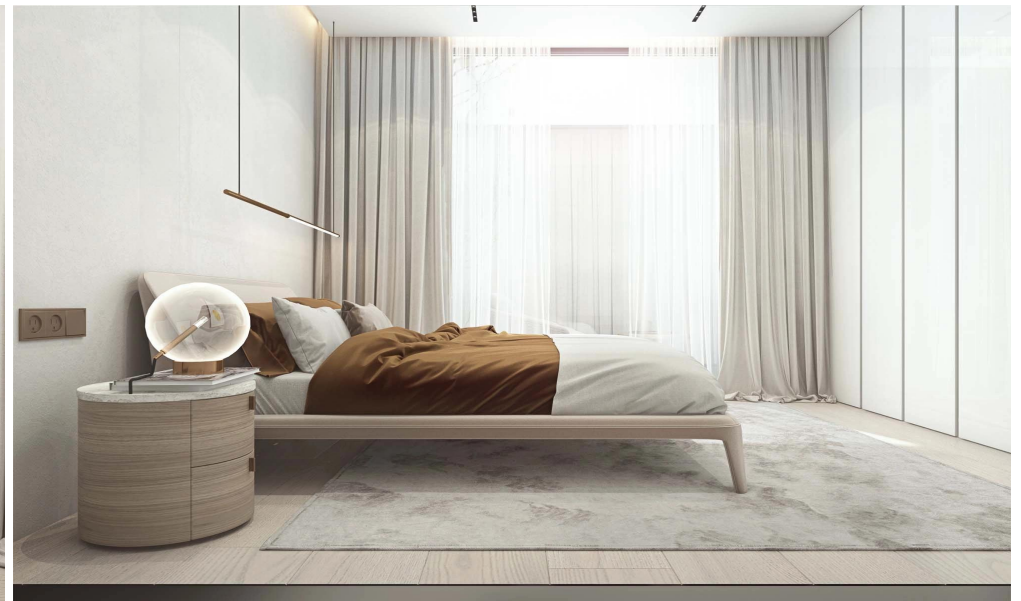
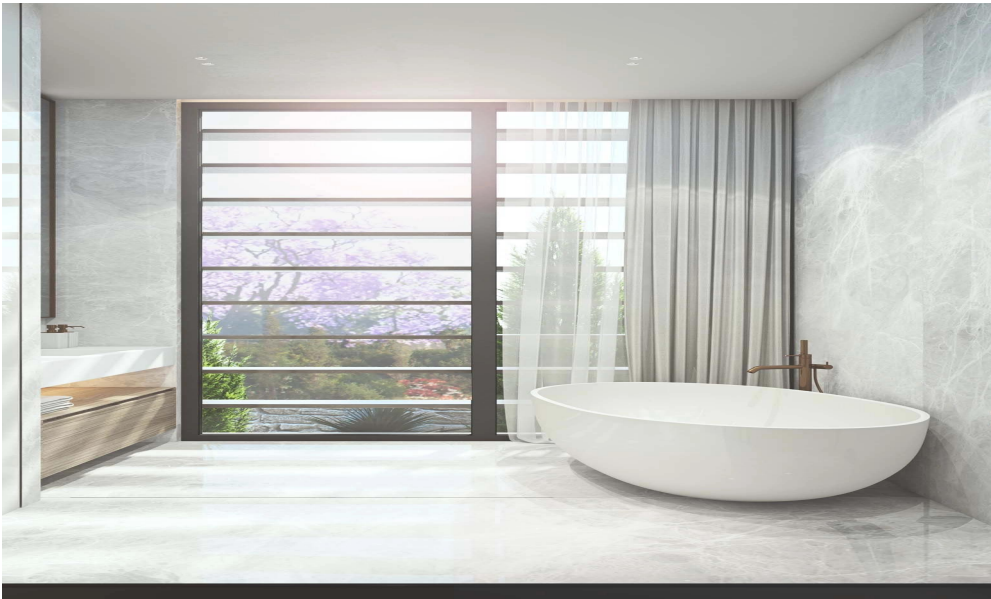






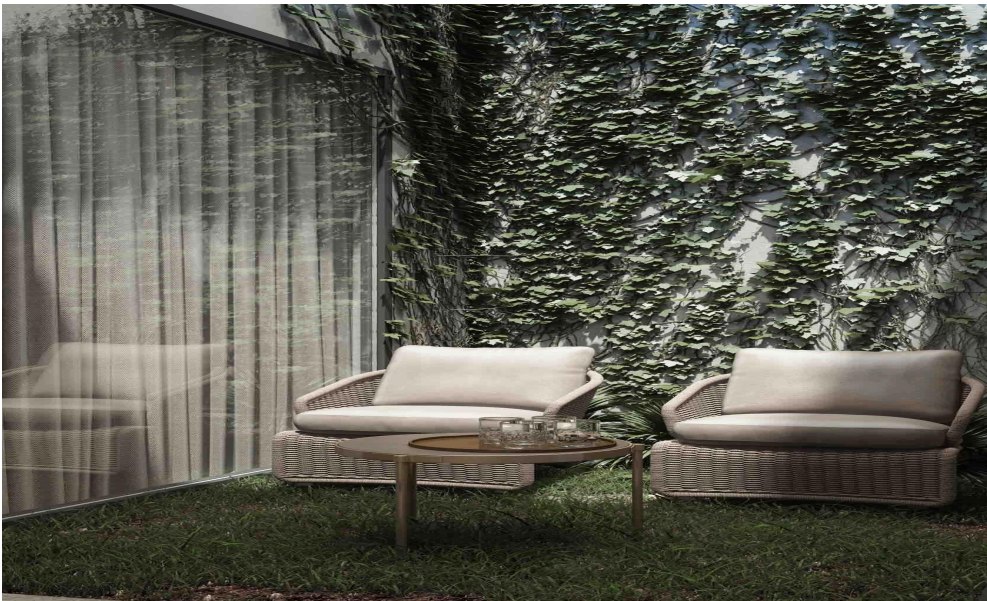










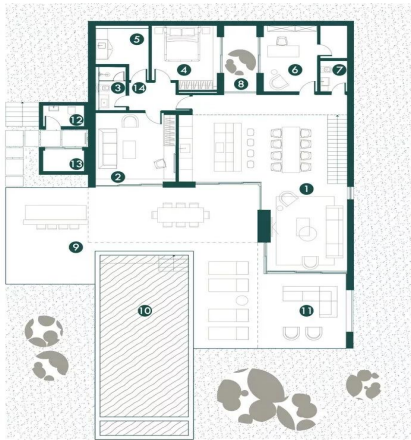




CAMELLIA

6 bedrooms 514 m²

ground floor



1.Kitchen / Living room	69 m ²	8.Courtyard	7 m ²
2.Guests bedroom	18 m ²	9.BBQ & Outdoor bar	100 m ²
3.Bathroom	4 m ²	10.Infinity pool (10'x5.5 m)	45 m ²
4.Guests bedroom	13 m ²	11.Lounged lounge area	19 m ²
5.Laundry	7 m ²	12.Road WC	3 m ²
6.Office/Wineroom/Storage	15 m ²	13.Plant room	3 m ²
7.Toilet	3 m ²	14.Hall	5 m ²
Total		311 m ²	

CAMELLIA

6 bedrooms 514 m²

1st floor



1.Entrance area	15 m ²	8.Lounged parking	56 m ²
2.Master bedroom	25 m ²	9.Storage	4 m ²
3.Master bathroom	9 m ²	10.Mechanical room	4 m ²
4.Bedroom	16 m ²	11.Covered entrance	15 m ²
5.Bathroom	5 m ²	12.Entrance foyer	18 m ²
6.Bedroom	15 m ²	13.Bathroom	3 m ²
7.Covered balcony	18 m ²		
Total		203 m ²	