

## 6+ Bedroom House for Sale in Pegeia, Paphos District

The project is just a short drive from Paphos finest sandy beaches. The strategic location perfectly marries tranquility with convenience, allowing residents to enjoy a calm and luxurious lifestyle without being far from essential amenities and experiences.



At project, we offer more than just homes; we offer an experience. Every aspect of this exclusive enclave, from the design to the location, is curated to provide a lifestyle steeped in luxury and intimately connected with nature. The concept revolves around providing a harmonious blend of comfort, luxury, and stunning aesthetics, all within a backdrop of unparalleled natural beauty.

- 17 villas — 4 to 6 bedrooms

**Price: €2 835 000 + VAT**

VAT	<b>Excluded</b>	Title transfer fee Price per SQM	<b>None</b> <b>N/A</b>	Common expenses	<b>None</b>
-----	-----------------	-------------------------------------	---------------------------	-----------------	-------------

## Representative: RealDeal Estates

Registration number	<b>1311</b>	Email	<b>info@realdeal.cy</b>
License number	<b>347/E</b>	Legal name	<b>Esperia Estates (Limassol-Paphos) Limited</b>
Phone: <b>+35725255505, +35794001333</b>			

## Price change history

€2 835 000 on Apr 8, 2025













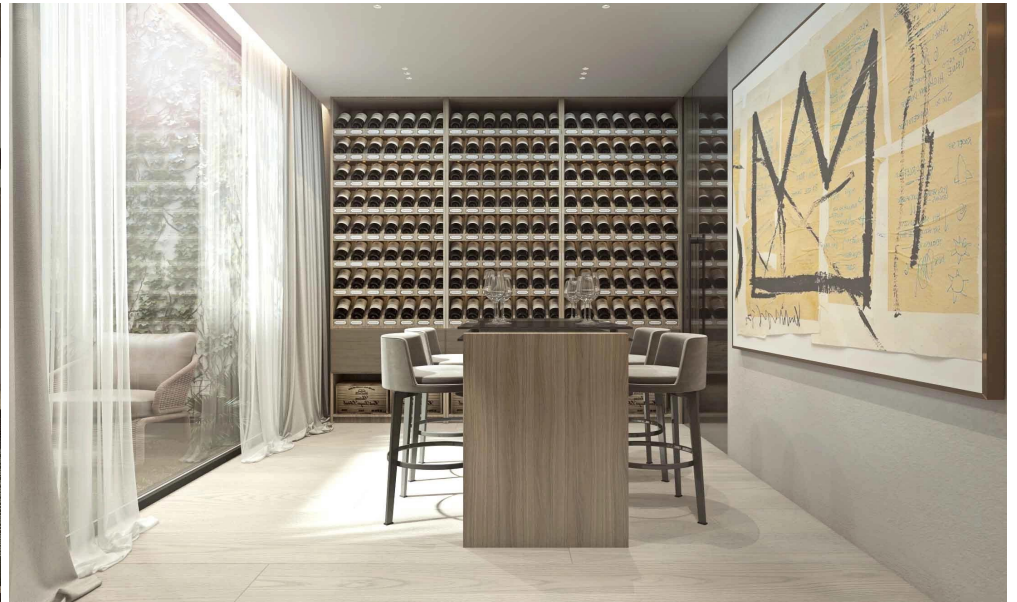




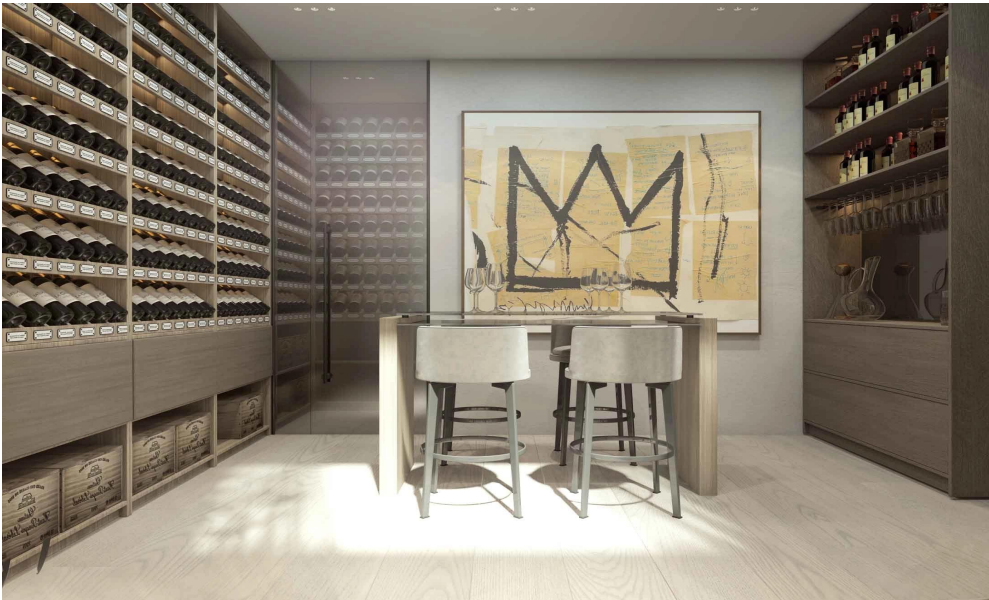








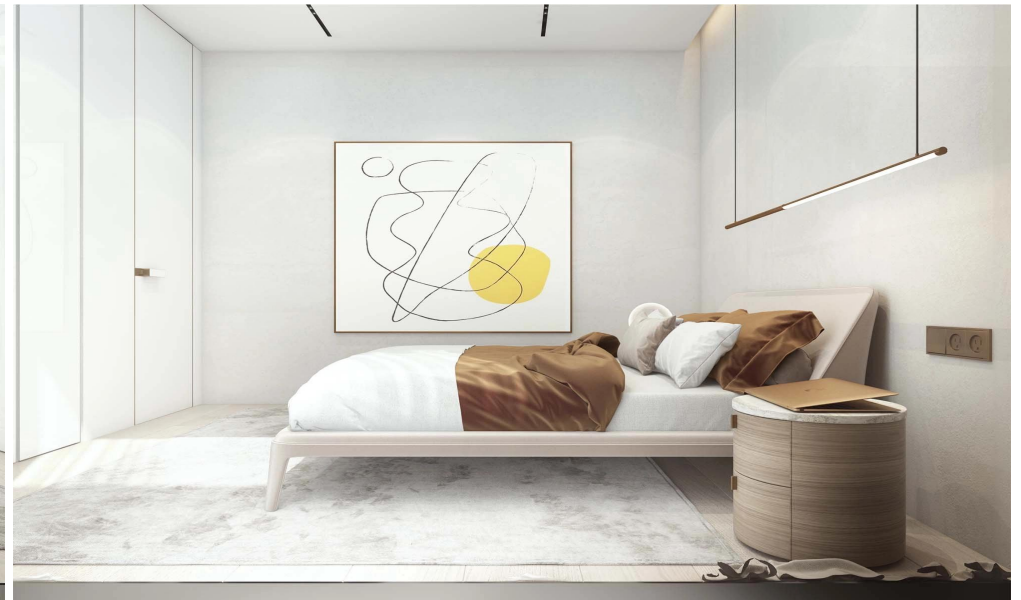
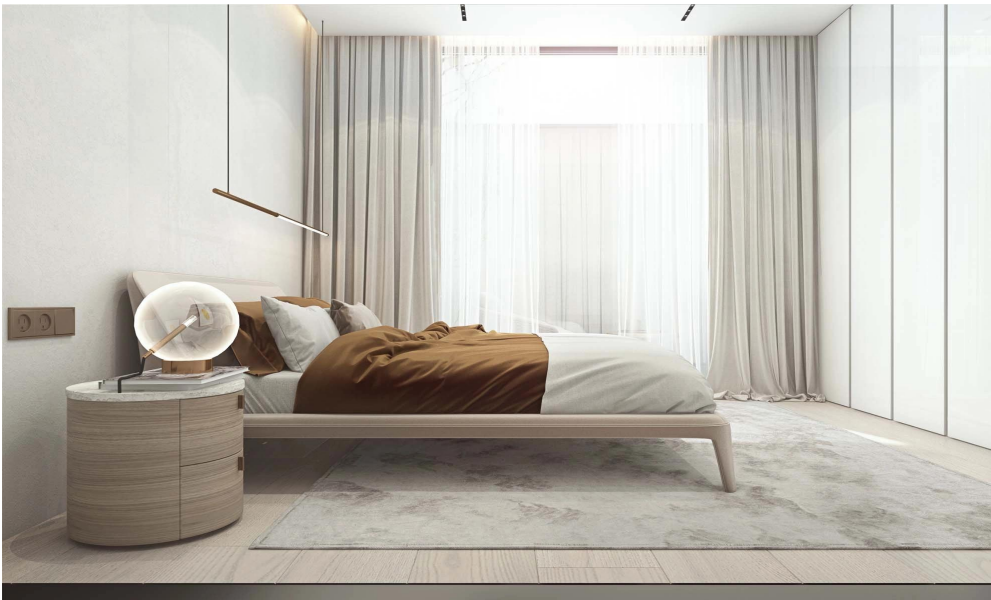
























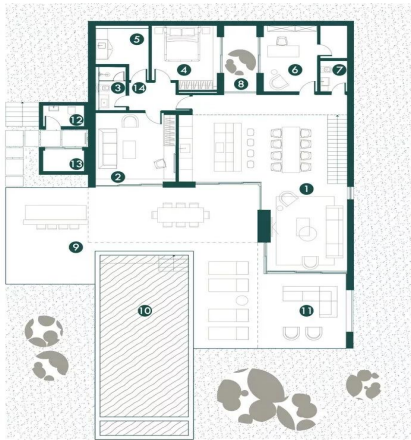




CAMELLIA

6 bedrooms 514 m<sup>2</sup>

ground floor



1.Kitchen / Living room	69 m <sup>2</sup>	8.Courtyard	7 m <sup>2</sup>
2.Guests bedroom	18 m <sup>2</sup>	9.BBQ & Outdoor bar	100 m <sup>2</sup>
3.Bathroom	4 m <sup>2</sup>	10.Infinity pool (10'x5.5 m)	45 m <sup>2</sup>
4.Guests bedroom	13 m <sup>2</sup>	11.Lounged lounge area	19 m <sup>2</sup>
5.Laundry	7 m <sup>2</sup>	12.Road WC	3 m <sup>2</sup>
6.Office/Wineroom/Storage	15 m <sup>2</sup>	13.Plant room	3 m <sup>2</sup>
7.Toilet	3 m <sup>2</sup>	14.Hall	5 m <sup>2</sup>
Total		311 m <sup>2</sup>	

CAMELLIA

6 bedrooms 514 m<sup>2</sup>

1st floor



1.Entrance area	15 m <sup>2</sup>	8.Lounged parking	56 m <sup>2</sup>
2.Master bedroom	25 m <sup>2</sup>	9.Storage	4 m <sup>2</sup>
3.Master bathroom	9 m <sup>2</sup>	10.Mechanical room	4 m <sup>2</sup>
4.Bedroom	16 m <sup>2</sup>	11.Covered entrance	15 m <sup>2</sup>
5.Bathroom	5 m <sup>2</sup>	12.Entrance foyer	18 m <sup>2</sup>
6.Bedroom	15 m <sup>2</sup>	13.Bathroom	3 m <sup>2</sup>
7.Covered balcony	18 m <sup>2</sup>		
Total		203 m <sup>2</sup>	