


## 2 Bedroom Apartment for Sale in Limassol District

This esteemed residential building is located in the area of Kato Polemidia and presents a supreme opportunity for both homeowners and investors. 

This project was designed with an emphasis on high-quality construction and contemporary aesthetics. Thoughtful attention to detail ensures that the interiors reflect modern living standards while providing residents with both comfort and style. This project is ideally suited for both investors looking to capitalize on the growing real estate market in Limassol and homeowners seeking a high-quality living environment.

### Property Info

|                        |           |
|------------------------|-----------|
| Covered Veranda        | <b>20</b> |
| Floor Number           | <b>5</b>  |
| Total Number of Floors | <b>5</b>  |
| Energy Efficiency      | <b>A</b>  |

### Plot / Area Info

Parking **Covered, Yes**

### Additional info

|                  |                           |
|------------------|---------------------------|
| Reference Number | <b>1350</b>               |
| Property type    | <b>Apartment</b>          |
| Condition        | <b>Under Construction</b> |
| Bathrooms        | <b>2</b>                  |

### Amenities

- Parking

### Location

Region: **Limassol**  
 Coordinates: **34.684626920551 / 32.997989053788**

**Price: €305 000 + VAT**

|     |                 |                                     |                     |                 |             |
|-----|-----------------|-------------------------------------|---------------------|-----------------|-------------|
| VAT | <b>Excluded</b> | Title transfer fee<br>Price per SQM | <b>None<br/>N/A</b> | Common expenses | <b>None</b> |
|-----|-----------------|-------------------------------------|---------------------|-----------------|-------------|

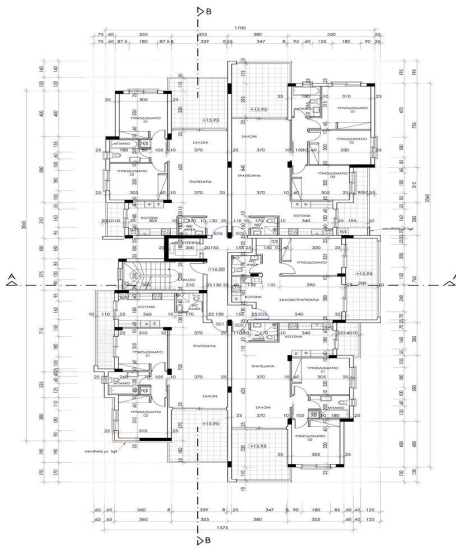
**Representative: RealDeal Estates**

|  |              |            |  |
|--|--------------|------------|--|
| Registration number                      | <b>1311</b>  | Email      | <b>info@realdeal.cy</b>                          |
| License number                           | <b>347/E</b> | Legal name | <b>Esperia Estates (Limassol-Paphos) Limited</b> |
| Phone: <b>+35725255505, +35794001333</b> |              |            |  |

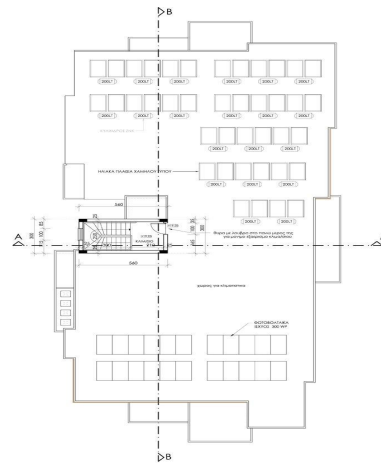
**Price change history**

€290 000 on Apr 8, 2025  
€305 000 on Jan 23, 2026

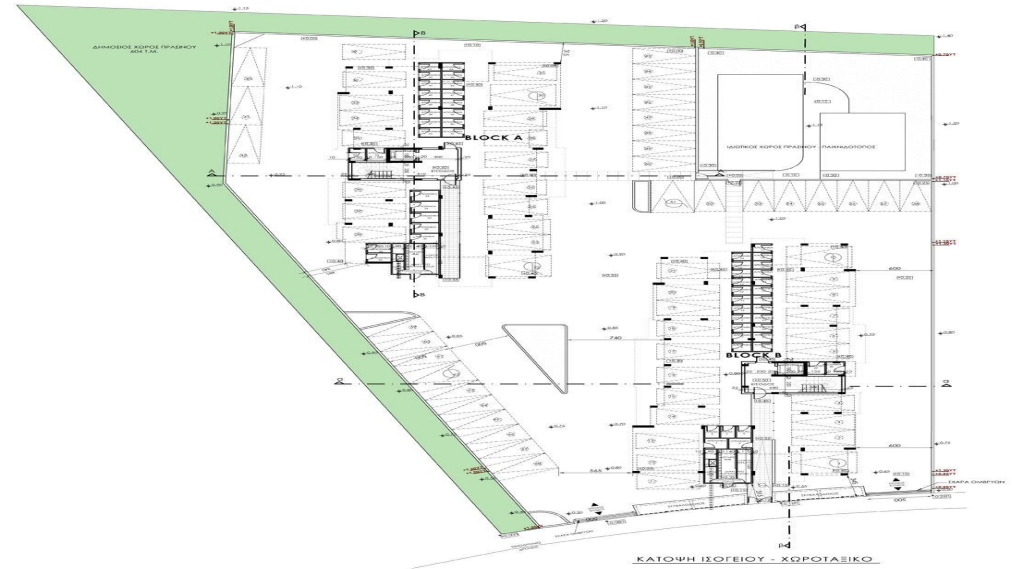




ΚΑΤΩΦΗ ΠΕΜΠΤΟΥ ΟΡΟΦΟΥ  
ΠΟΛΥΚΑΤΟΙΚΙΑ BLOCK A



ΚΑΤΩΦΗ ΟΡΟΦΗΣ  
ΠΟΛΥΚΑΤΟΙΚΙΑ BLOCK A



ΚΑΤΩΦΗ ΙΣΟΓΕΙΟΥ - ΧΩΡΟΤΑΞΙΚΟ