

## 2 Bedroom Apartment for Sale in Limassol - Mesa Geitonia

This project represents more than just a place to live or work; it's the beginning of a new chapter in urban living. Situated at the doorstep of Limassol's vibrant city center, this development offers residents and professionals alike the perfect balance between accessibility and tranquility. With thoughtfully designed residential spaces and modern amenities, it is not just a destination; it's the starting point for a life of convenience, comfort, and success. This is a mixed-use development project comprising both residential and commercial buildings. The residential zone offers 16 apartments ranging from 73.00 m2 to 140.20 m2. The commercial development features a four... ✖

### Property Info

Covered Veranda	<b>25</b>
Uncovered Veranda	<b>3</b>
Floor Number	<b>1</b>
Total Number of Floors	<b>4</b>
Energy Efficiency	<b>A</b>

### Plot / Area Info

Pool	<b>Common, Yes</b>
Parking	<b>Covered, Yes</b>

### Additional info

Reference Number	<b>2507</b>
Property type	<b>Apartment</b>
Condition	<b>Under Construction</b>
Bathrooms	<b>2</b>

### Amenities

- Parking

### Location

**Location:** Limassol - Mesa Geitonia      Region: **Limassol**  
 Coordinates: **34.699927763274 / 33.045061823012**

**Price: €458 380 + VAT**

VAT	<b>Excluded</b>	Title transfer fee Price per SQM	<b>None N/A</b>	Common expenses	<b>None</b>
-----	-----------------	-------------------------------------	---------------------	-----------------	-------------

**Representative: RealDeal Estates**

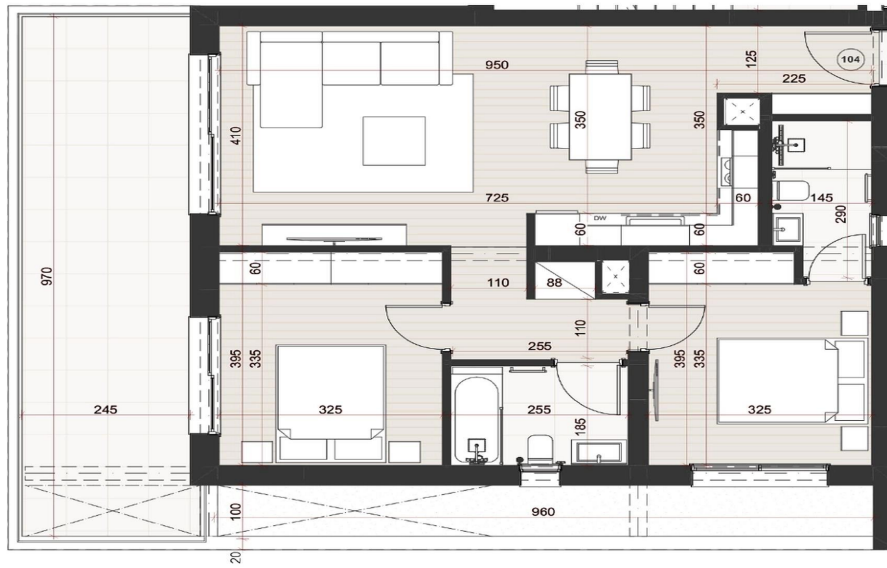
Registration number	<b>1311</b>	Email	<b>info@realdeal.cy</b>
License number	<b>347/E</b>	Legal name	<b>Esperia Estates (Limassol-Paphos) Limited</b>
Phone: <b>+35725255505, +35794001333</b>			

**Price change history**

€458 380 on Apr 8, 2025







Ground Floor

1st Floor

