

## 2 Bedroom Apartment for Sale in Mouttagiaka, Limassol District

Two-bedroom penthouse a304, with a living area of 88.7 m<sup>2</sup> and a 86 m<sup>2</sup> roof garden, is located on the third floor of a three-storey building in Block A.



The project is split into different zones. There are 28 exquisite apartments, each with one, two, or three bedrooms, within separate modern blocks. For residents who prefer detached houses, our project additionally offers 7 luxurious villas with additional amenities to upraise the level of your living. More than half of the plot area is allocated for landscaping of the territory – with walking zones, recreation, picnics, sports and entertainment, playgrounds.

Our experience in differentiated projects allowed the ergonom...

### Property Info

Covered Area	<b>108</b>
Covered Veranda	<b>19</b>
Uncovered Veranda	<b>10</b>
Floor Number	<b>3</b>
Total Number of Floors	<b>3</b>
Energy Efficiency	<b>A</b>

### Plot / Area Info

Pool	<b>Common, Yes</b>
Parking	<b>Covered, Yes</b>

### Additional info

Reference Number	<b>2534</b>
Property type	<b>Apartment</b>
Condition	<b>Brand New</b>
Bathrooms	<b>1</b>

### Amenities

### Location



- Roof Garden

**Location:** Mouttagiaka

Region: **Limassol**

Coordinates: **34.712505063139 / 33.108651623254**

[www.index.cy](http://www.index.cy) - All Cyprus Real Estate

## Price: €864 000 + VAT

VAT for this property is **€43,200** or **€164,160**. VAT usually is 19%. If it is your first purchase of property, you can have VAT reduced to 5% for the first 150sq.m. of the property.

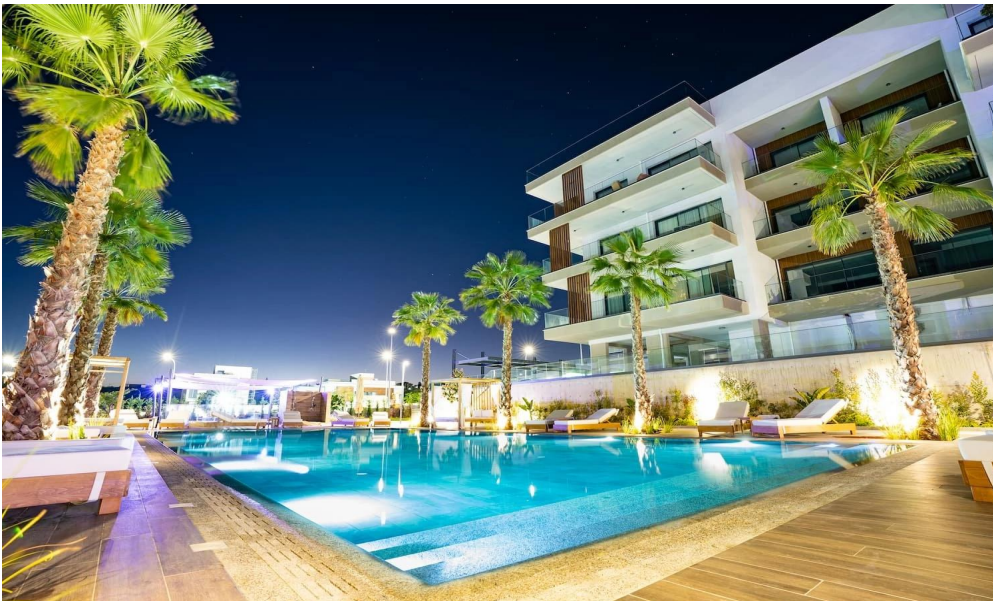
VAT	<b>Excluded</b>	Title transfer fee	<b>None</b>	Common expenses	<b>None</b>
		Price per SQM	<b>€8 000.00/m²</b>		

## Representative: RealDeal Estates

Registration number	<b>1311</b>	Email	<b>info@realdeal.cy</b>
License number	<b>347/E</b>	Legal name	<b>Esperia Estates (Limassol-Paphos) Limited</b>
Phone: <b>+35725255505, +35794001333</b>			

## Price change history

€864 000 on Apr 8, 2025







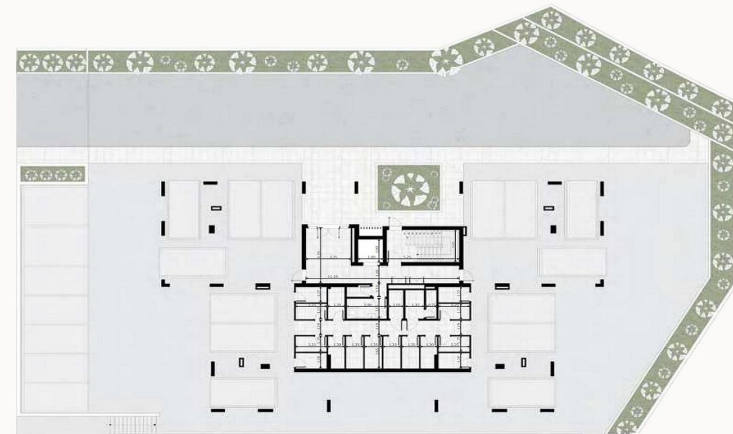


3-rd Floor



BLOCKS A&B

Ground floor layout



3 floor layout

