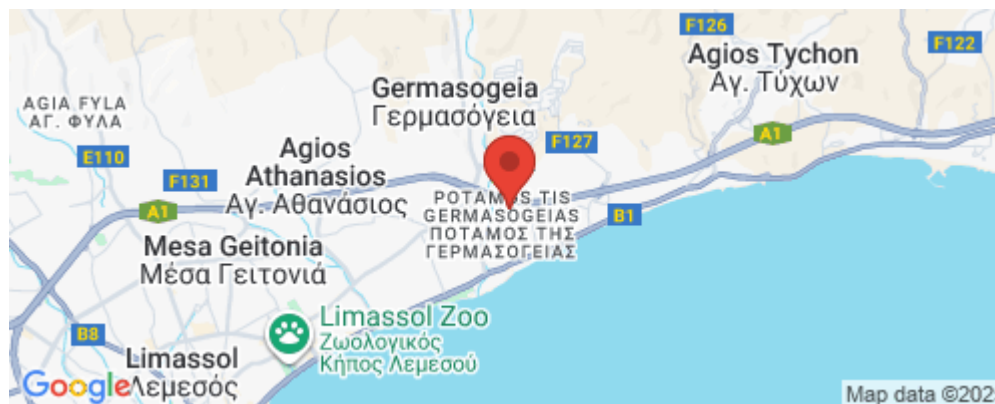


## 54m<sup>2</sup> Apartment for Sale in Germasogeia, Limassol District

Each luxury apartment is set beautifully with breathtaking panoramic city views. Meticulously designed with smart space arrangements that deliver pure comfort and style. Residents will enjoy the opulence of spacious living areas with floor to ceiling windows that allow natural light to flow through the space giving it that sense of freedom. These homes are designed with the best high quality materials and high standards of finish, where premium aesthetics fuse with elevated comforted high spec functionality. Each unique penthouse boasts effortless luxury that is further enhanced by uncompromised panoramic views of the city that will definitely inspire your body, mind and soul. Welcome to ...



### Property Info

Covered Area	<b>54</b>
Covered Veranda	<b>9</b>
Floor Number	<b>1</b>
Total Number of Floors	<b>4</b>
Energy Efficiency	<b>A</b>
Heating	<b>Underfloor Heating, Yes</b>

### Plot / Area Info

Pool	<b>Common, Yes</b>
Parking	<b>Covered, Yes</b>

### Additional info

Reference Number	<b>2617</b>
Property type	<b>Apartment</b>
Condition	<b>Under Construction</b>
Bathrooms	<b>1</b>

### Amenities

- Parking

### Location

**Location:** Germasogeia  
Coordinates: **34.705105326543 / 33.093008995056**

Region: **Limassol**

## Price: €350 000 + VAT

VAT for this property is **€17,500** or **€66,500**. VAT usually is 19%. If it is your first purchase of property, you can have VAT reduced to 5% for the first 150sq.m. of the property.

VAT	<b>Excluded</b>	Title transfer fee	<b>None</b>	Common expenses	<b>None</b>
		Price per SQM	<b>€6 481.00/m²</b>		

## Representative: RealDeal Estates

Registration number	<b>1311</b>	Email	<b>info@realdeal.cy</b>
License number	<b>347/E</b>	Legal name	<b>Esperia Estates (Limassol-Paphos) Limited</b>
Phone: <b>+35725255505, +35794001333</b>			

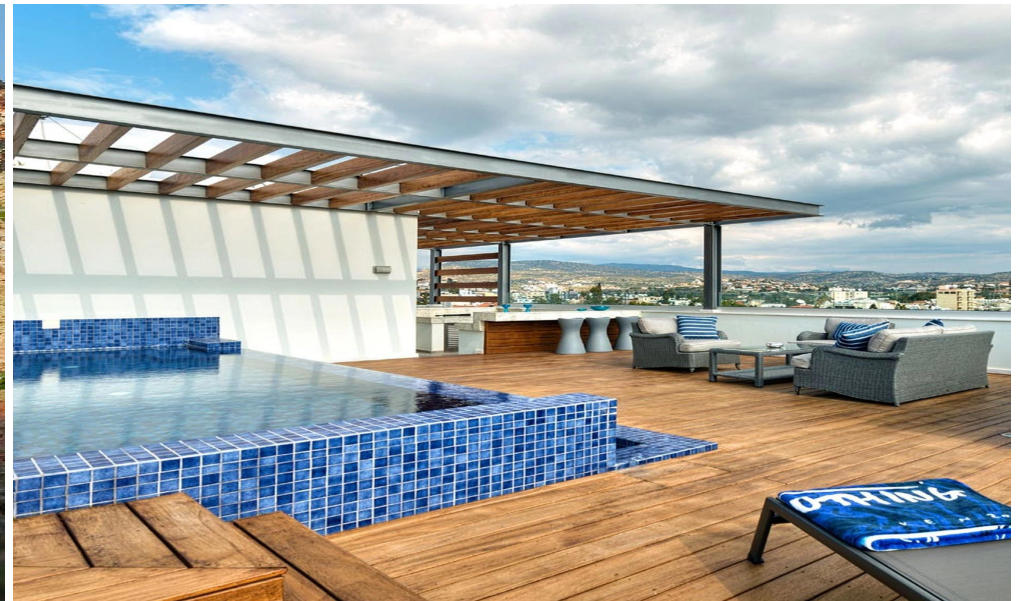
## Price change history

€350 000 on Apr 8, 2025

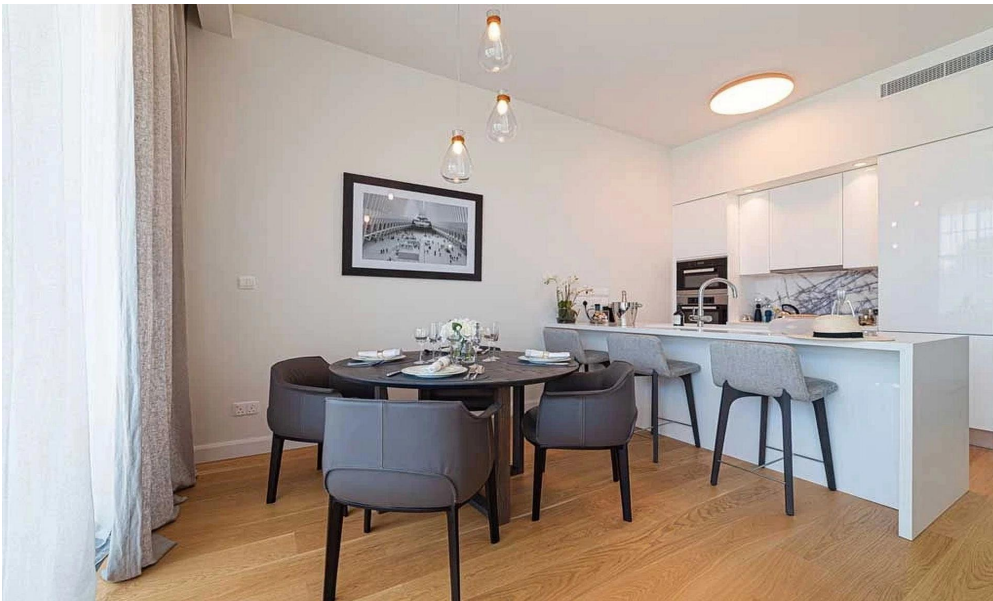












ground floor



block B  
APARTMENT B102

