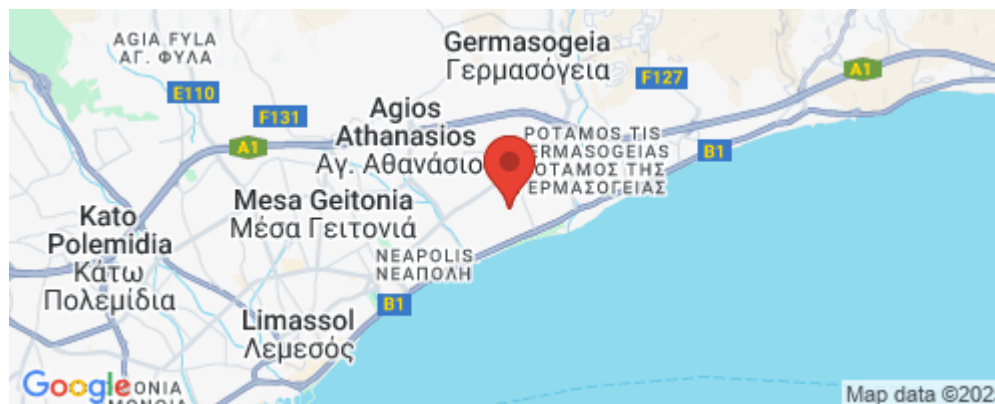


## 2 Bedroom Apartment for Sale in Potamos Germasogeias, Limassol District

This residential complex is located in a thriving location, a central spot in the heart of Limassol's tourist area, bustling with vibrancy, incredible shopping and an endless array of upscale restaurants. The Mediterranean lifestyle comes easy in this city. It consists of 3 blocks; each block boasts 14 luxurious spacious apartments and 2 penthouses with private swimming pools. Its amenities are not just added accessories but are well thought out spaces, essential to a unique lifestyle. Every detail has been carefully designed to bring home the best of Mediterranean living with comfort and style. This complex will complement your taste for fine living and energize a thriving new destinati...



### Property Info

Covered Area	<b>115</b>
Covered Veranda	<b>24</b>
Floor Number	<b>3</b>
Total Number of Floors	<b>5</b>
Energy Efficiency	<b>A</b>
Heating	<b>Underfloor Heating, Yes</b>
Air Conditioning	<b>All rooms, Yes</b>

### Plot / Area Info

Pool	<b>Common, Yes</b>
Parking	<b>Covered, Yes</b>

### Additional info

Reference Number	<b>2730</b>
Property type	<b>Apartment</b>
Condition	<b>Under Construction</b>
Bathrooms	<b>2</b>

### Amenities

- Parking

### Location

**Location:** Potamos Germasogeias  
**Coordinates:** **34.696231825733 / 33.077280521393**

Region: **Limassol**

## Price: €940 000 + VAT

VAT for this property is **€47,000** or **€178,600**. VAT usually is 19%. If it is your first purchase of property, you can have VAT reduced to 5% for the first 150sq.m. of the property.

VAT	<b>Excluded</b>	Title transfer fee	<b>None</b>	Common expenses	<b>None</b>
		Price per SQM	<b>€8 174.00/m²</b>		

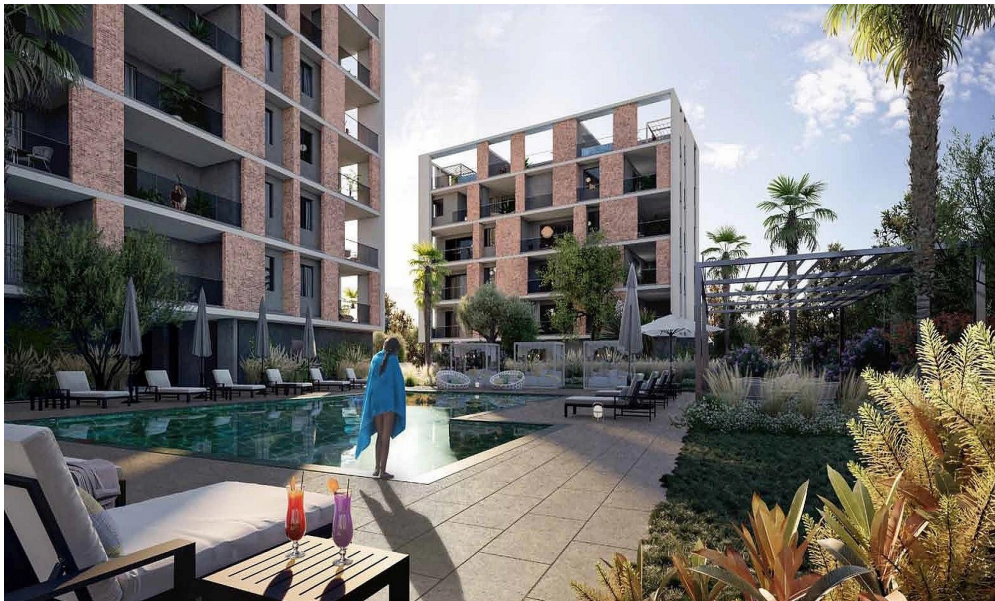
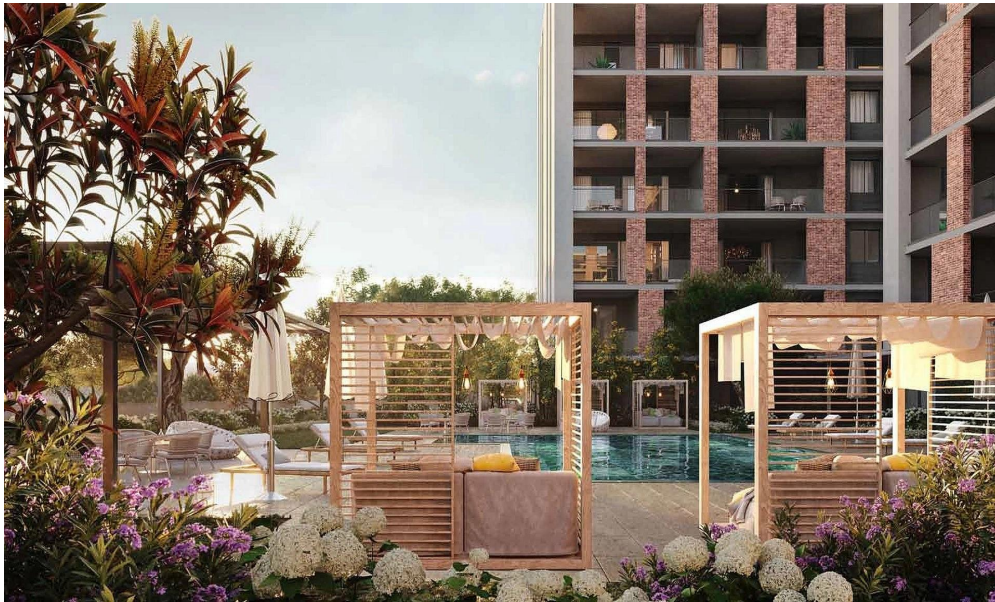
## Representative: RealDeal Estates

Registration number	<b>1311</b>	Email	<b>info@realdeal.cy</b>
License number	<b>347/E</b>	Legal name	<b>Esperia Estates (Limassol-Paphos) Limited</b>
Phone: <b>+35725255505, +35794001333</b>			

## Price change history

€940 000 on Apr 8, 2025





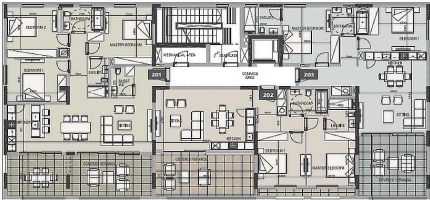




•block b

floor 2

UNIT N°	TOTAL AREA M <sup>2</sup>
201	170.89
202	134.45
203	129.05



floor 3

UNIT N°	TOTAL AREA M <sup>2</sup>
301	170.89
302	134.45
303	129.05

