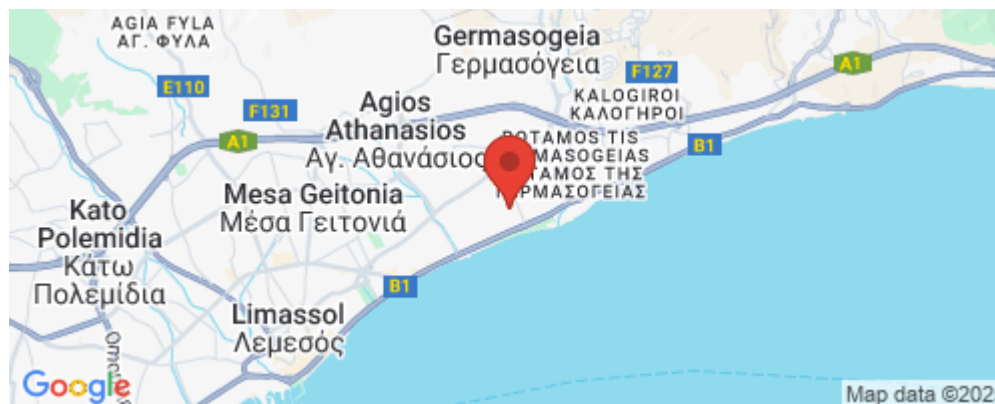


## 1 Bedroom Apartment for Sale in Germasogeia, Limassol District

A magnificent project in the heart of an exclusive high end area that offers an opulent lifestyle with tranquillity and serenity. Each luxurious apartment is created to be enriched by your vision, using floor to ceiling windows looking out to breathtaking views of the vibrant city and neighbouring hills as your backdrop. Experience a comfortable sophisticated home kitted out with those homely touches and well thought out details. Each apartment provides an intelligent and functional design that inspires that feeling of pure luxury. All the residences welcome you with contemporary gourmet quality kitchen layouts, living and dining areas designed perfectly for food preparation and entertain...



### Property Info

Covered Area	<b>69</b>
Covered Veranda	<b>12</b>
Floor Number	<b>4</b>
Total Number of Floors	<b>5</b>
Energy Efficiency	<b>A</b>
Heating	<b>Underfloor Heating, Yes</b>
Air Conditioning	<b>All rooms, Yes</b>

### Plot / Area Info

Pool	<b>Common, Yes</b>
Parking	<b>Covered, Yes</b>

### Additional info

Reference Number	<b>2747</b>
Property type	<b>Apartment</b>
Condition	<b>Under Construction</b>
Bathrooms	<b>1</b>

### Amenities

- Parking

### Location

**Location:** Germasogeia  
**Coordinates:** **34.695270325665 / 33.079179507433**

Region: **Limassol**

## Price: €640 000 + VAT

VAT for this property is **€32,000** or **€121,600**. VAT usually is 19%. If it is your first purchase of property, you can have VAT reduced to 5% for the first 150sq.m. of the property.

VAT	<b>Excluded</b>	Title transfer fee	<b>None</b>	Common expenses	<b>None</b>
		Price per SQM	<b>€9 275.00/m<sup>2</sup></b>		

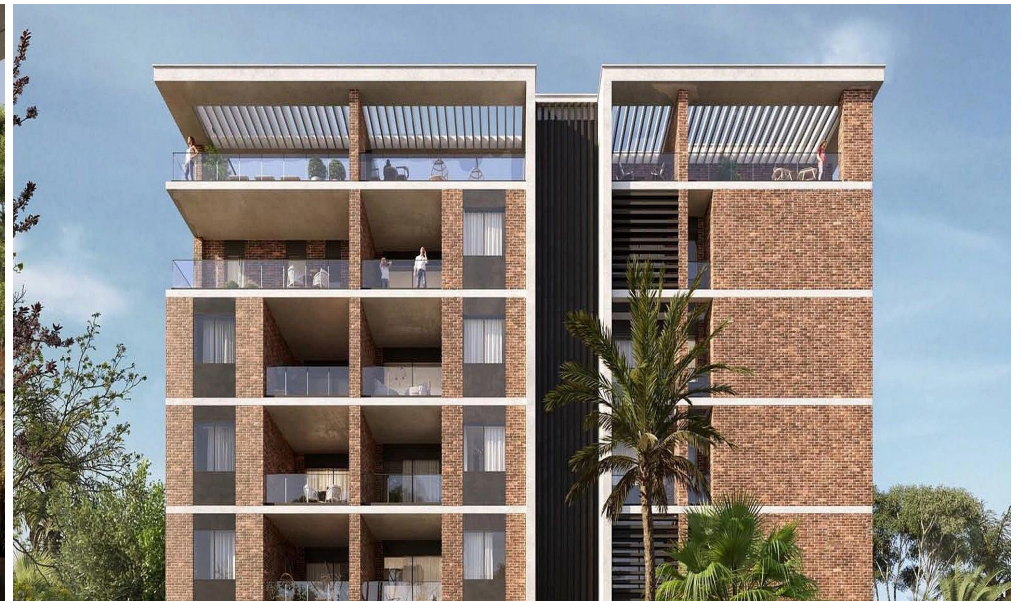
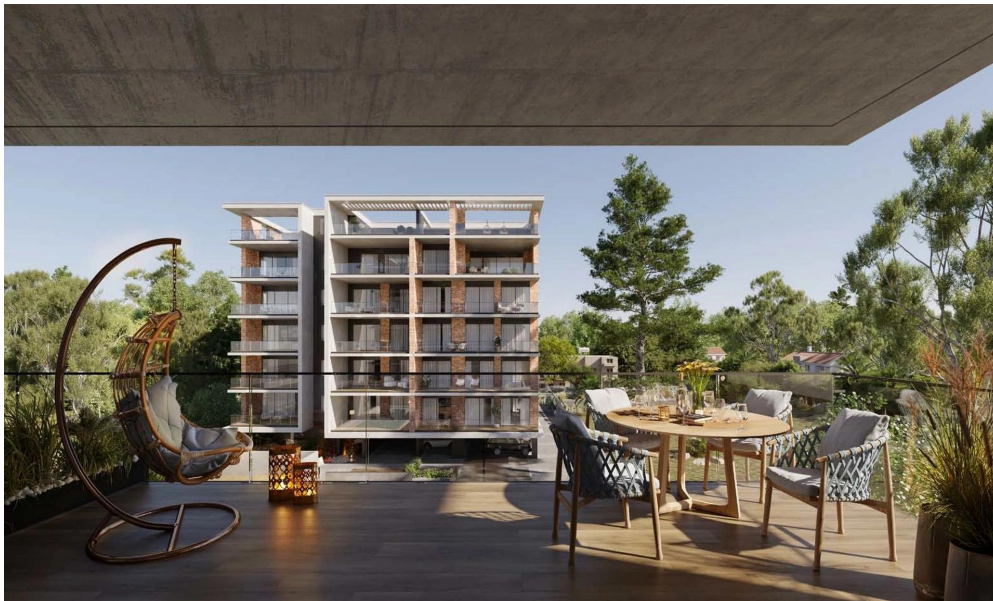
## Representative: RealDeal Estates

Registration number	<b>1311</b>	Email	<b>info@realdeal.cy</b>
License number	<b>347/E</b>	Legal name	<b>Esperia Estates (Limassol-Paphos) Limited</b>
Phone: <b>+35725255505, +35794001333</b>			

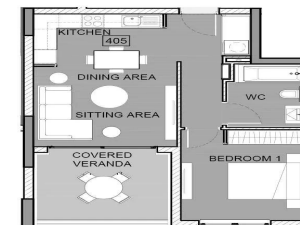
## Price change history

€640 000 on Apr 8, 2025





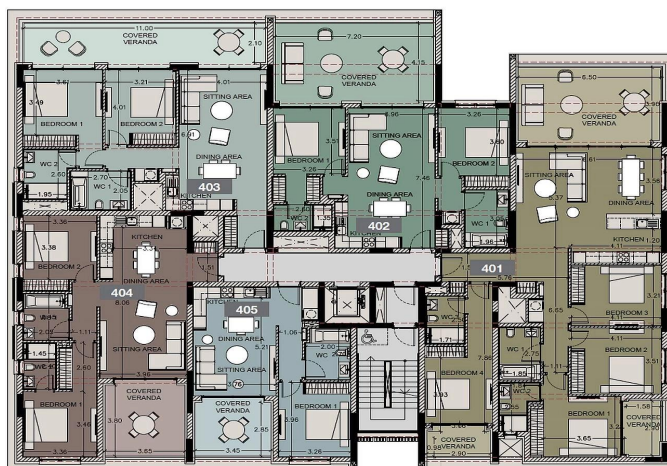




## • floor plans block b

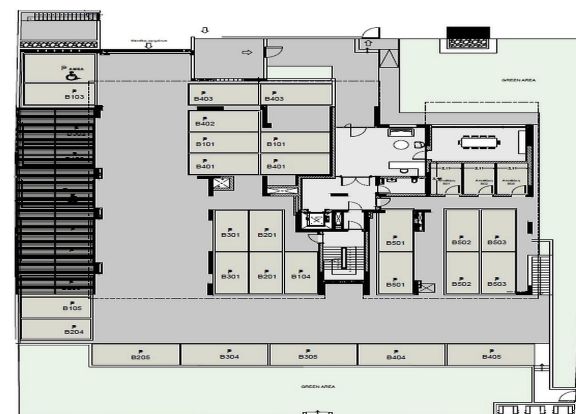
### 4th Floor

Unit N°	Total Area, m²
401	244.65
402	153.69
403	165.03
404	137.65
405	95.38



## • floor plans block b

### ground floor



• master plan  
block a

block b

