


## 2 Bedroom Apartment for Sale in Potamos Germasogeias, Limassol District

This is club-type project consisting of 14 apartments is located in the most popular area of Limassol – Potamos Germasogeia. This is a new modern complex designed for living off the coast, combines all the conditions for a Mediterranean lifestyle in an urban environment. 

Each apartment is delivered with high quality finishing using premium quality materials, they have high ceilings and spacious verandas.

### Property Info

Covered Area	<b>138</b>
Covered Veranda	<b>39</b>
Floor Number	<b>1</b>
Heating	<b>Underfloor Heating, Yes</b>
Air Conditioning	<b>All rooms, Yes</b>

### Plot / Area Info

Parking **Covered, Yes**

### Additional info

Reference Number	<b>3075</b>
Property type	<b>Apartment</b>
Condition	<b>Under Construction</b>
Bathrooms	<b>2</b>

### Amenities

- Parking

### Location

**Location:** Potamos Germasogeias      Region: **Limassol**  
 Coordinates: **34.696081867743 / 33.078589247734**

## Price: €715 000 + VAT

VAT for this property is **€35,750** or **€135,850**. VAT usually is 19%. If it is your first purchase of property, you can have VAT reduced to 5% for the first 150sq.m. of the property.

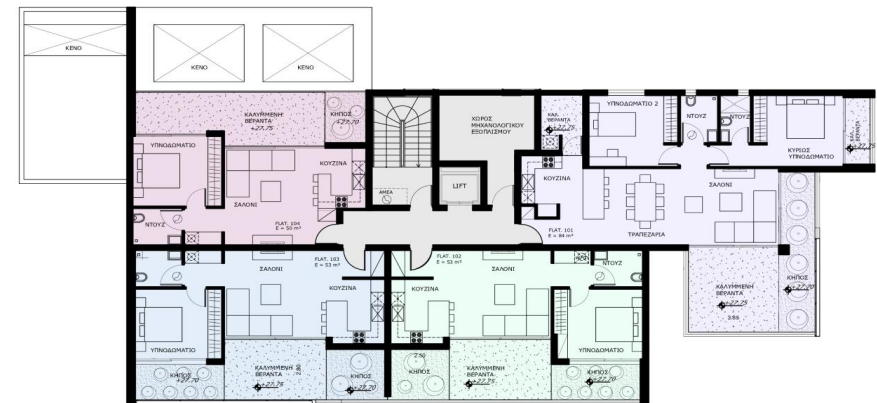
VAT	<b>Excluded</b>	Title transfer fee	<b>None</b>	Common expenses	<b>None</b>
		Price per SQM	<b>€5 181.00/m<sup>2</sup></b>		

## Representative: RealDeal Estates

Registration number	<b>1311</b>	Email	<b>info@realdeal.cy</b>
License number	<b>347/E</b>	Legal name	<b>Esperia Estates (Limassol-Paphos) Limited</b>
Phone:	<b>+35725255505, +35794001333</b>		

## Price change history

€715 000 on Apr 8, 2025



1st floor