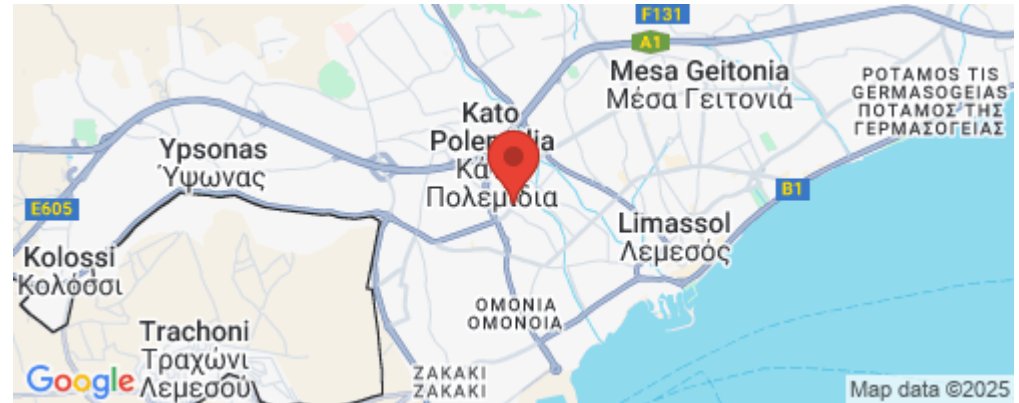


## Building for Sale in Limassol District

This is a landmark business centre, located in one of Limassol's main commercial hub. This outstanding building comprises of 6 floors of commercial office space, all of which are meticulously designed to reach the level of quality any high calibre business deserves and expects. Furthermore, the floor to ceiling windows provide astonishing city and mountain views, complementing the open plan configuration.



### KEY FEATURES:

- Structure: reinforced concrete frame
- Elevator
- Internal Staircase
- Traffic control system
- Storeroom
- Entrance control system
- Facade HQ glass, alucobond, fair face beton

**Price: €12 000 000 + VAT**

VAT	<b>Excluded</b>	Title transfer fee Price per SQM	<b>None N/A</b>	Common expenses	<b>None</b>
-----	-----------------	-------------------------------------	---------------------	-----------------	-------------

## Representative: RealDeal Estates

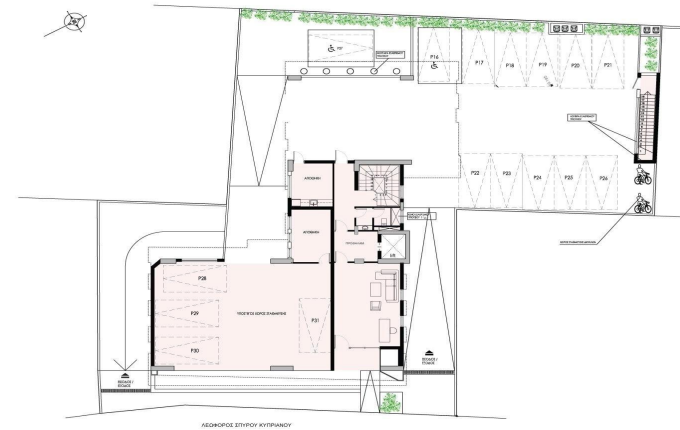
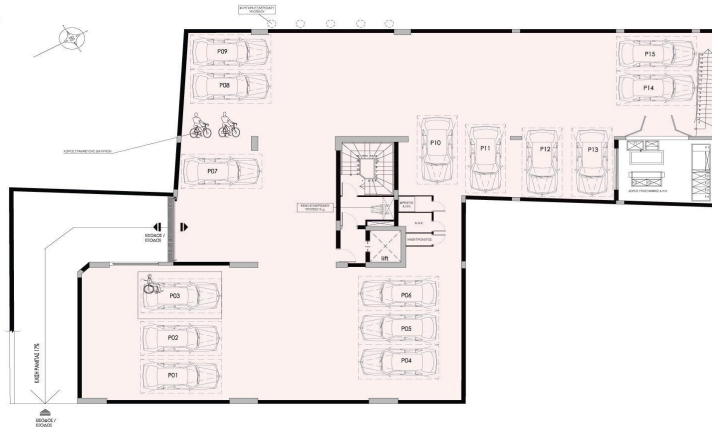
Registration number	<b>1311</b>	Email	<b>info@realdeal.cy</b>
License number	<b>347/E</b>	Legal name	<b>Esperia Estates (Limassol-Paphos) Limited</b>
Phone: <b>+35725255505, +35794001333</b>			

## Price change history

€12 000 000 on Apr 8, 2025

## Underground FLOOR

- TOTAL COVERED AREA: 700m<sup>2</sup>
- PARKING SPACES: 15



- LOBBY AREA: 100m<sup>2</sup>
- COVERED PARKING SPACES: 70m<sup>2</sup>
- PARKING SPACES: 14

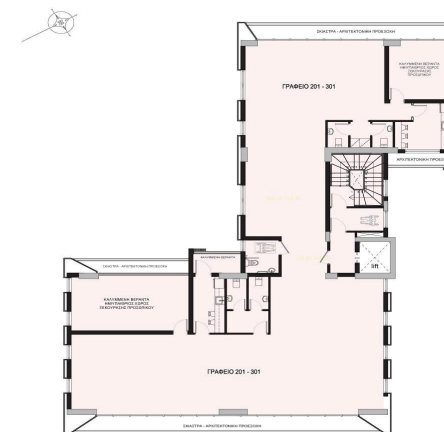
Ground FLOOR

## First FLOOR

- COVERED AREA: 274m<sup>2</sup>
- COVERED BALCONY: 55m<sup>2</sup>
- COMMON AREA: 40m<sup>2</sup>
- TOTAL FLOOR AREA: 369m<sup>2</sup>



ΑΕΔΡΟΠΟΙ ΣΤΥΠΟΥ ΚΥΠΡΙΑΝΟΥ



ΑΕΔΡΟΠΟΙ ΣΤΥΠΟΥ ΚΥΠΡΙΑΝΟΥ

- COVERED AREA: 274m<sup>2</sup>
- COVERED BALCONY: 55m<sup>2</sup>
- COMMON AREA: 40m<sup>2</sup>
- TOTAL FLOOR AREA: 369m<sup>2</sup>

Second-Third FLOOR



ΑΕΒΟΡΟΕ ΣΤΥΠΟΥ ΚΥΤΡΙΑΝΟΥ

- COVERED AREA: 274m<sup>2</sup>
- COVERED BALCONY: 61m<sup>2</sup>
- COMMON AREA: 40m<sup>2</sup>
- TOTAL FLOOR AREA: 375m<sup>2</sup>

**Fifth**FLOOR

## Underground FLOOR

- TOTAL COVERED AREA: 700m<sup>2</sup>
- PARKING SPACES: 15



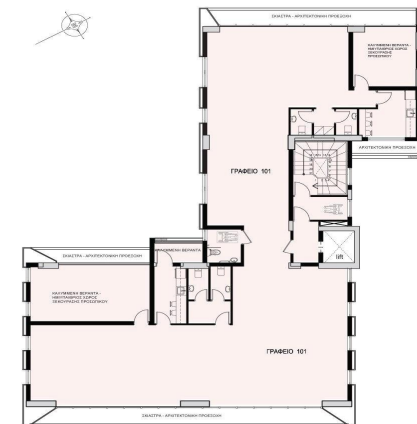
ΑΕΒΟΡΟΕ ΣΤΥΠΟΥ ΚΥΤΡΙΑΝΟΥ

- LOBBY AREA: 100m<sup>2</sup>
- COVERED PARKING SPACES: 70m<sup>2</sup>
- PARKING SPACES: 14

**Ground**FLOOR

## First FLOOR

- COVERED AREA: 274m<sup>2</sup>
- COVERED BALCONY: 55m<sup>2</sup>
- COMMON AREA: 40m<sup>2</sup>
- TOTAL FLOOR AREA: 369m<sup>2</sup>



ΑΕΒΟΡΟΕ ΣΤΥΠΟΥ ΚΥΤΡΙΑΝΟΥ

## Fourth FLOOR

- COVERED AREA: 274m<sup>2</sup>
- COVERED BALCONY: 55m<sup>2</sup>
- COMMON AREA: 40m<sup>2</sup>
- TOTAL FLOOR AREA: 369m<sup>2</sup>



ΛΕΩΦΟΡΟΣ ΣΤΥΡΙΟΥ ΚΥΠΡΙΑΝΟΥ



ΛΕΩΦΟΡΟΣ ΣΤΥΡΙΟΥ ΚΥΠΡΙΑΝΟΥ

- COVERED AREA: 274m<sup>2</sup>
- COVERED BALCONY: 61m<sup>2</sup>
- COMMON AREA: 40m<sup>2</sup>
- TOTAL FLOOR AREA: 375m<sup>2</sup>

## Fifth FLOOR