


4 Bedroom Apartment for Sale in Potamos Germasogeias, Limassol District

This luxurious four-bedroom seafront penthouse offers panoramic views of the Mediterranean Sea from every angle. With its striking curvilinear high-rise design, it represents a new era of contemporary architecture on the island. 

Perfectly positioned on the Limassol seafront, the residence is easily accessible and located close to luxury hotels, fine dining, and world-class shopping in one of the city's most vibrant and prestigious areas.

The penthouse is complemented by five-star services and facilities, including a private owner's club, concierge, expansive spa areas, indoor and outdoor swimming pools, fully equipped gyms, underground parking, and secure gated access. S...

Property Info

Covered Area	236
Covered Veranda	66
Floor Number	21
Total Number of Floors	27
Heating	Underfloor Heating, Yes
Air Conditioning	All rooms, Yes

Plot / Area Info

Pool	Common, Yes
Parking	Covered, Yes

Additional info

Reference Number	3431
Property type	Apartment
Condition	Brand New
Bathrooms	4
View	City view

Amenities

- Elevator

Location

Location: Potamos Germasogeias Region: **Limassol**
Coordinates: **34.701356697262 / 33.103029735324**

Price: €5 150 000 + VAT

VAT for this property is **€520,237** or **€978,500**. VAT usually is 19%. If it is your first purchase of property, you can have VAT reduced to 5% for the first 150sq.m. of the property.

VAT	Excluded	Title transfer fee	None	Common expenses	None
		Price per SQM	€21 822.00/m²		

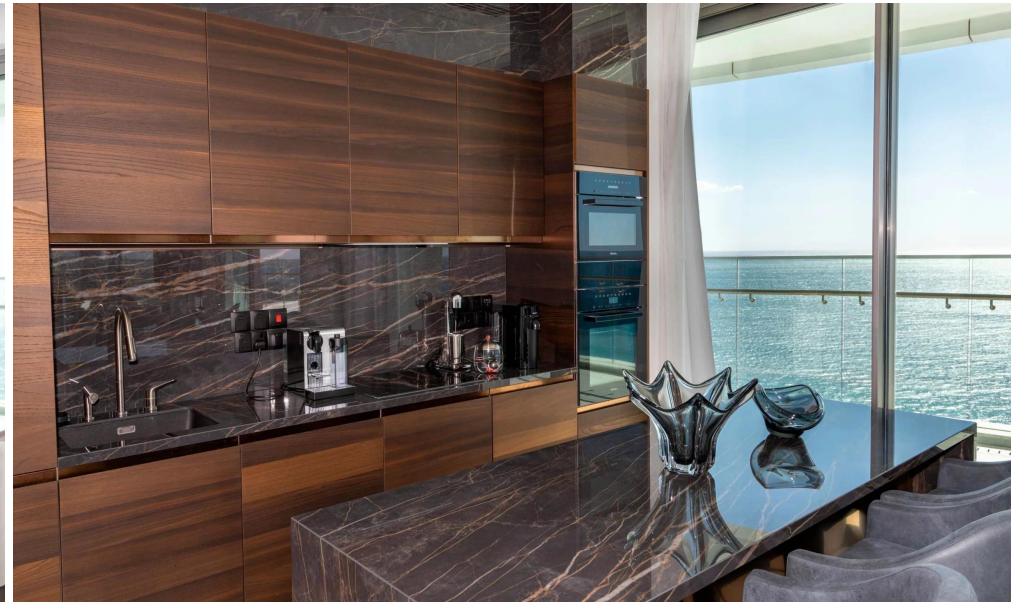
Representative: RealDeal Estates

Registration number	1311	Email	info@realdeal.cy
License number	347/E	Legal name	Esperia Estates (Limassol-Paphos) Limited
Phone: +35725255505, +35794001333			

Price change history

€5 300 000 on Apr 8, 2025
 €5 150 000 on Dec 18, 2025





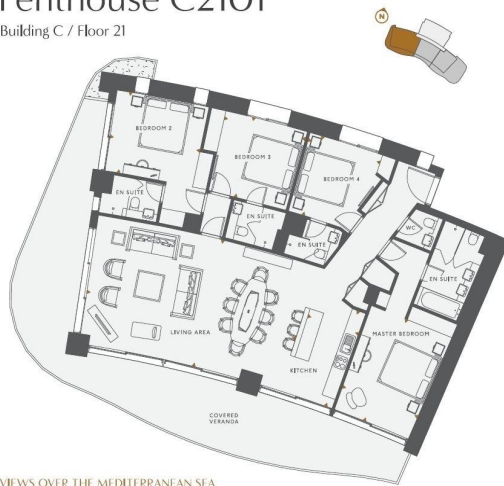






Penthouse C2101

Building C / Floor 21



VIEWS OVER THE MEDITERRANEAN SEA

Bedrooms	4
Bathrooms / Washroom	4.5
All Areas	395.20 m ²
Internal Area	171.40 m ²
Covered Veranda	66.01 m ²
Common Area	154.70m ²
Total Covered Area	236.13m ²
Parking	B16-B55