

## 1 Bedroom Apartment for Sale in Kiti, Larnaca District

Built with modern elegance in mind, it consists of two stylish buildings with 16 high-spec apartments, including 8 one-bedroom units, 4 two-bedroom units, and 4 two-bedroom penthouses with private rooftops. 

Nestled in a lush, green neighborhood and directly facing a serene public park, this development offers the perfect balance of comfort, nature, and affordability.

Whether you're a first-time buyer, a growing family, or an investor, this project presents an exceptional opportunity for those seeking quality and value in a prime location.

This property boasts an exceptional location, ensuring effortless living with schools, pharmacies, supermarkets, restaurants, and...

### Property Info

Covered Area	<b>63</b>
Covered Veranda	<b>11</b>
Floor Number	<b>1</b>
Total Number of Floors	<b>2</b>

### Plot / Area Info

Parking **Covered, Yes**

### Additional info

Reference Number	<b>3740</b>
Property type	<b>Apartment</b>
Bathrooms	<b>1</b>

### Amenities

- Parking

### Location

**Location:** Kiti

Coordinates: **34.855914794585 / 33.580613159821**

Region: **Larnaca**

## Price: €150 000 + VAT

VAT for this property is **€7,500** or **€28,500**. VAT usually is 19%. If it is your first purchase of property, you can have VAT reduced to 5% for the first 150sq.m. of the property.

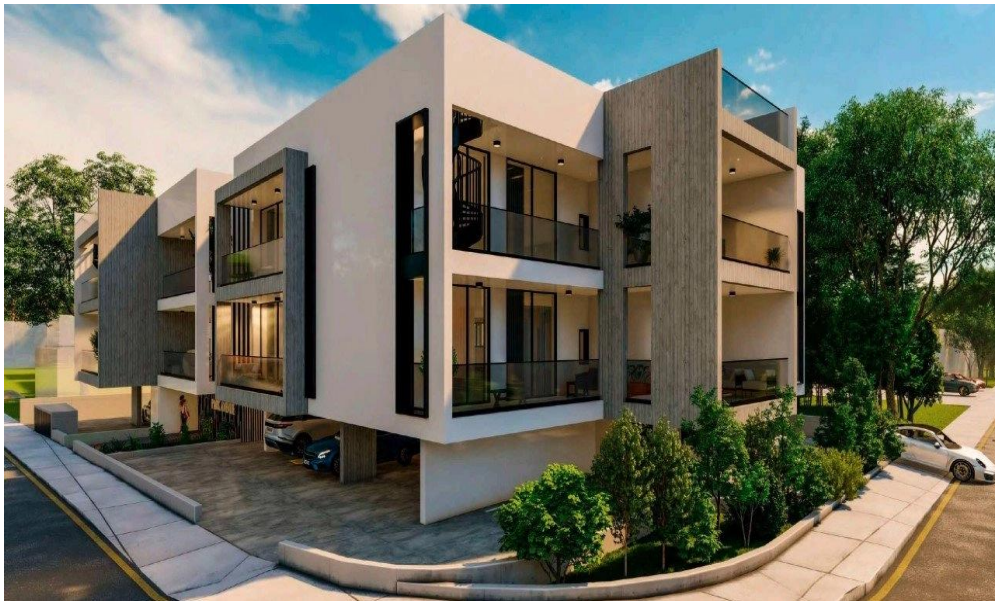
VAT	<b>Excluded</b>	Title transfer fee	<b>~€2 900.00</b>	Common expenses	<b>None</b>
		Price per SQM	<b>€2 381.00/m<sup>2</sup></b>		

## Representative: RealDeal Estates

Registration number	<b>1311</b>	Email	<b>info@realdeal.cy</b>
License number	<b>347/E</b>	Legal name	<b>Esperia Estates (Limassol-Paphos) Limited</b>
Phone: <b>+35725255505, +35794001333</b>			

## Price change history

€150 000 on Apr 10, 2025





## One Bedroom Apartment Floor Plan



**One bedroom**  
Spacious and modern



**One bathroom**  
Modern two bathroom



**70 sq.m**  
Expansive open space



**One Parking**  
Dedicated parking spot