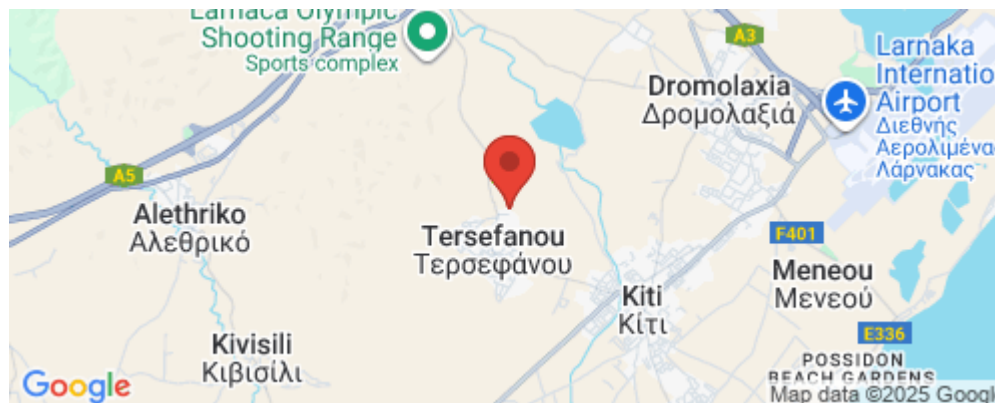


## 4 Bedroom House for Sale in Tersefanou, Larnaca District

The Project is positioned in the picturesque village of Tersefanou just 15 minutes away from Larnaca Town.



An exclusive gated residential development of four houses; (3) of three bedrooms and (1) of four bedrooms, located on an elevated land and benefits from exclusive resort facilities including a substantially sized communal pool with changing rooms, a comprehensively equipped gym and a club house. Each house benefits from a beautiful garden space and private parking.

They are perfectly positioned for panoramic views. This exclusive complex is a short drive to the traditional villages of Kiti, Pervolia and Meneou, offering their visitors a comprehensive list of amenities i...

Property Info		Plot / Area Info		Additional info	
Covered Veranda	<b>14</b>	Plot area	<b>154</b>	Reference Number	<b>3771</b>
Energy Efficiency	<b>A</b>	Pool	<b>Common, Yes</b>	Property type	<b>House</b>
		Parking	<b>Covered, Yes</b>	Condition	<b>Under Construction</b>
				Bathrooms	<b>4</b>

### Amenities

### Location

- Parking

**Location:** Tersefanou

Region: **Larnaca**

Coordinates: **34.860457530851 / 33.54976775615**

**Price: €370 000 + VAT**

VAT	<b>Excluded</b>	Title transfer fee Price per SQM	<b>None N/A</b>	Common expenses	<b>None</b>
-----	-----------------	-------------------------------------	---------------------	-----------------	-------------

## Representative: RealDeal Estates

Registration number	<b>1311</b>	Email	<b>info@realdeal.cy</b>
License number	<b>347/E</b>	Legal name	<b>Esperia Estates (Limassol-Paphos) Limited</b>
Phone: <b>+35725255505, +35794001333</b>			

## Price change history

€370 000 on Apr 10, 2025







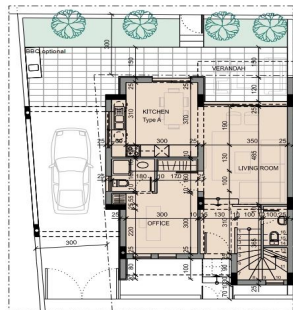
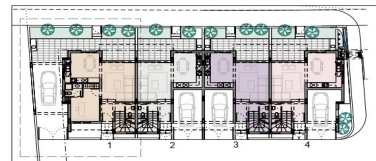


Land Area: 155m<sup>2</sup>  
Ground Floor Area: 66,4m<sup>2</sup>  
First Floor Area: 58,6m<sup>2</sup>  
Attic Floor Area: 44m<sup>2</sup>  
Total House Area: 169m<sup>2</sup>

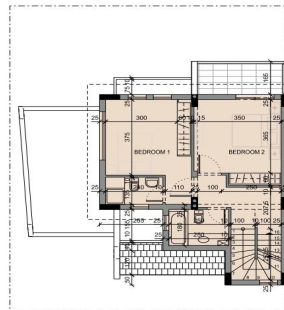
Garage: 21,3m<sup>2</sup>  
Covered Veranda: Gr. level: 7,5m<sup>2</sup>,  
Veranda 1st level: 6,4m<sup>2</sup>  
Rooms: 4 Bathrooms: 5

Location: Tarsefanou

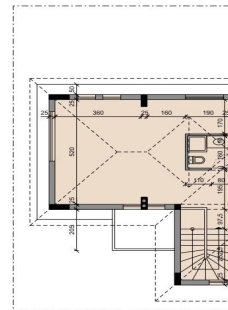
HOUSE 1



GROUND FLOOR PLAN



FIRST FLOOR PLAN



ATTIC FLOOR PLAN

Fig. 2-4-1