

## 3 Bedroom Apartment for Sale in Agios Tychonas, Limassol District

The project consists of 9 units divided into two parts. The units consist of: 1 maisonette 2/(3) bedrooms (standard and extended), with an area of 114-128 m2 and 1 apartment (1 bedroom, with an area of 70 m2) on the ground floor and an office on the upper floor. Also, each unit has: a warehouse of 10+ m2, parking, a roofgarden and a private courtyard on the inside. Common areas of the complex: swimming pool, park area, parking. View of the valley and the sea depending on the location/height. The units are 5 standard and 4 extended, they can be combined into one large maisonette of 4(5) bedrooms + office.

### Property Info

Covered Area	<b>275</b>
Furnishing	<b>Unfurnished</b>
Energy Efficiency	<b>N/A</b>
Air Conditioning	<b>No</b>

### Plot / Area Info

Parking	<b>Covered, Yes</b>
---------	---------------------

### Additional info

Reference Number	<b>135381</b>
Property type	<b>Apartment</b>
Condition	<b>Brand New</b>
Bathrooms	<b>4</b>

### Amenities

#### Location

**Location:** Agios Tychonas Region: **Limassol**

**Price: €490 000 + VAT**

VAT for this property is **€55,682** or **€93,100**. VAT usually is 19%. If it is your first purchase of property, you can have VAT reduced to 5% for the first 150sq.m. of the property.

VAT	<b>Excluded</b>	Title transfer fee	<b>None</b>	Common expenses	<b>None</b>
		Price per SQM	<b>€1 782.00/m²</b>		

**Representative: DOM Real Estate**

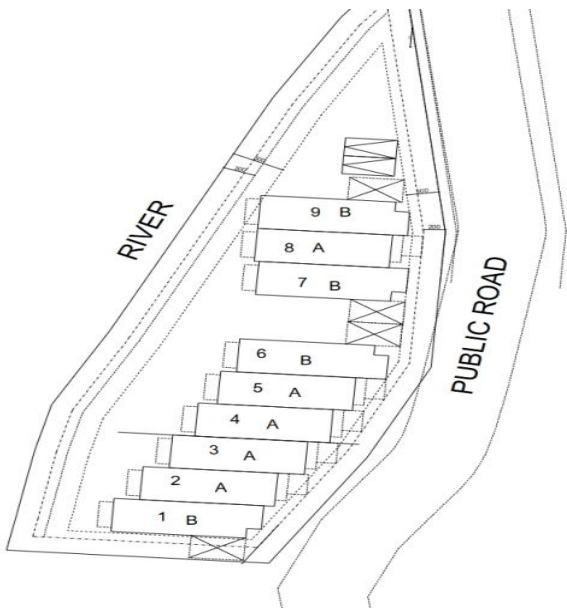
Registration number	<b>397</b>	Email	<b>info@dom.com.cy</b>
License number	<b>338/E</b>	Legal name	<b>N/A</b>
Phone: + <b>35796644888</b>			

**Price change history**

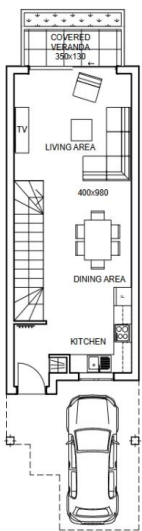
€450 000 on Apr 16, 2025

€490 000 on Jun 25, 2025





Ground floor



TYPE A  
TWO BEDROOM HOUSE  
parking in front

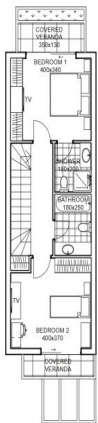


TYPE B.1  
TWO BEDROOM HOUSE  
parking on the site

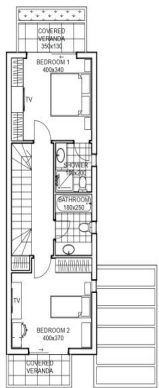


TYPE B.2  
TWO BEDROOM HOUSE  
parking on the site

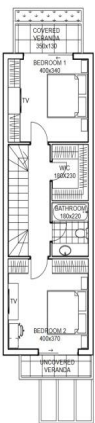
First floor



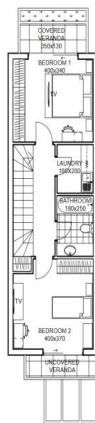
TYPE A.1  
TWO BEDROOM HOUSE  
parking in front  
INT. COVERED AREA 54.50m<sup>2</sup>  
EXT. COVERED AREAS 8.02m<sup>2</sup>



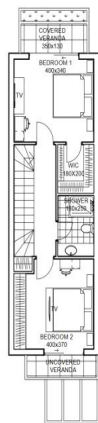
TYPE B.1  
TWO BEDROOM HOUSE  
parking on the site  
INT. COVERED AREA 54.50m<sup>2</sup>  
EXT. COVERED AREAS 8.02m<sup>2</sup>



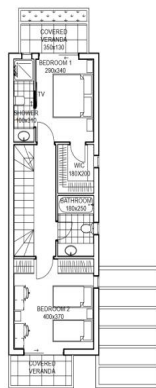
TYPE A.2  
TWO BEDROOM HOUSE  
parking in front



TYPE A.3  
TWO BEDROOM HOUSE  
parking in front



TYPE A.4  
TWO BEDROOM HOUSE  
parking in front



TYPE B.2  
TWO BEDROOM HOUSE  
parking on the site