

1 Bedroom Apartment for Sale in Oroklini, Larnaca District

This architectural masterpiece features breathtaking contemporary design, stunning sea views, and luxury amenities, including a gym, pool, and BBQ area. Elevate your lifestyle with the perfect blend of elegance and tranquility.



Property Info

| | |
|------------------------|--------------------------------|
| Covered Area | 63 |
| Covered Veranda | 12 |
| Total Number of Floors | 3 |
| Energy Efficiency | A |
| Heating | Autonomous Heating, Yes |

Plot / Area Info

| | |
|---------|---------------------|
| Pool | Common, Yes |
| Parking | Covered, Yes |

Additional info

| | |
|------------------|---------------------------|
| Reference Number | 4000 |
| Property type | Apartment |
| Condition | Under Construction |
| Bathrooms | 1 |

Amenities

- Parking

Location

Location: Oroklini

Region: **Larnaca**

Coordinates: **34.991331799605 / 33.654996150884**

Price: €170 000 + VAT

VAT for this property is **€8,500** or **€32,300**. VAT usually is 19%. If it is your first purchase of property, you can have VAT reduced to 5% for the first 150sq.m. of the property.

| | | | | | |
|-----|-----------------|--------------------|--------------------------------|-----------------|-------------|
| VAT | Excluded | Title transfer fee | None | Common expenses | None |
| | | Price per SQM | €2 698.00/m² | | |

Representative: RealDeal Estates

| | | | |
|--|--------------|------------|--|
| Registration number | 1311 | Email | info@realdeal.cy |
| License number | 347/E | Legal name | Esperia Estates (Limassol-Paphos) Limited |
| Phone: +35725255505, +35794001333 | | | |

Price change history

€170 000 on Apr 18, 2025

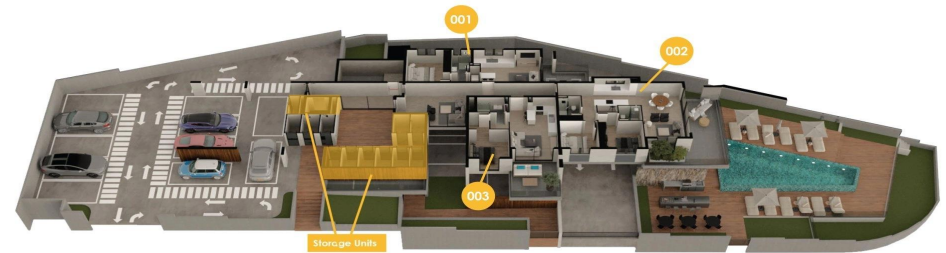








GROUND FLOOR



Apartment 001
 51.5m² covered living area
 12.4m² veranda area
 3.2m² storage room
 1 bedroom
 1 bathroom
 1 parking

Apartment 002
 83.3m² covered living area
 30.7m² veranda area
 3m² storage room
 2 bedrooms
 2 bathrooms (1 en-suite)
 1 parking

Apartment 003
 50m² covered living area
 16.3m² veranda area
 3m² storage room
 1 bedroom
 1 bathroom
 1 parking

FLOOR PLANS

BASEMENT



Gym
 50.6m² covered area

**Fitness Changing
 & Shower Facilities**
 22m² covered area