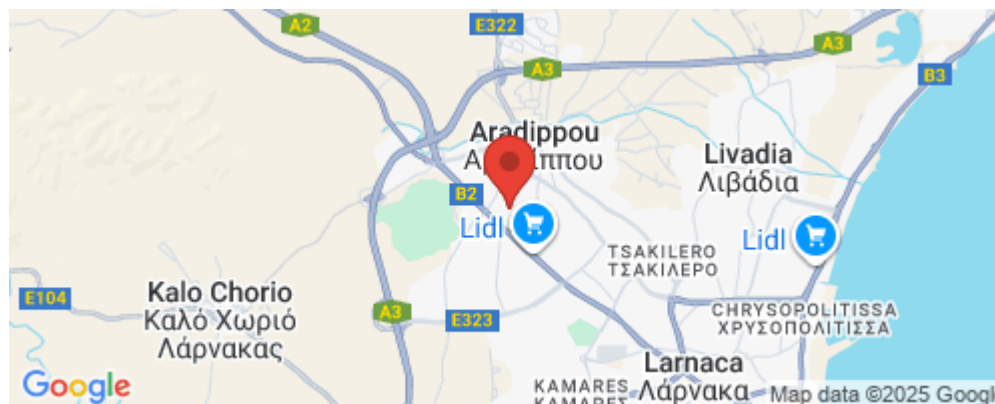


2 Bedroom Apartment for Sale in Aradippou, Larnaca District

Located in central Larnaca, this luxury complex, spanning three floors, features eight meticulously designed two- and three-bedroom apartments.



The development stands as a modern architectural marvel, seamlessly blending visionary design with opulent interiors to redefine contemporary living.

Its distinctive style merges glass, steel, wood, and concrete, creating a unique urban oasis.

Each apartment boasts spacious layouts, creative use of space, and sun-drenched interiors, thanks to generously sized verandas with glass fronts.

ALL PROPERTIES BENEFIT FROM:

- Energy-efficient class A certificate
- Shared electricity with net metering photovoltaic...

Property Info		Plot / Area Info		Additional info	
Covered Area	152			Reference Number	4077
Covered Veranda	71			Property type	Apartment
Floor Number	3	Parking	Covered, Yes	Condition	Under Construction
Total Number of Floors	3			Bathrooms	2
Energy Efficiency	A				
Heating	Central Heating, Yes				

Location

- Parking

Location: Aradippou

Region: **Larnaca**

Coordinates: **34.942984187976 / 33.586739307565**

Price: €270 000 + VAT

VAT for this property is **€13,997** or **€51,300**. VAT usually is 19%. If it is your first purchase of property, you can have VAT reduced to 5% for the first 150sq.m. of the property.

VAT	Excluded	Title transfer fee	None	Common expenses	None
		Price per SQM	€1 776.00/m²		

Representative: RealDeal Estates

Registration number	1311	Email	info@realdeal.cy
License number	347/E	Legal name	Esperia Estates (Limassol-Paphos) Limited
Phone: +35725255505, +35794001333			

Price change history

€270 000 on Apr 22, 2025





FLOOR PLANS

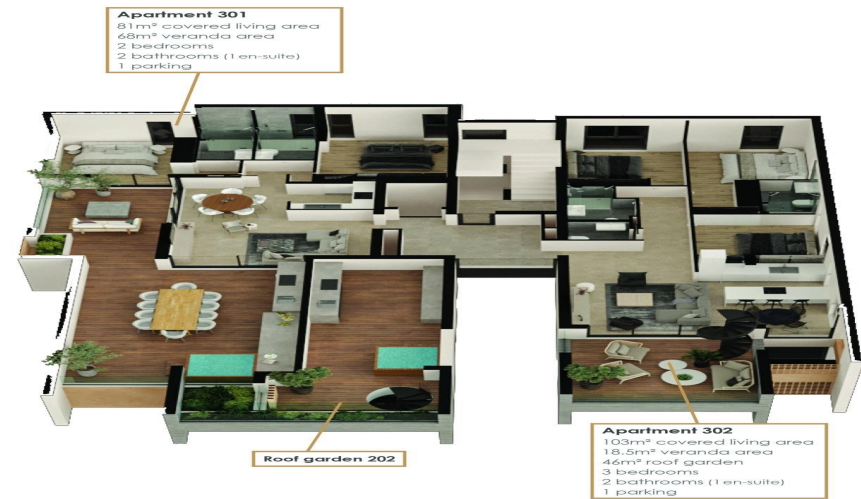
GROUND FLOOR



Apartment 001
81m² covered living area
18m² veranda area
36m² garden
2 bedrooms
2 bathrooms (1 en-suite)
1 parking

Storage Units

THIRD FLOOR



Apartment 301
81m² covered living area
68m² veranda area
2 bedrooms
2 bathrooms (1 en-suite)
1 parking

Roof garden 202

Apartment 302
103m² covered living area
18.5m² veranda area
46m² roof garden
3 bedrooms
2 bathrooms (1 en-suite)
1 parking