

## 2 Bedroom Apartment for Sale in Limassol - Agios Nicolaos

A complex of 24 luxury apartments. 1- and 2-room apartments, with large terraces and communal swimming pool. Walking distance to Kolonakiu Avenue and a short drive from the city center, the waterfront, the necessary infrastructure. All common interior spaces will be lined with marble, an entrance hall, a living room and a dining room, a kitchen, corridors, bathrooms. and the terraces will be tiled with ceramic tiles, the bedrooms will be lined with natural wooden parquet with pre-varnishing. Imported kitchen, wardrobes and interior doors, pre-equipped with kitchen appliances. Complete VRV installation (heating and cooling). Decorative vertical shading panels on terraces. Electric water he...

### Property Info

Covered Area	<b>107</b>
Furnishing	<b>Furnished</b>
Energy Efficiency	<b>A</b>
Air Conditioning	<b>All rooms, Yes</b>

### Plot / Area Info

Parking	<b>Covered, Yes</b>
---------	---------------------

### Additional info

Reference Number	<b>150359</b>
Property type	<b>Apartment</b>
Condition	<b>Brand New</b>
Bathrooms	<b>2</b>

### Amenities

#### Location

**Location:** Limassol - Agios Nicolaos Region: **Limassol**

## Price: €510 000 + VAT

VAT for this property is **€25,500** or **€96,900**. VAT usually is 19%. If it is your first purchase of property, you can have VAT reduced to 5% for the first 150sq.m. of the property.

VAT	<b>Excluded</b>	Title transfer fee	<b>None</b>	Common expenses	<b>None</b>
		Price per SQM	<b>€4 766.00/m<sup>2</sup></b>		

## Representative: DOM Real Estate

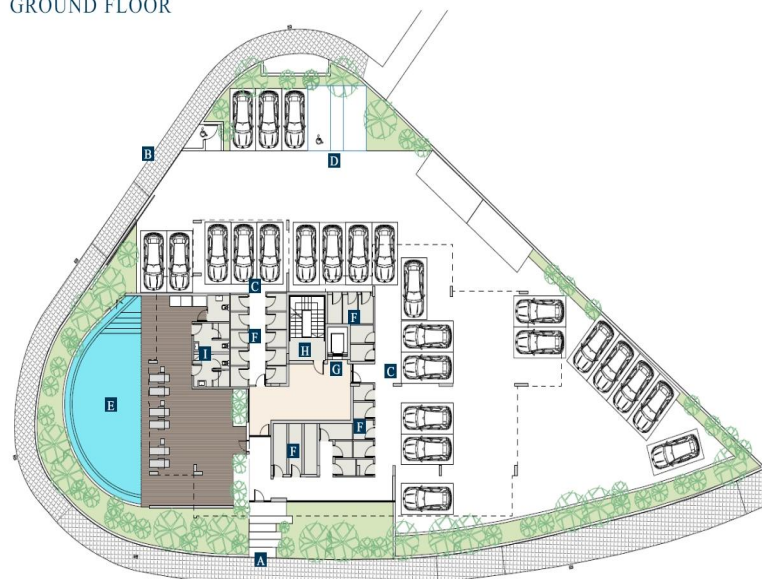
Registration number	<b>397</b>	Email	<b>info@dom.com.cy</b>
License number	<b>338/E</b>	Legal name	<b>N/A</b>
Phone: +35796644888			

## Price change history

€510 000 on Apr 27, 2025



GROUND FLOOR



- A. Pedestrian entrance
- B. Parking entrance & exit
- C. Building entrance
- D. Disabled parking space
- E. Communal swimming pool
- F. Storerooms
- G. Lift
- H. Staircase
- I. Shower, changing rooms & WC

1<sup>ST</sup>, 2<sup>ND</sup>, 3<sup>RD</sup> & 4<sup>TH</sup> FLOOR

