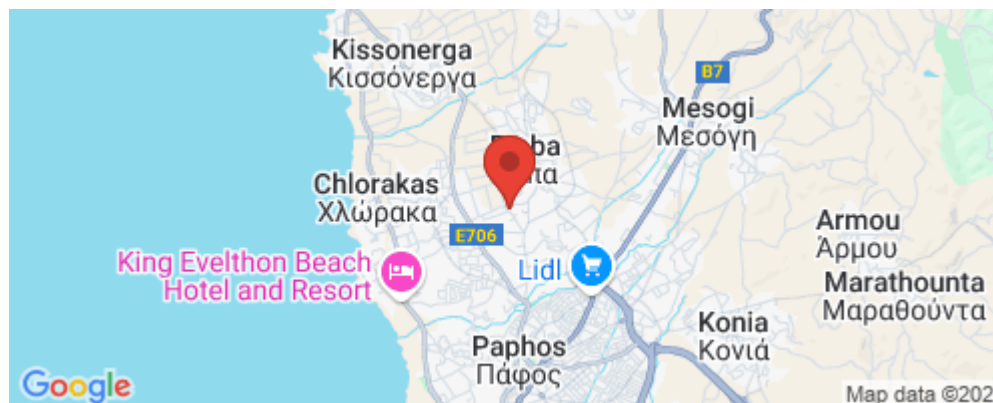


3 Bedroom House for Sale in Paphos - Emba

Introducing this new development in the charming village of Emba, where contemporary living meets serene surroundings.



This project offers a harmonious blend of 17 exquisite villas and 19 modern apartments, all strategically located for your convenience. These well-designed apartments offer a stylish and comfortable living space. Whether you're a young professional, a couple, or seeking a cozy place to call home, our apartments cater to various needs.

The villas in this project are a true symbol of luxury and spaciousness. With multiple bedrooms and abundant living space, they're perfect for families looking for a contemporary and peaceful lifestyle.

All ...

Property Info

| | |
|------------------|-----------------------------|
| Covered Area | 147 |
| Heating | Central Heating, Yes |
| Air Conditioning | All rooms, Yes |

Plot / Area Info

| | |
|-----------|---------------------|
| Plot area | 300 |
| Pool | Yes |
| Parking | Covered, Yes |

Additional info

| | |
|------------------|------------------|
| Reference Number | 14426 |
| Property type | House |
| Condition | Brand New |
| Bathrooms | 2 |

Amenities

Location

Price: €540 000 + VAT

VAT for this property is **€27,000** or **€102,600**. VAT usually is 19%. If it is your first purchase of property, you can have VAT reduced to 5% for the first 150sq.m. of the property.

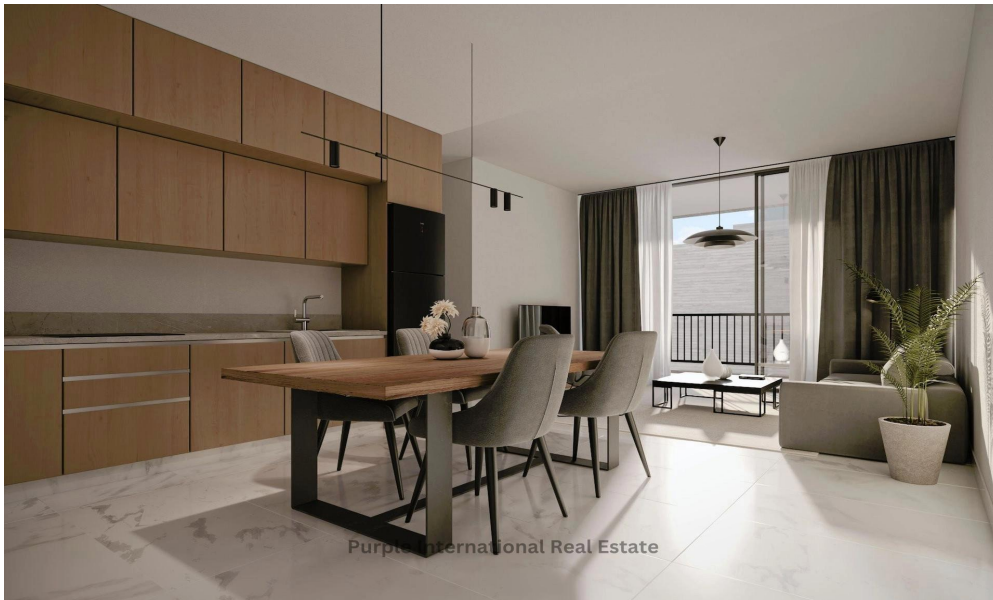
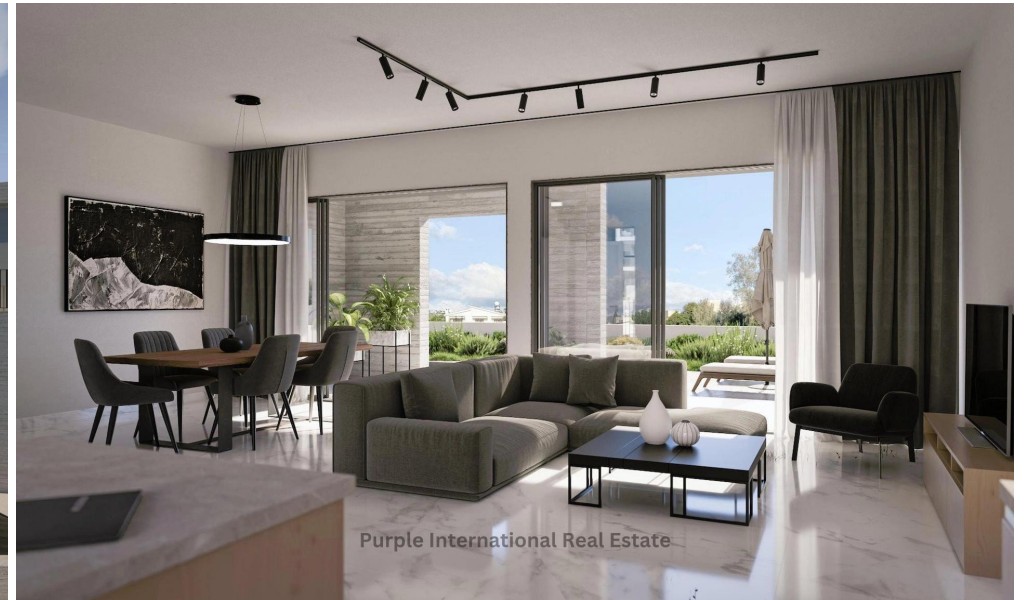
| | | | | | |
|-----|-----------------|--------------------|---------------------|-----------------|-------------|
| VAT | Excluded | Title transfer fee | None | Common expenses | None |
| | | Price per SQM | €3 673.00/m² | | |

Representative: Purple International Real Estate

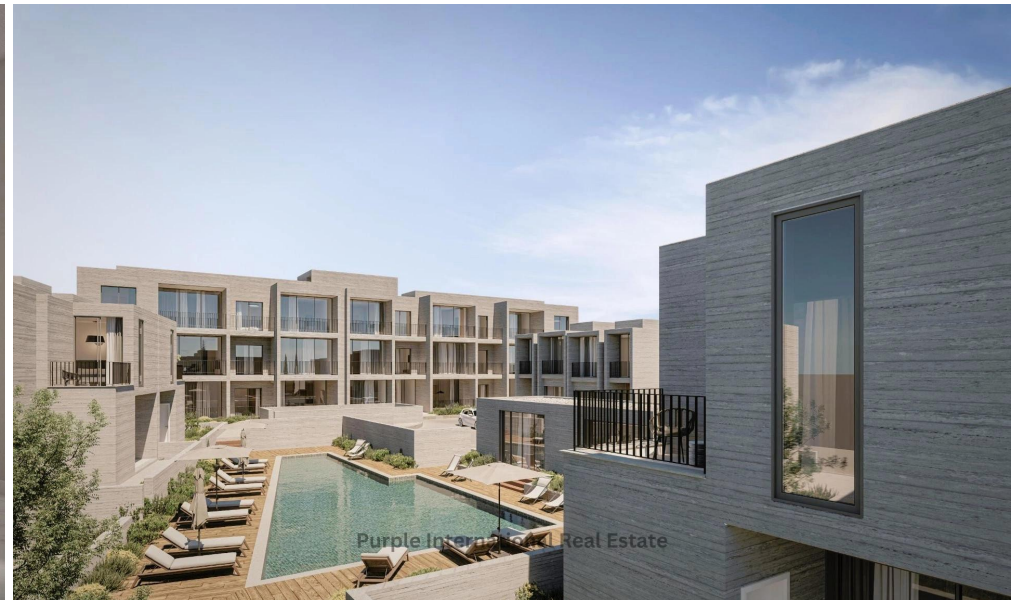
| | | | |
|---------------------|--------------|------------|------------------------------------|
| Registration number | 1052 | Email | info@purpleinternational.eu |
| License number | 512/E | Legal name | A.A. Purple Real Estate Ltd |
| Phone: +35723811058 | | | |

Price change history

€540 000 on May 2, 2025







MASTERPLAN FIRST FLOOR



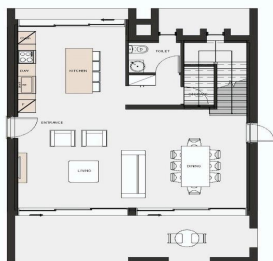
Purple International Real Estate

MASTERPLAN ROOF PLAN



Purple International Real Estate

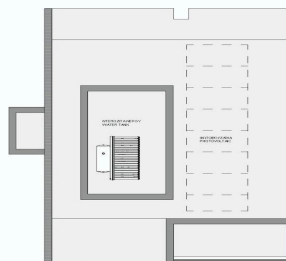
TYPE B
TOTAL BUILT: 146.80m²
TOTAL COVERED: 98.40m²



GROUND FLOOR BUILT: 73.37m²



FIRST FLOOR BUILT: 73.43m²



ROOF COVERAGE: 98.40m²

Purple International Real Estate

MASTERPLAN SECOND FLOOR



Purple International Real Estate



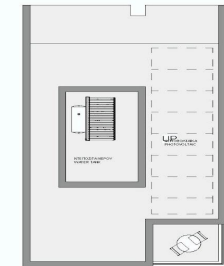
TYPE A
TOTAL BUILT: 132.94m²
TOTAL COVERED: 82.71m²



GROUND FLOOR BUILT: 68.18m²



FIRST FLOOR BUILT: 64.76m²



ROOF COVERAGE: 82.71m²

Purple International Real Estate

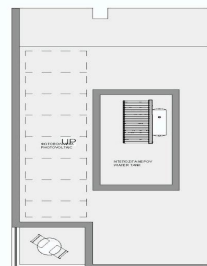
TYPE A1M
TOTAL BUILT: 132.94m²
TOTAL COVERED: 82.71m²



GROUND FLOOR BUILT: 68.18m²



FIRST FLOOR BUILT: 64.76m²



ROOF COVERAGE: 82.71m²

Purple International Real Estate

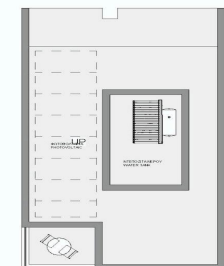
TYPE AM
TOTAL BUILT: 132.94m²
TOTAL COVERED: 82.71m²



GROUND FLOOR BUILT: 68.18m²



FIRST FLOOR BUILT: 64.76m²



ROOF COVERAGE: 82.71m²

Purple International Real Estate