

## 1 Bedroom Apartment for Sale in Limassol - Zakaki

A new ultra-contemporary gated community consisting of six luxurious condos nestled in one of the most prestigious areas in Limassol. Each condo boasts ample living and dining spaces that are perfect for family gatherings and those intimate special moments. Floor to ceiling windows that streamingly flow out onto large verandas, ideal for a breath of fresh air and relaxation. Beautifully built-in kitchens made by European brands with carefully thought out layouts perfectly designed for food preparation and entertainment. Each condo enjoys panoramic views of landscaped green gardens and a lavish inviting swimming pool. This astonishing establishment provides a fully equipped gym and a spaci...



### Property Info

Covered Area	<b>64</b>
Covered Veranda	<b>13</b>
Floor Number	<b>3</b>
Total Number of Floors	<b>4</b>
Energy Efficiency	<b>A</b>

### Plot / Area Info

Pool	<b>Common, Yes</b>
Parking	<b>Covered, Yes</b>

### Additional info

Reference Number	<b>4682</b>
Property type	<b>Apartment</b>
Condition	<b>Under Construction</b>
Bathrooms	<b>1</b>

### Amenities

- Parking

### Location

**Location:** Limassol - Zakaki

Region: **Limassol**

Coordinates: **34.651143985419 / 32.999893426895**

## Price: €316 000 + VAT

VAT for this property is **€15,800** or **€60,040**. VAT usually is 19%. If it is your first purchase of property, you can have VAT reduced to 5% for the first 150sq.m. of the property.

VAT	<b>Excluded</b>	Title transfer fee	<b>None</b>	Common expenses	<b>None</b>
		Price per SQM	<b>€4 938.00/m<sup>2</sup></b>		

## Representative: RealDeal Estates

Registration number	<b>1311</b>	Email	<b>info@realdeal.cy</b>
License number	<b>347/E</b>	Legal name	<b>Esperia Estates (Limassol-Paphos) Limited</b>
Phone: <b>+35725255505, +35794001333</b>			

## Price change history

€316 000 on May 13, 2025



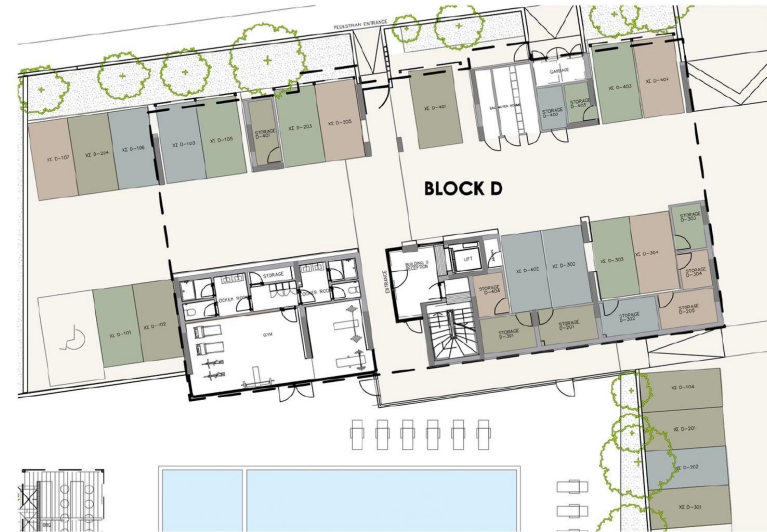




• master plan



ground floor



3rd floor

UNIT N°	TOTAL AREA M <sup>2</sup>
301	134.03
302	113.42
303	110.22
304	131.33

