

3 Bedroom Apartment for Sale in Limassol - Panthea

Elegant 1- and 2-Bedroom Apartments in Panthea, Limassol

Discover a contemporary residential development in the sought-after area of Panthea, Limassol. These 1- and 2-bedroom apartments are designed with a focus on modern aesthetics and high-end specifications, offering a superior standard of living.

Property Details

- * Apartment Types: 1-bedroom and 2-bedroom units
- * Location: Panthea, Limassol
- * Design: Stylish architecture with spacious layouts and premium finishes

Key Features

- * Underfloor heating (full installation)
- * Photovoltaic system for energy efficiency
- * Concealed A/C unit in the living room (full installation)
- * ...

Property Info

Covered Area	141
Covered Veranda	34
Floor Number	1
Total Number of Floors	3
Energy Efficiency	A

Plot / Area Info

Parking **Yes**

Additional info

Reference Number	236960
Property type	Apartment
Construction Year	2027
Bathrooms	2

Amenities

- Elevator

Location

Location: Limassol - Panthea Region: **Limassol**

Price: €410 000 + VAT

VAT for this property is **€20,500** or **€77,900**. VAT usually is 19%. If it is your first purchase of property, you can have VAT reduced to 5% for the first 150sq.m. of the property.

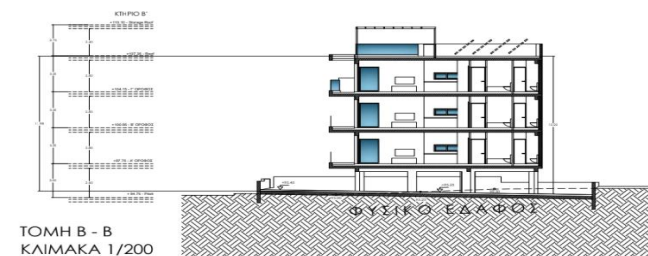
VAT	Excluded	Title transfer fee	~€13 000.00	Common expenses	None
		Price per SQM	€2 908.00/m²		

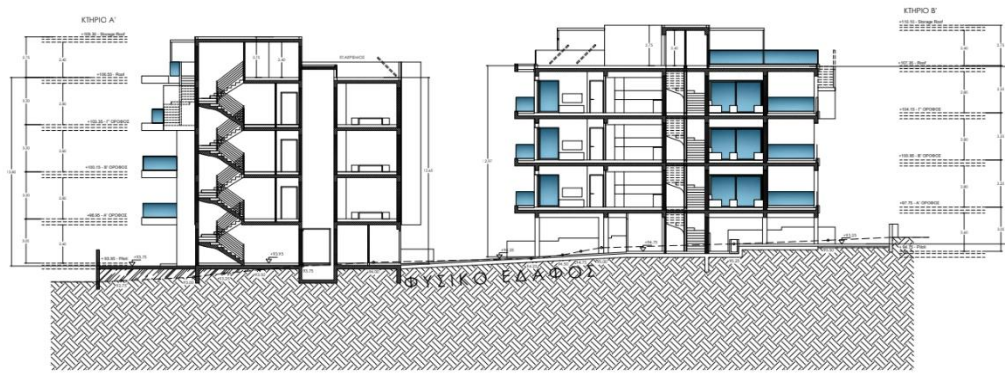
Representative: MySpace

Registration number	229/E	Email	myspace.cyprus@gmail.com
License number	1047	Legal name	MYSPACE Real Estate/ A.SP.Thinkrealty ltd
Phone: +35795129336, +35799409010			

Price change history

€410 000 on May 13, 2025





ΤΟΜΗ Α - Α
ΚΑΙΜΑΚΑ 1/200