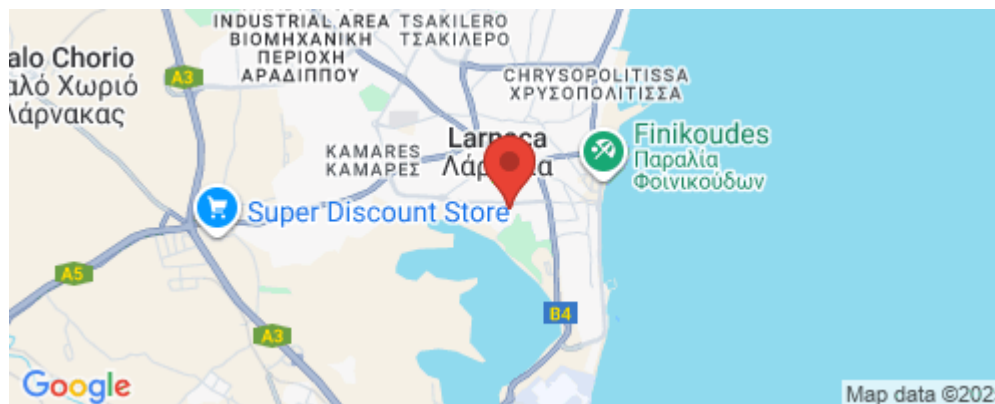


## 3 Bedroom Apartment for Sale in Faneromeni, Larnaca District

Listing is for a Three Bedroom Penthouse Apartment with Roof Terrace located on the Third Floor.



BENEFIT FROM PRELAUNCH OFFERS! soon to be released in Faneromeni, one of the most Elite & Prestigious areas in Larnaca!

Faneromeni is known to offer its residents an affluent lifestyle where tranquility and convenience are guaranteed.

The Property will be another luxurious project in this area, with a very adequate location near public services and at just 500 meters from Larnaca Salt Lake and 200 meters from the splendid Patticheio Park, the biggest Park in Larnaca!

- 2 & 3 Bedroom Apartments
- Penthouses with Roof Terraces
- One of th...

Property Info		Plot / Area Info		Additional info	
Covered Area	<b>105</b>	Parking	<b>Covered, Yes</b>	Reference Number	<b>13725</b>
Air Conditioning	<b>All rooms, Yes</b>			Property type	<b>Apartment</b>
				Condition	<b>Brand New</b>
				Bathrooms	<b>3</b>

**Location**

- Elevator

**Location:** Faneromeni

Region: **Larnaca**

Coordinates: **34.910065646897 / 33.622426018356**

## Price: €475 000 + VAT

VAT for this property is **€23,750** or **€90,250**. VAT usually is 19%. If it is your first purchase of property, you can have VAT reduced to 5% for the first 150sq.m. of the property.

VAT	<b>Excluded</b>	Title transfer fee	<b>None</b>	Common expenses	<b>None</b>
		Price per SQM	<b>€4 524.00/m²</b>		

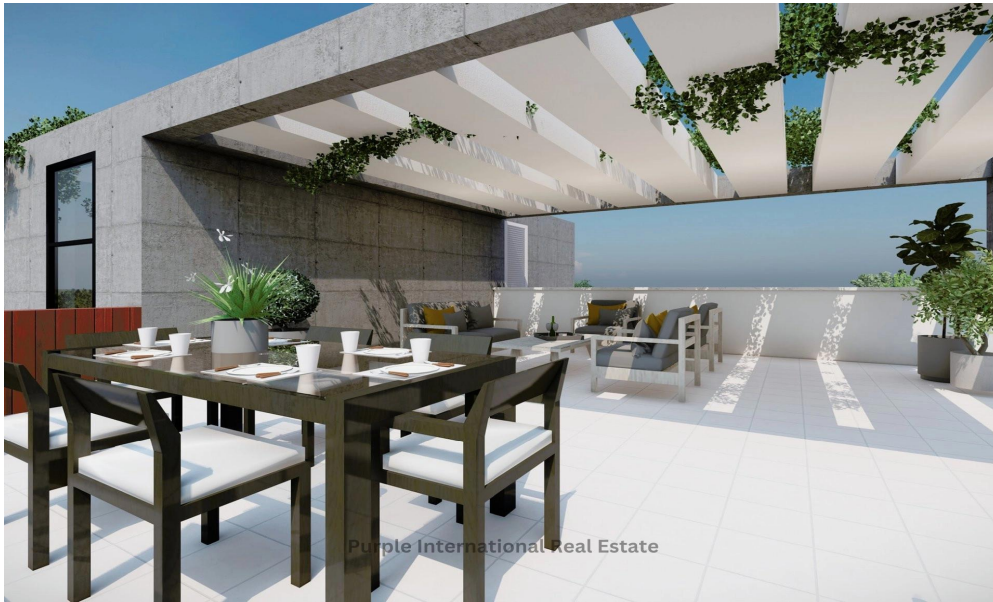
## Representative: Purple International Real Estate

Registration number	<b>1052</b>	Email	<b>info@purpleinternational.eu</b>
License number	<b>512/E</b>	Legal name	<b>A.A. Purple Real Estate Ltd</b>
Phone: +35723811058			

## Price change history

€475 000 on May 28, 2025





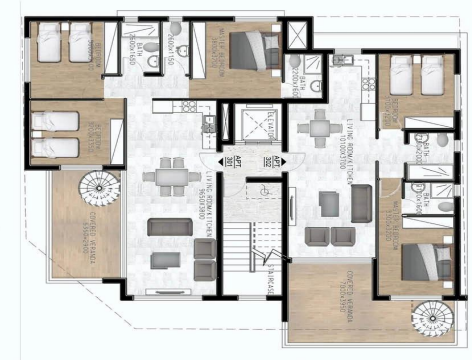




## 3<sup>RD</sup> FLOOR



**301** ▶  
3 Bedrooms  
3 Bathrooms  
105 SQM Internal Area  
15 SQM Covered Veranda  
68 SQM Uncovered Terrace



◀ **302**  
2 Bedrooms  
2 Bathrooms  
81 SQM Internal Area  
19.5 SQM Covered Veranda  
57 SQM Uncovered Terrace

Purple International Real Estate

## R<sup>OOF</sup> FLOOR



**301** ▶  
68 SQM Uncovered Terrace



◀ **302**  
57 SQM Uncovered Terrace

Purple International Real Estate