

## 2 Bedroom Apartment for Sale in Livadia Larnakas, Larnaca District

Modern 2-bedroom penthouse located on the top floor of a boutique development, featuring a large open veranda ideal for outdoor dining and relaxation. Perfectly positioned just a few minutes from the upcoming Larnaca New Marina & Port – the city’s largest and most exciting development.



- Top Floor Apartment
- 2 Bedrooms
- Large Open Veranda
- Covered Private Parking
- Few Minutes from New Marina & Port
- Close to Shops, Restaurants & Amenities

Enjoy elevated living in one of Larnaca’s most promising and fast-growing areas.

### Property Info

Covered Area	<b>103</b>
Covered Veranda	<b>16</b>
Uncovered Veranda	<b>58</b>
Floor Number	<b>2</b>
Total Number of Floors	<b>2</b>
Energy Efficiency	<b>A</b>

### Plot / Area Info

Parking **Covered, Yes**

### Additional info

Reference Number	<b>6687</b>
Property type	<b>Apartment</b>
Condition	<b>Under Construction</b>
Bathrooms	<b>2</b>

**Location**

- Parking

**Location:** Livadia Larnakas

Region: **Larnaca**

Coordinates: **34.943670169162 / 33.62064242935**

## Price: €317 000 + VAT

VAT for this property is **€15,850** or **€60,230**. VAT usually is 19%. If it is your first purchase of property, you can have VAT reduced to 5% for the first 150sq.m. of the property.

VAT	<b>Excluded</b>	Title transfer fee	<b>None</b>	Common expenses	<b>None</b>
		Price per SQM	<b>€3 078.00/m²</b>		

## Representative: RealDeal Estates

Registration number	<b>1311</b>	Email	<b>info@realdeal.cy</b>
License number	<b>347/E</b>	Legal name	<b>Esperia Estates (Limassol-Paphos) Limited</b>
Phone: <b>+35725255505, +35794001333</b>			

## Price change history

€317 000 on Jun 11, 2025

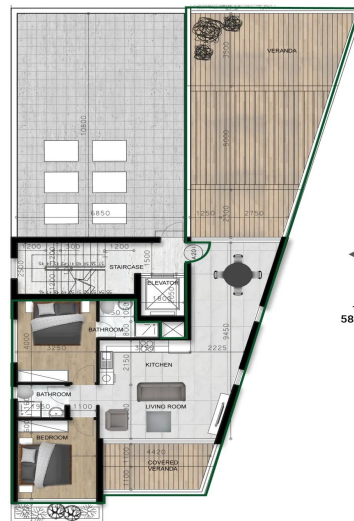








## BLOCK A 2<sup>ND</sup> FLOOR



◀ **A201**  
2 Bedrooms  
2 Bathrooms  
87 SQM Internal Area  
16 SQM Covered Veranda  
58.5 SQM Uncovered Veranda